

QNAP Mobile NAS

User Manual

(Version: 1.2)

This manual is applicable to the following Mobile NAS models: QG-103N

© 2014 QNAP Systems, Inc. All Rights Reserved.

Table of Contents

1.	7
1.1	8
1.2	9
1.2.1 QGenie	9
1.2.2	11
1.2.3	12
1.3	15
1.3.1	15
1.3.2 QGenie	16
1.3.3 /	18
1.3.4 Android	19
1.3.5 iOS	20
1.3.6 LAN	22
1.4 PC	23
1.4.1 Qfinder	24
1.4.2 PC QGenie	27
1.5 Qfile QGenie /	29
1.5.1 Qfile	30
1.5.2	31
1.5.3 QGenie	32
1.5.4 ()	43

1.5.5 Accesso e gestione dei file (Avanzate).....	47
1.5.6 QGenie /QGenie &	50
1.5.7 Qfile	52
1.6 Qfinder QGenie /	58
1.6.1	59
1.6.2 () QGenie	60
1.6.3 QGenie	63
1.7 QGenie /	64
1.7.1	65
1.7.2 QGenie	70
1.7.3 QGenie	72
1.8 myQNAPcloud	73
1.9	76
1.9.1	76
1.9.2	77
1.9.3	77
1.10	77
1.11	80
2.	81
2.1	81
2.1.1 QGenie가	82
2.1.2	82

2.1.3 QGenie	가	82
2.1.4	가	82
2.1.5		82
2.1.6		82
2.1.7 QGenie가		83
2.2		83
2.2.1	가	83
2.3		83
2.3.1	가	83
2.3.2		83
2.3.3	가	84
2.3.4		84
2.3.5	LAN	84
2.4		84
2.4.1 QGenie가		84
2.5	LAN	84
2.5.1	/ LAN , 가	85
2.5.2	(SSID) "QG"	85
2.5.3	LAN	85
2.6		85
2.6.1		85

2.7		86
2.7.1	(SSID)	86
2.7.2	QGenie	86
2.8		86
2.8.1	/	86
2.8.1.1		86
2.8.1.2		87
2.8.1.3	Qfile	87
2.8.1.4	Qfile	87
2.8.1.5	(iOS)	87
2.8.2		87
2.8.2.1		87
2.8.2.2	(SD, USB)	87
2.8.2.3	(SD, USB)	87
2.9	USB	88
2.9.1	QGenie USB	88
2.9.2		88
2.9.3	LAN PC	88
2.10	Qfile	88
2.10.1	Qfile	88
2.10.2	Qfile	88

2.10.3 Qfile	89
2.10.4 Qfile	?.....	89
2.10.5 Qfile	QGenie	89
2.11 myQNAPcloud	89
2.11.1 QGenie	myQNAPcloud	89
2.12 가	90
2.12.1	90
2.12.2 QGenie	LAN	90
2.12.2.1	?.....	90
2.12.2.2 QGenie	?.....	90
2.12.2.3	90
2.13	90
2.13.1 QGenie	90
2.13.2 QGenie가	91
2.14 USB	91
2.14.1 USB	QGenie	91
3.	91
4. GNU	92

1.

QGenie

QGenie가

PC

PC Mac

Qfile

QGenie /

Qfile

QGenie

QGenie

Qfinder

QGenie /

PC Qsync

QGenie

QGenie /

QGenie

QGenie

myQNAPcloud

myQNAPcloud

QGenie

QGenie

QGenie

QGenie

1.1



가 가 . 가 , 가 ,

QNAP

QNAP

(SD ,USB)
가

가

1.2

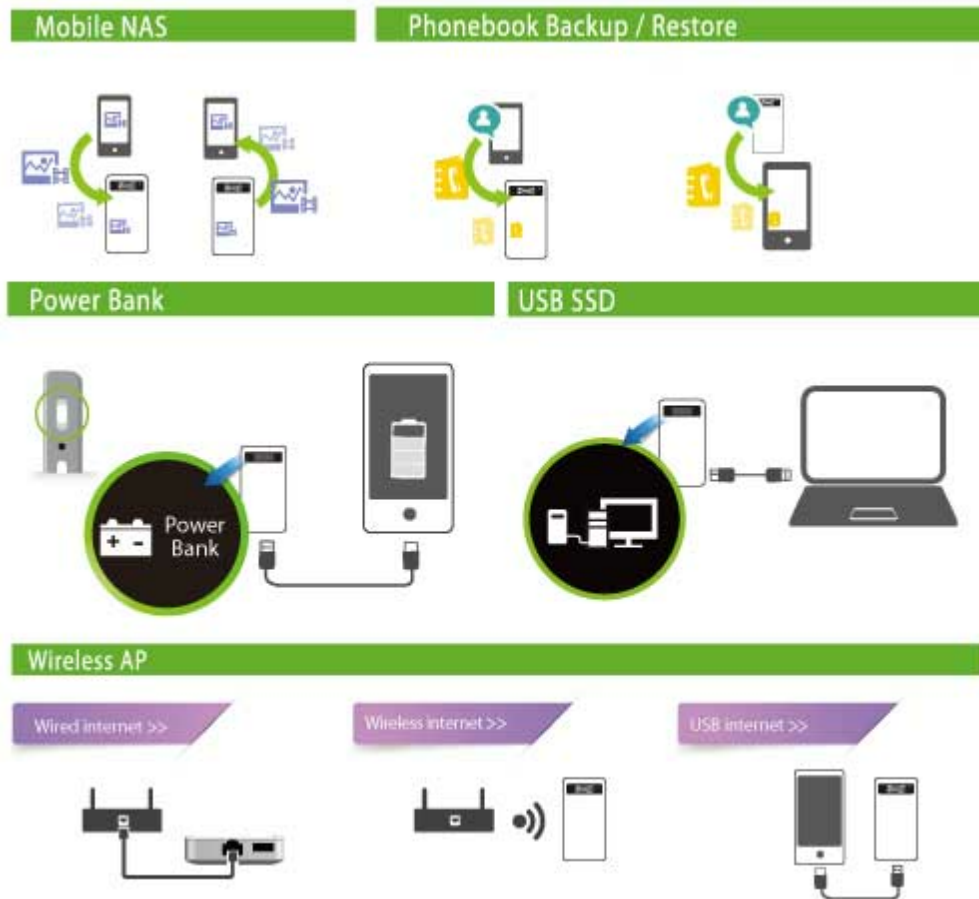
QGenie

QGenie

QGenie . LED . OLED

1.2.1 QGenie

QGenie , NAS . QGenie . QGenie . USB
Android iOS
3.0 QGenie PC SSD



NAS

- "Qfile" 2 QGenie NAS
- 1. QGenie
- 2. QGenie

- QGenie
- PC Qsync QNAP Turbo NAS

/ Wi-Fi

- 20
- 50m/164
- Wi-Fi ()
- 3G/4G USB Wi-Fi ()
- Android iOS ()

- 7가 가
-
-
-
-
-
-
- SDP/DCP

- QGenie가 iPad
- 1.5A/5V
- 90%

- QGenie가 PC QGenie

- QGenie가 myQNAPcloud QGenie

- iOS Android / 4가 ()

- QGenie
- Qfile (mp4, mkv, rmvb)

USB SSD

- USB 3.0 PC QGenie SSD
- 120MB/s 40MB/s
- QGenie TV

- 128GB SDXC SD (가)

- 2TB USB (_____ 가)

OLED

1.2.2

Android
Android 2.3

Android 4.0 ()

Windows PC
Windows XP (3)

Windows Vista (2)

Windows 7 (1))

Windows 8

iOS
iOS 5.0 ()

Mac
Mac OS X 10.6 ()

가 SD

SD

SDHC

SDXC

microSD (가)

microSDHC (가)

microSDXC (가)

가 USB

USB

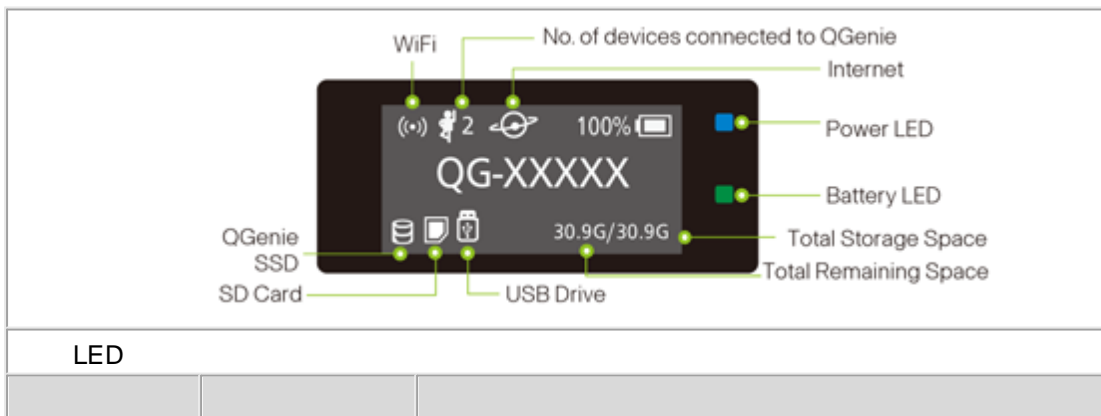
USB

()

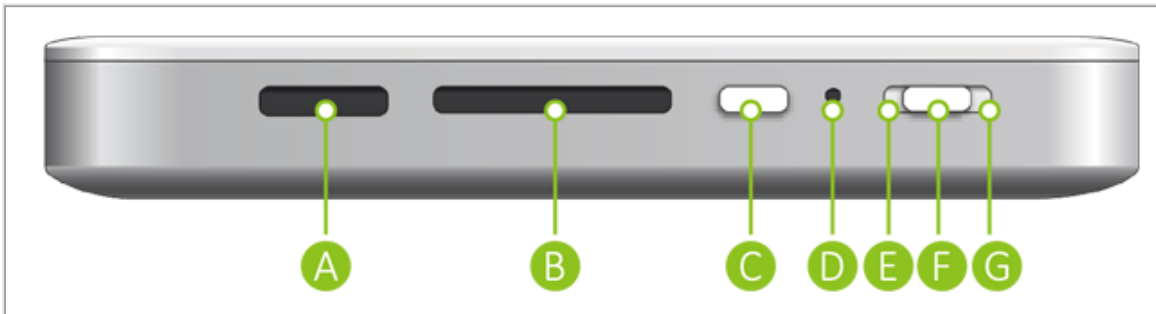
1.2.3



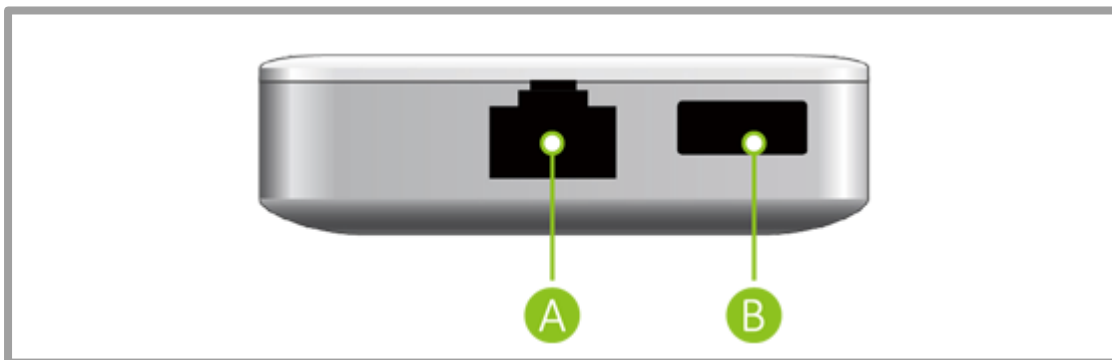
OLED



		Wi-Fi
LED		



/		
A		PC/ USB
B		SD
C		
D	X	
E	OFF	
F		()
G		Wi-Fi



A	
B	USB 3.0


SD / USB QGenie가

SD
SD



SD 가
SD

QGenie OLED
가 SD

SD

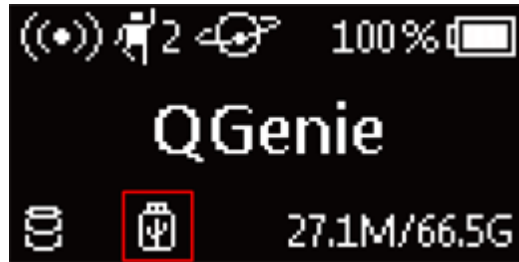


USB
USB

USB



USB 가 , QGenie OLED USB USB



1.3

QGenie

QGenie

USB

USB

QGenie

Android

Google Play

Qfile

iOS

App Store

Qfile

LAN

QGenie

1.3.1

1. QGenie(QG-103N)

- 2. USB 3.0
- 3. 가

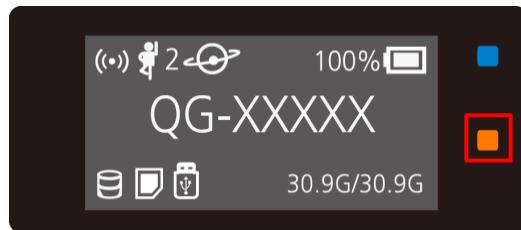
1.3.2 QGenie

USB AC

- 1. QGenie "USB USB AC PC/ " . AC



- 2. LED



- 3. QGenie가 OLED 100%



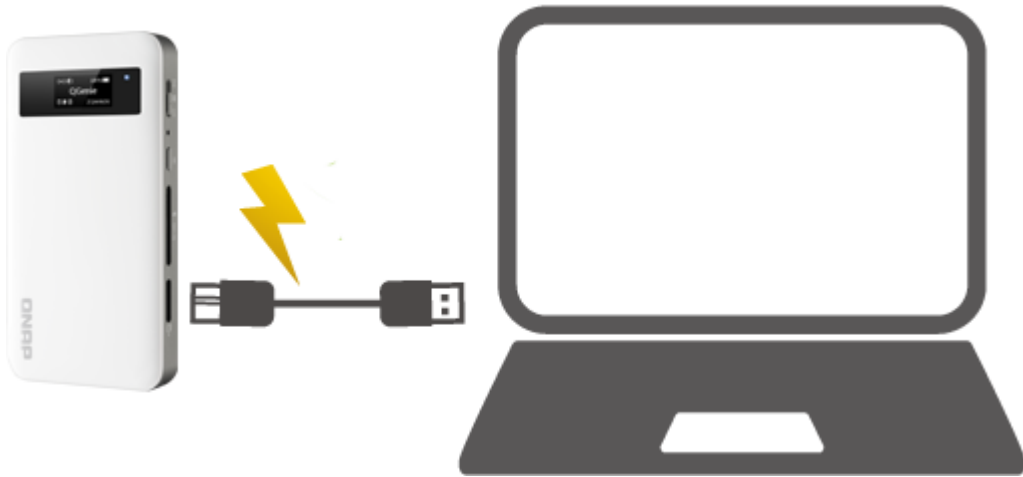
- 4. USB AC QGenie
- 5. 3

i

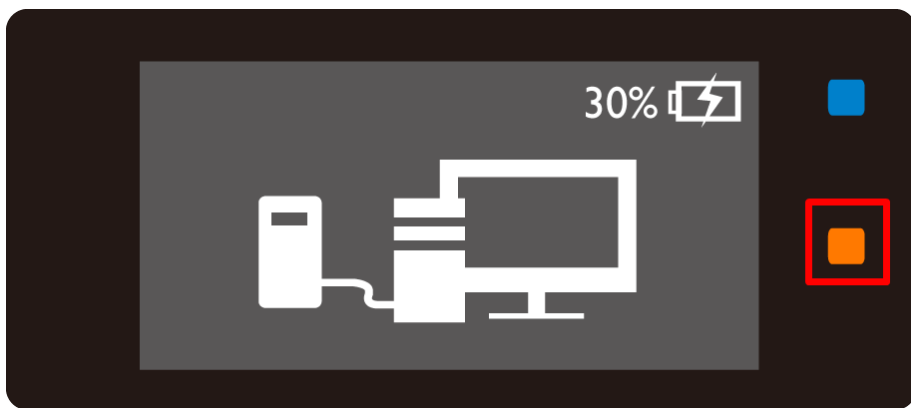
- 가
- 10 °C ~ 35 °C(50 °F ~ 95 °F)
- (,) OLED 가
LED가 , QGenie가
USB

PC

- 1. USB QGenie



- 2. LED



- 3. QGenie가 OLED 100%



4. USB QGenie

i

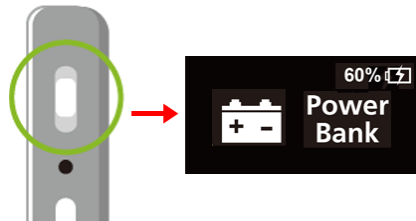
- PC가 QGenie
- PC QGenie가 USB
- 가
- - 10 °C ~ 35 °C(50 °F ~ 95 °F)
- (,) OLED 가
LED가 , PC

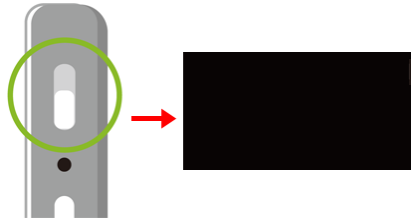
1.3.3 /

QGenie Wi-Fi : "QG-XXXXXX"가



QGenie : "Power Bank()"가



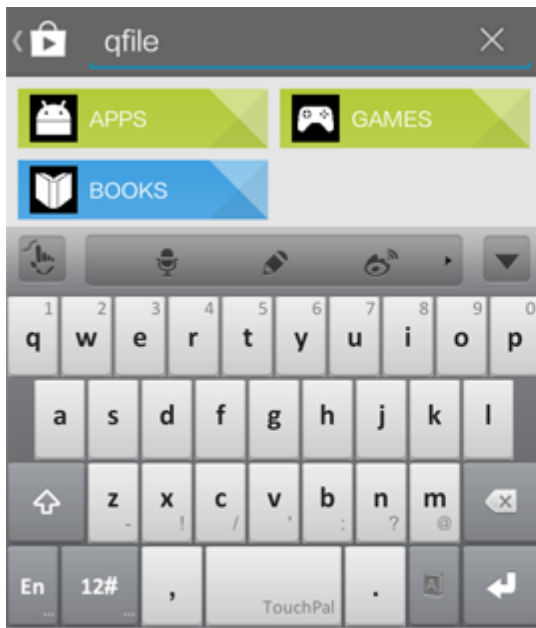


1.3.4 Android

1. Google Play Store

"Qfile"

QR



Google Play

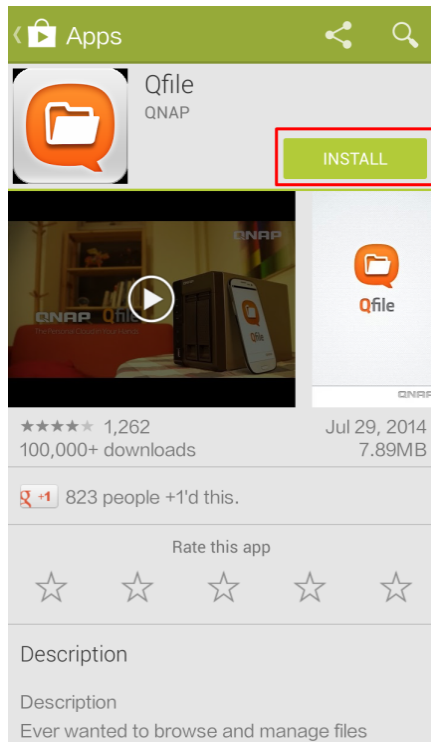


OR

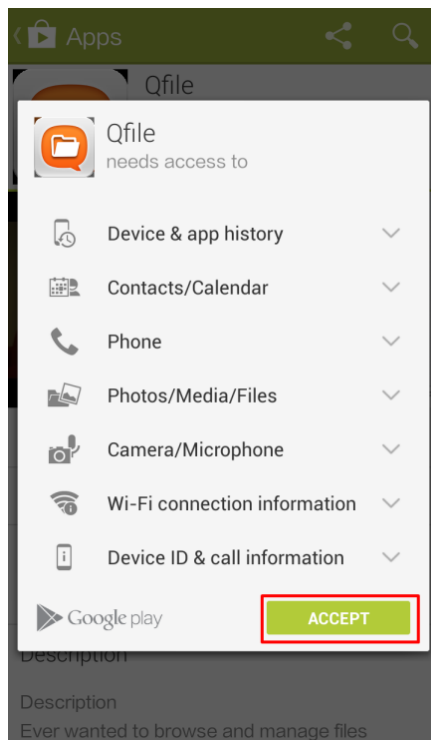
QR Code

2. Qfile

,"INSTALL()"



3. , "ACCEPT()" Qfile .



1.3.5 iOS

1. App Store "Qfile" QR .

qfile

qfile



App Store

OR

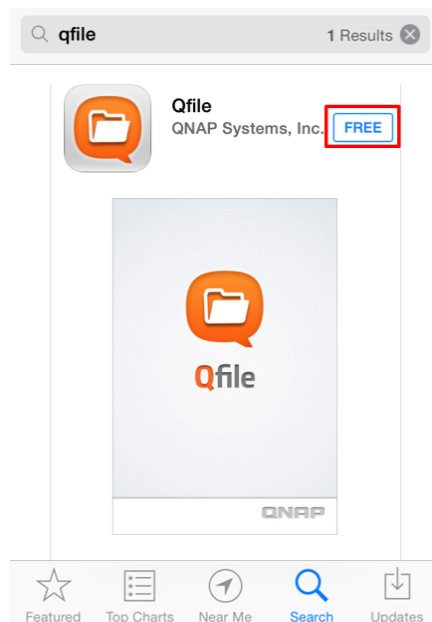
Available on the App Store



QR Code

2. Qfile

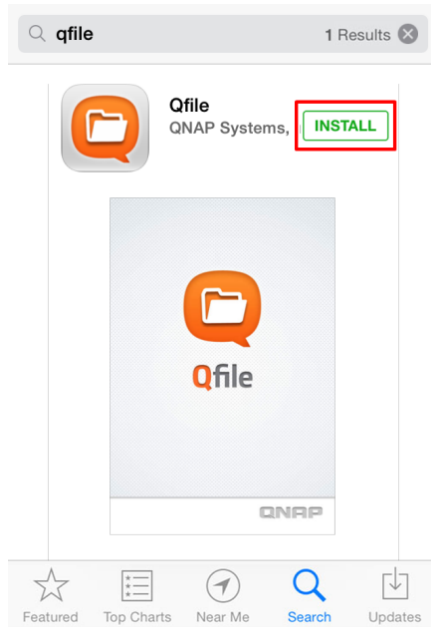
"FREE"



3. "FREE"

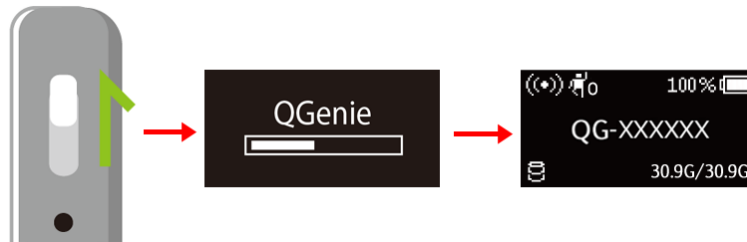
"Qfile"

"INSTALL()"

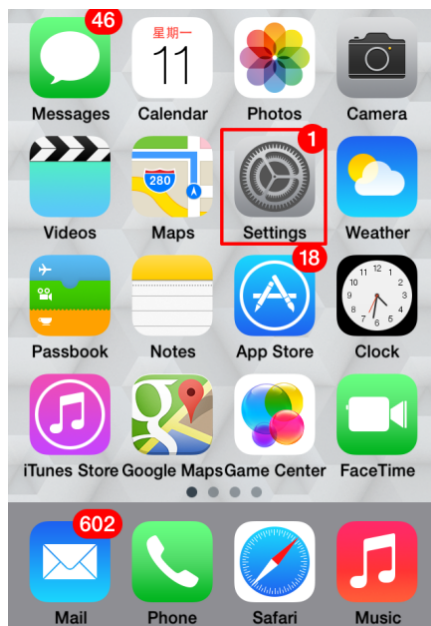


1.3.6 LAN

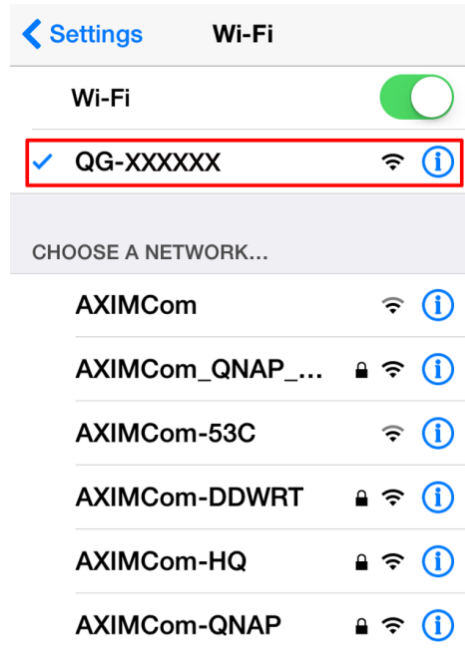
1. QGenie 가



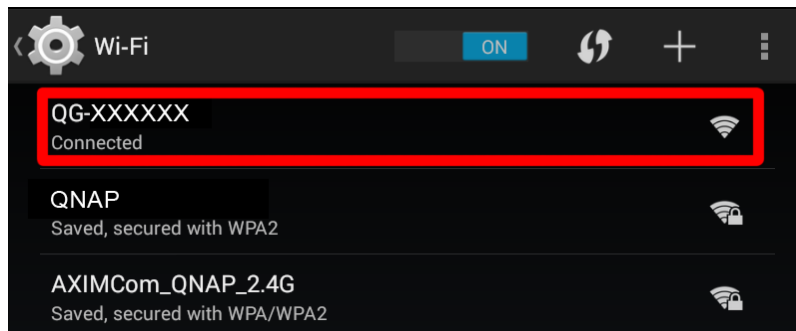
2. "Settings() . (iPhone)




3. QGenie (SSID) QGenie OLED ..



(iOS)



(Android)

						
▪	QGenie	iOS	가	"3G/4G"	.	가 Wi-Fi
	(QGenie) 3G/4G					

1.4 PC

[Qfinder](#)

PC Qfinder

[PC QGenie](#)

PC Mac QGenie

1.4.1 Qfinder

1. <http://www.qnap.com/> Support() Download() Utilities()



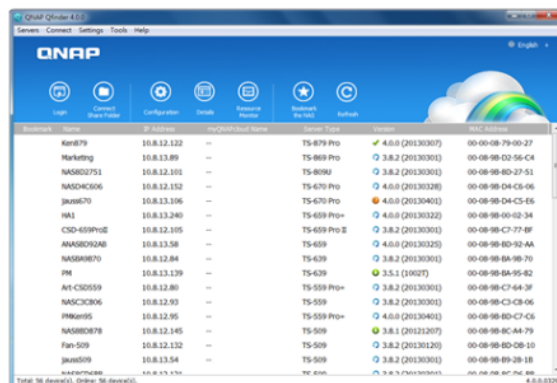
2. Qfinder

Qfinder

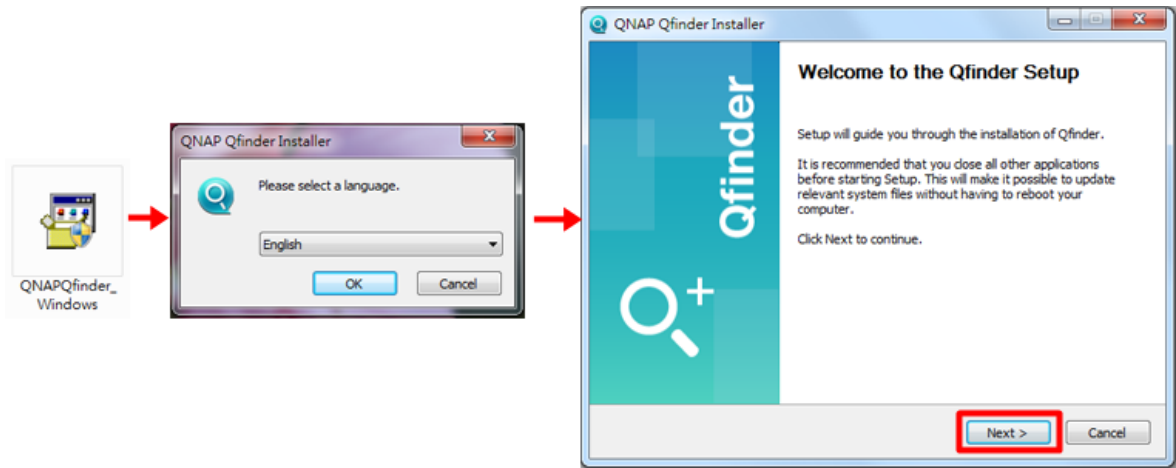


Connect and set up NAS easily

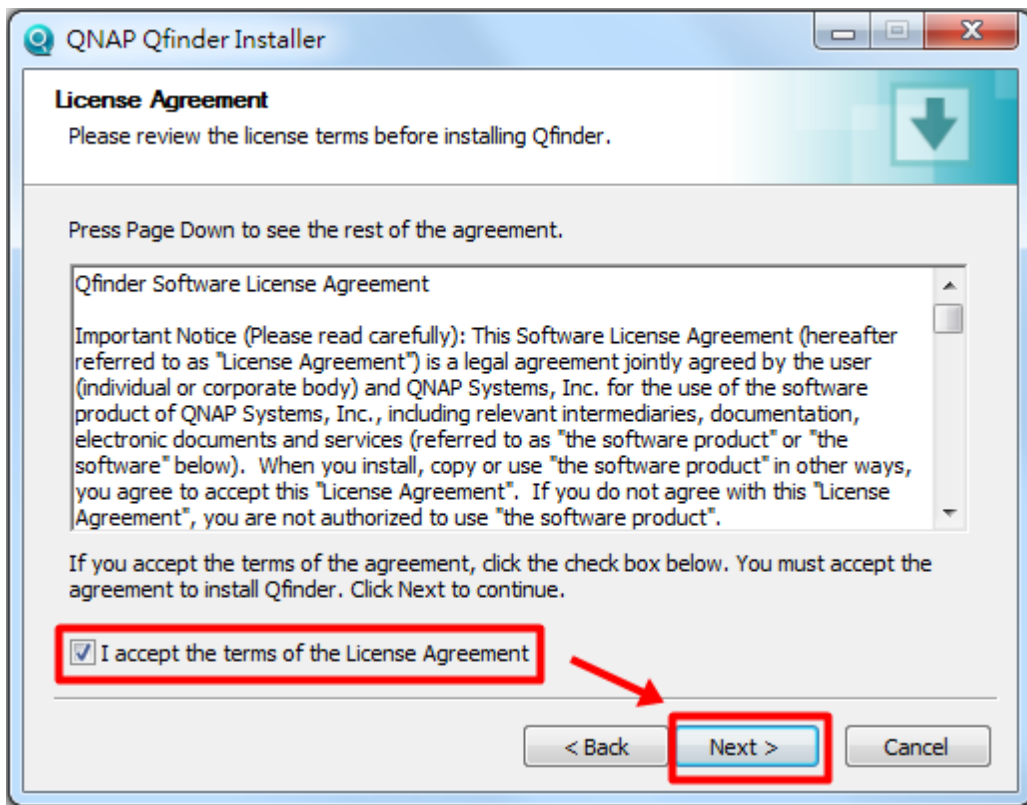
Qfinder is a utility, available for Windows, Mac, and Linux, to quickly find and access the Turbo NAS over the LAN. Install the Finder on your computer, open it, and double click your Turbo NAS name, and the login page is ready for you.



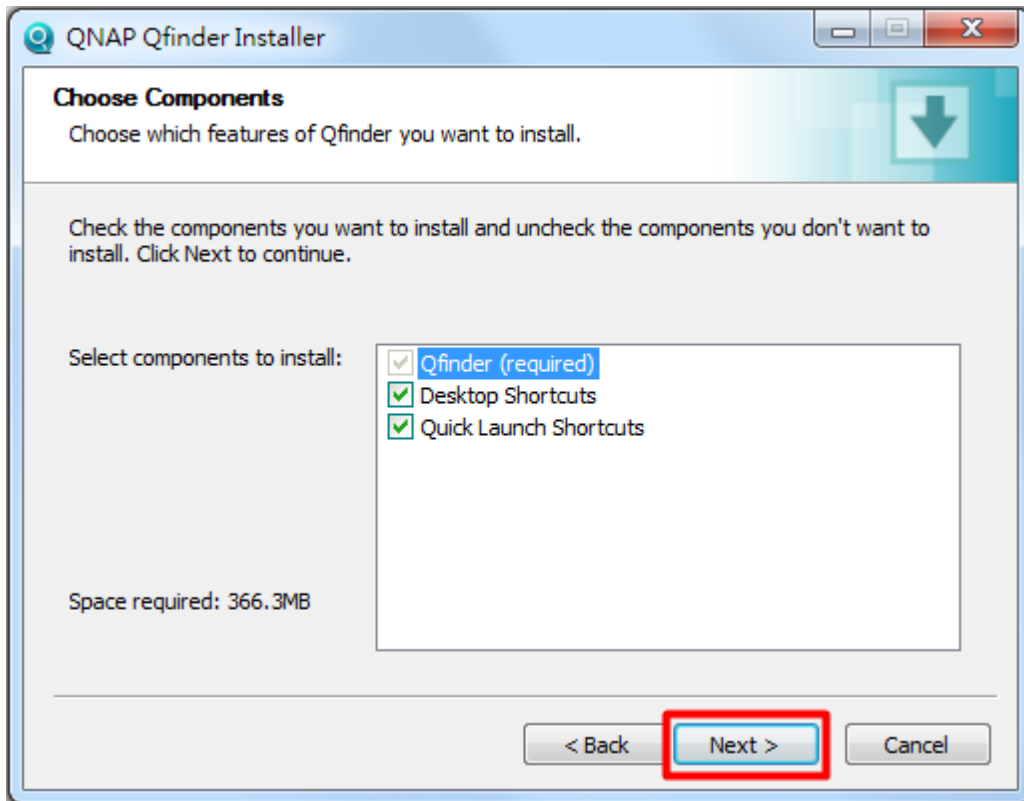
3. Qfinder



4. "I accept the terms of the License Agreement()"
 "Next()"

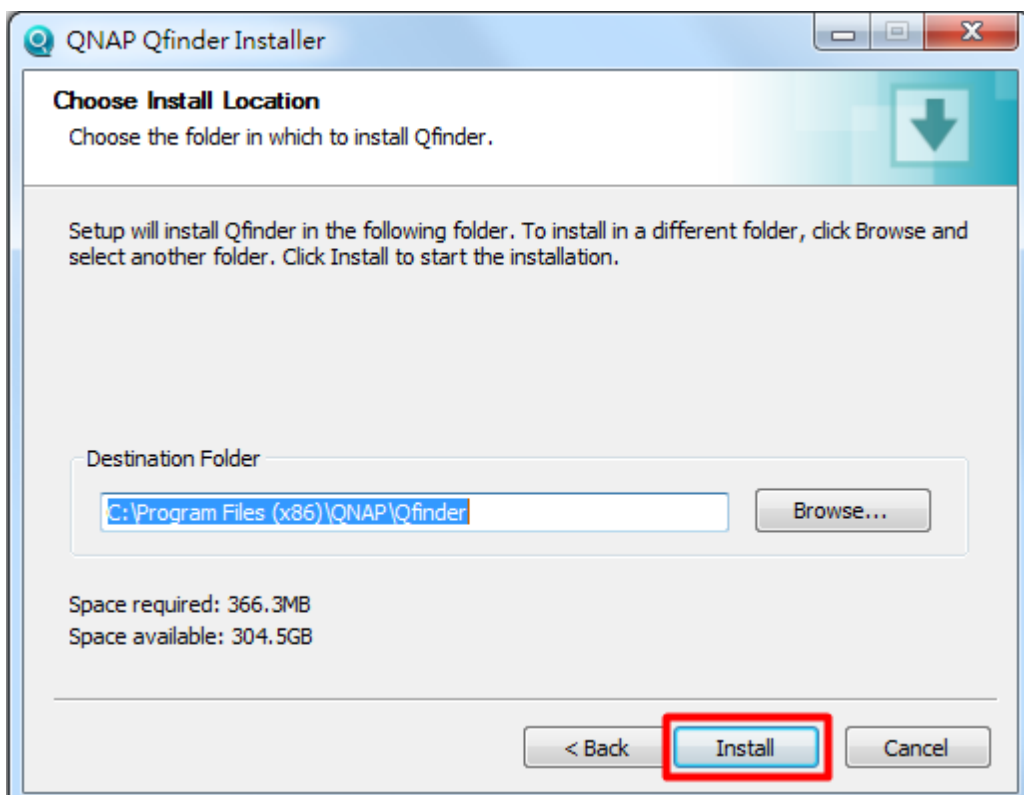


5. "Next()"



6. Qfinder

"Install()"



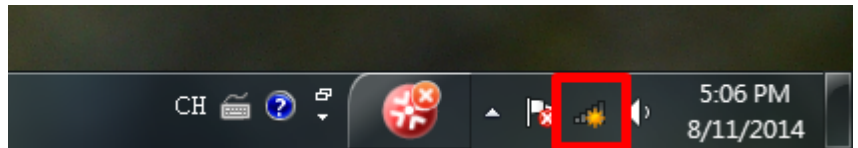
1.4.2 PC QGenie

QGenie Windows

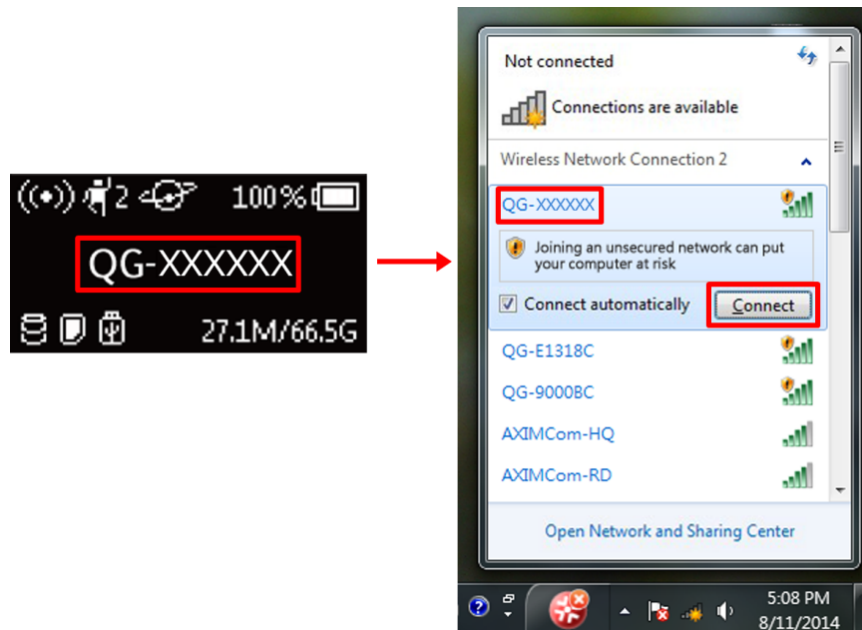
1. QGenie 가

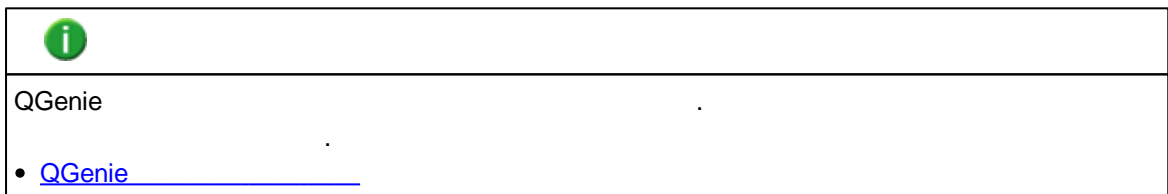


2. 가 (Windows 7).



3. QGenie (SSID) QGenie OLED



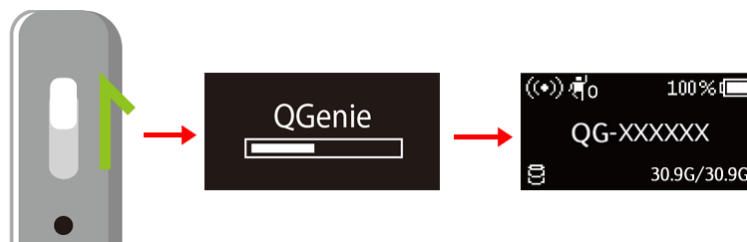


QGenie Mac

1.

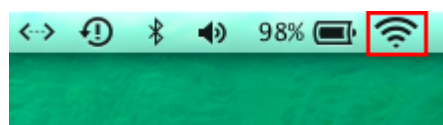
QGenie

가



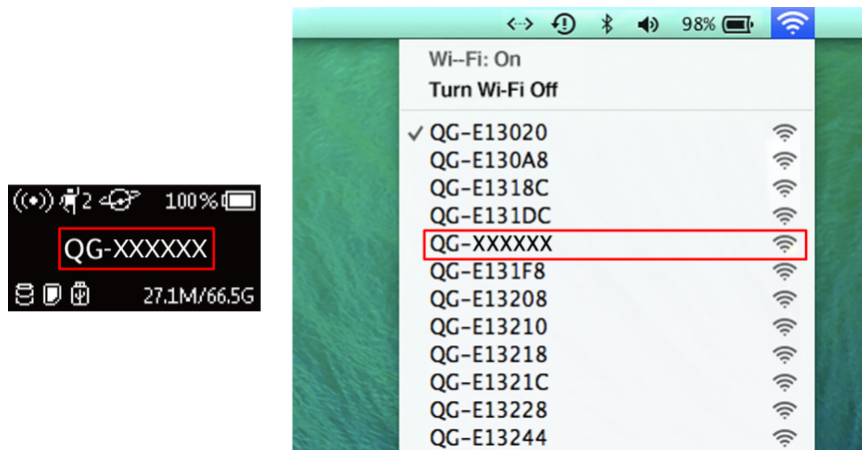
2.

가

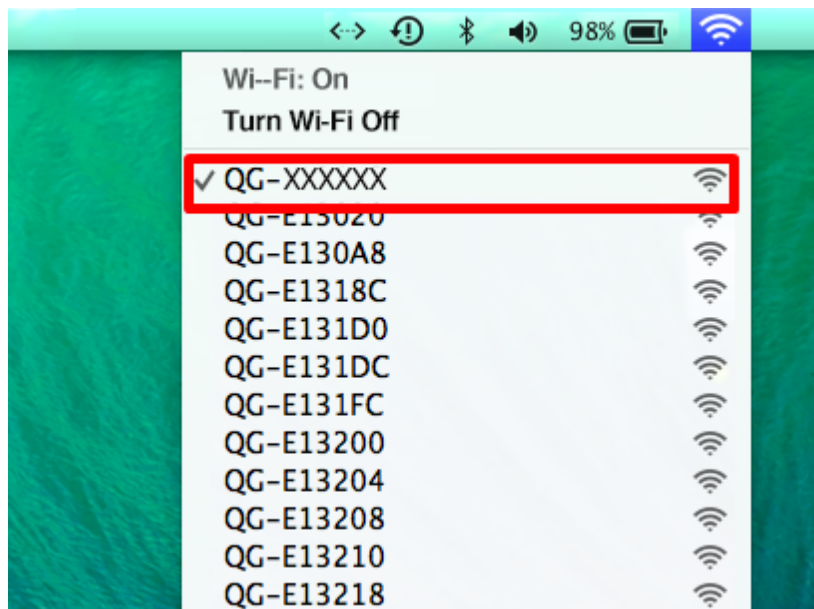


3. QGenie's

(SSID) QGenie's OLED



4. Wi-Fi Mac QGenie



1.5 Qfile QGenie /

Qfile

Qfile QGenie

QGenie Qfile

QGenie

QGenie' : , , , QGenie
QGenie'

()

Qfile QGenie , ,

()

Qfile

QGenie / QGenie &

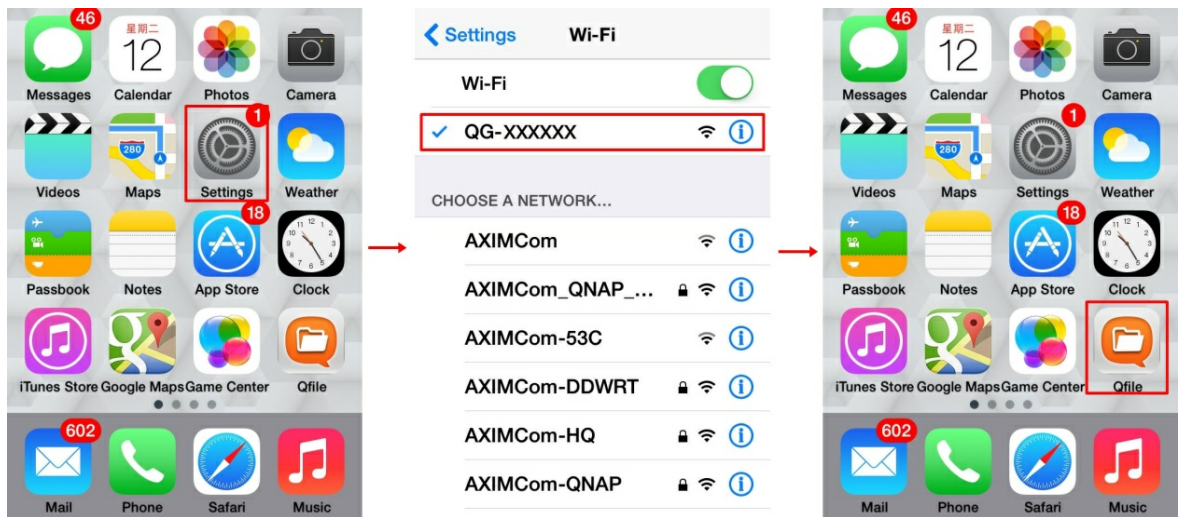
Qfile

Qfile

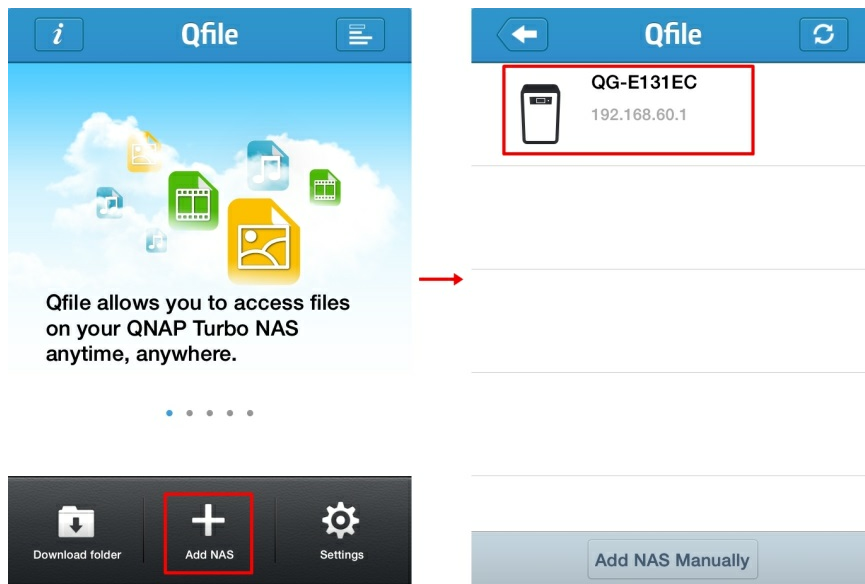
Qfile

1.5.1 Qfile

1. Wi-Fi QGenie , "Qfile"



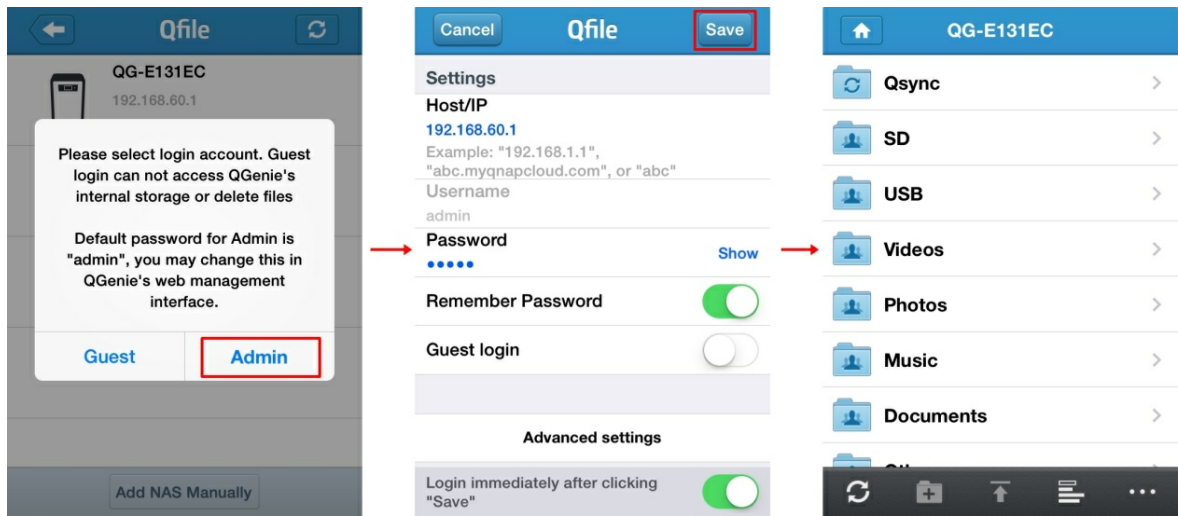
2. , "Add NAS(NAS 가)" QGenie .



3. QGenie

, "Admin()"

QGenie



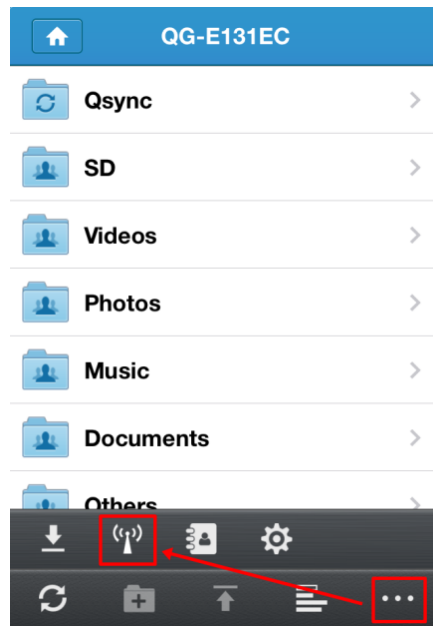
1.5.2

	QGenie
	QGenie
	Qfile

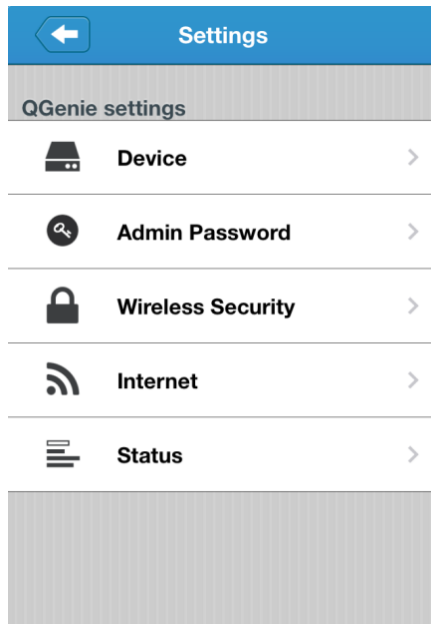
	가
	QGenie
	

1.5.3 QGenie

1. QGenie Wi-Fi QGenie , Qfile "Qfile" QGenie .
2. QGenie , "..." " (Wi-Fi)" () .



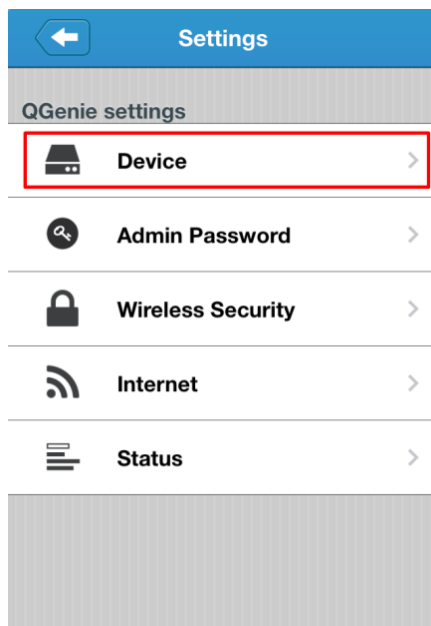
3. QGenie .



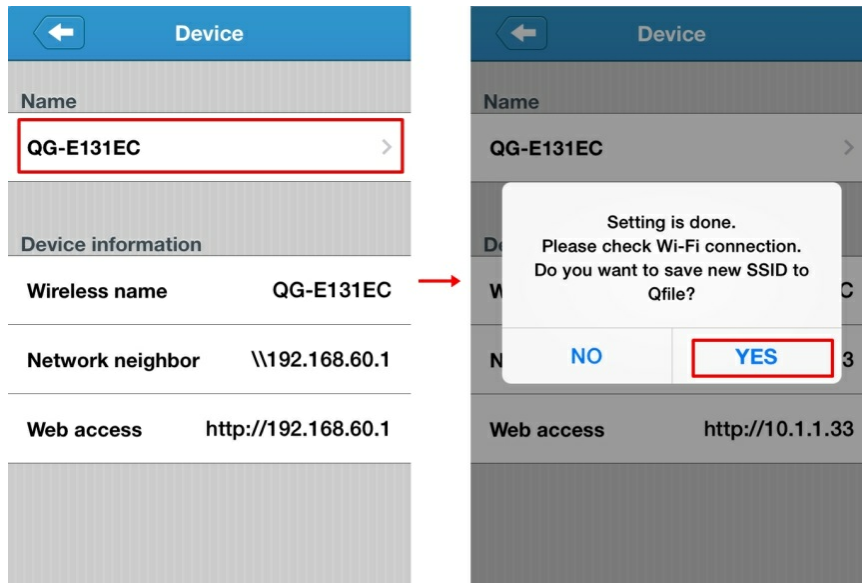
QGenie


QGenie (SSID) Qfile
(iOS).

1. "Device()"



2. "Name()" , "YES()"

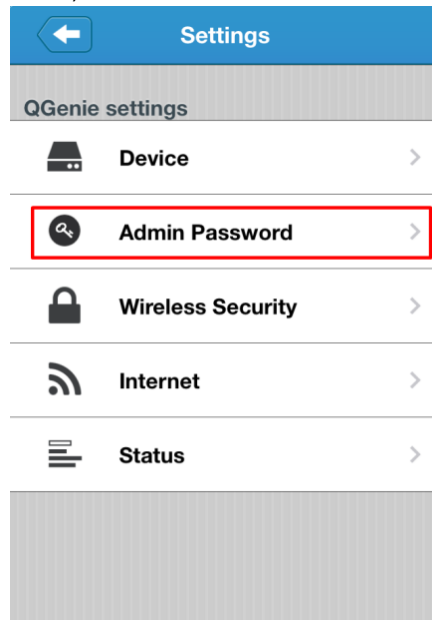


		
QGenie	(SSID)	SSID
, Qfile	.	.

QGenie

QGenie	,	.
--------	---	---

1. "Admin Password()"



2.

3. "Done()"


QGenie

← Admin Password Done

Username admin

Password

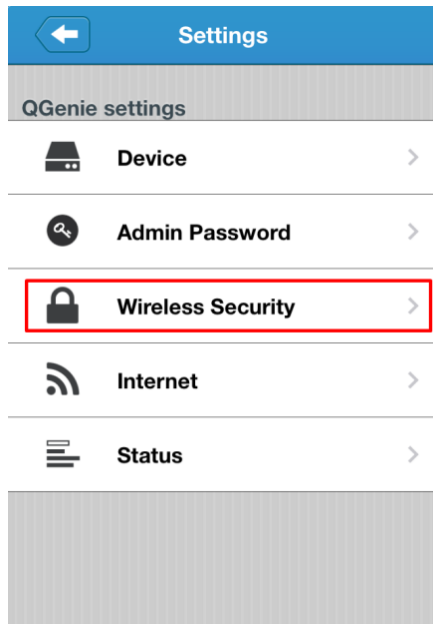
Retype password

 QGenie .

QGenie

, .

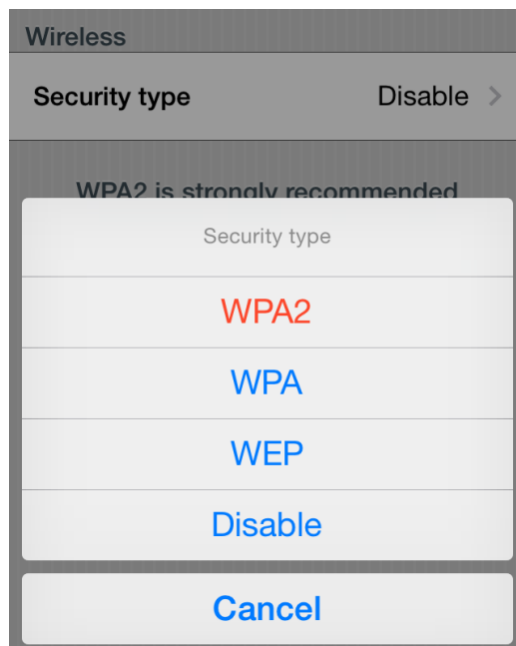
1. "Wireless Security()"



2.

(WEP/WPA/WPA2)

WPA2

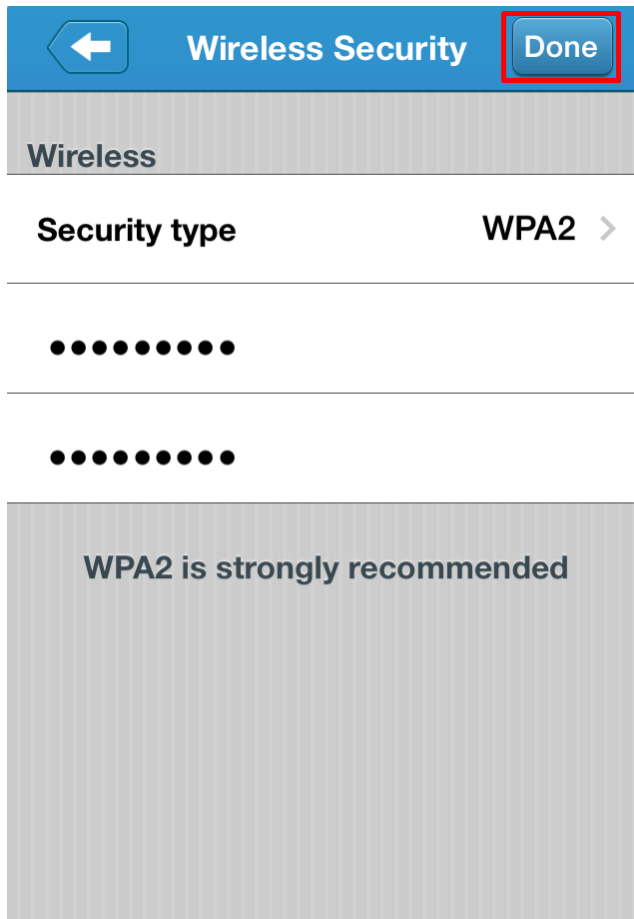



3.

4.

QGenie

LAN

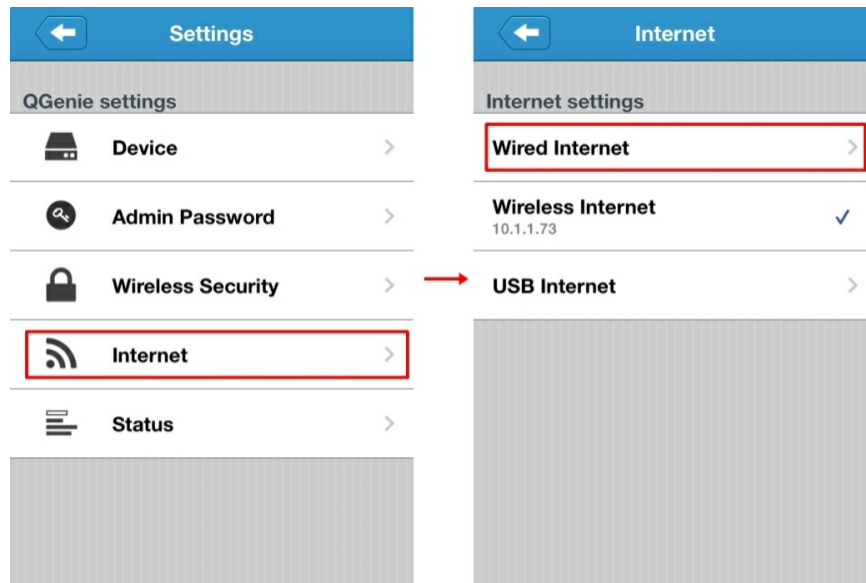


	
• "Disable()"	, LAN 가
• QGenie	, QGenie
• WPA/WPA2	8 ~ 63
• WEP	5 ~ 13

QGenie

- QGenie 3가
1. QGenie
 2. QGenie Wi-Fi
 3. USB QGenie (1) (iPhone/Android) (2) 3G/4G USB

1. "Internet()" "Wired Internet()"

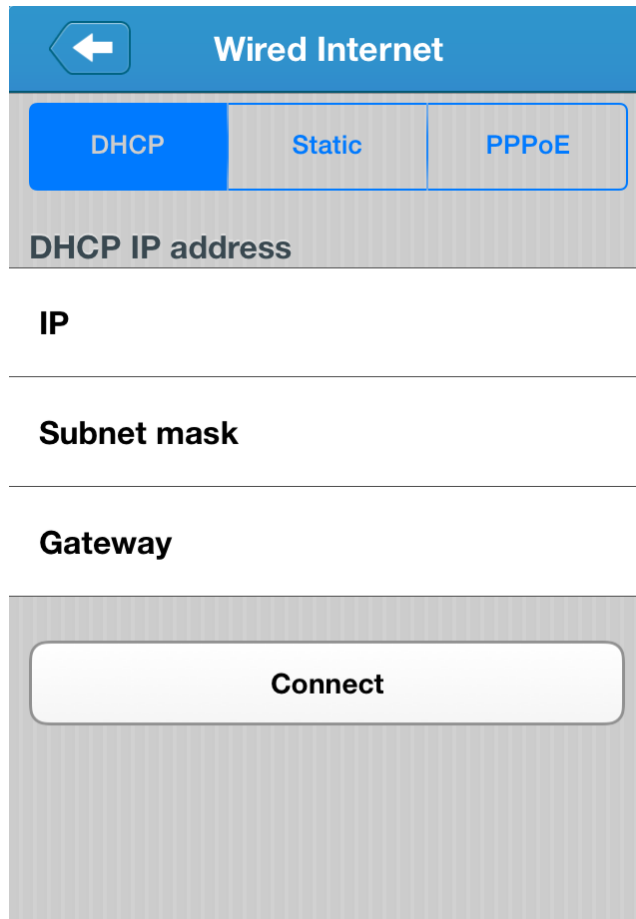


2.

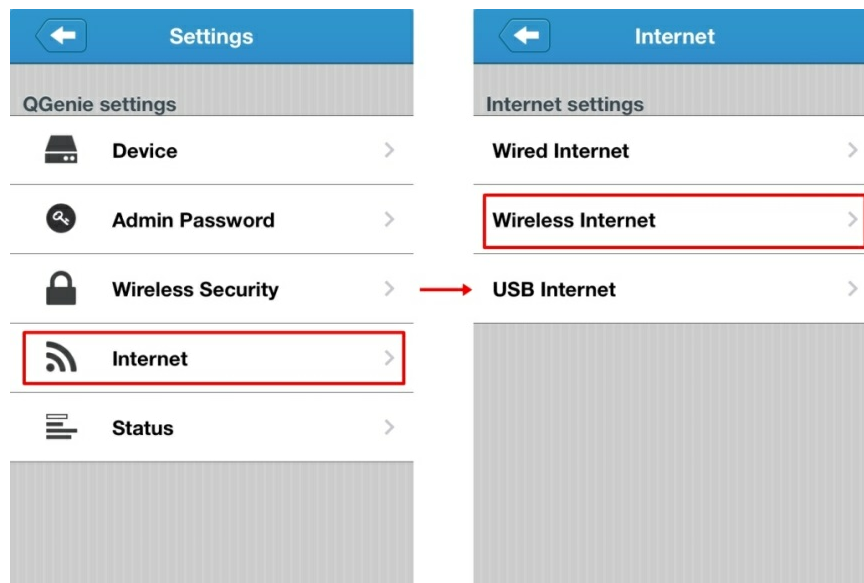
- DHCP: 가 , QGenie
- IP: DHCP , IP
- PPPoE: QGenie ADSL/VDSL , 가

*

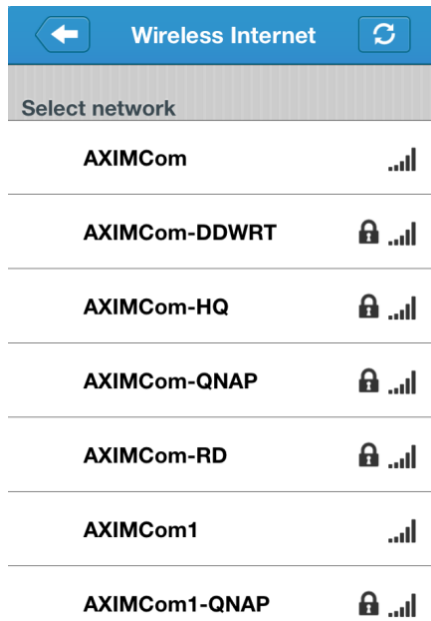
3. "Connect()"



1. "Internet()" "Wireless Internet()" .



2. QGenie가 .

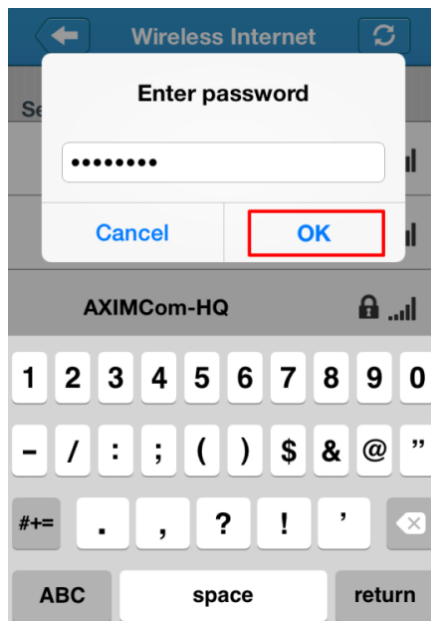


3.

QGenie

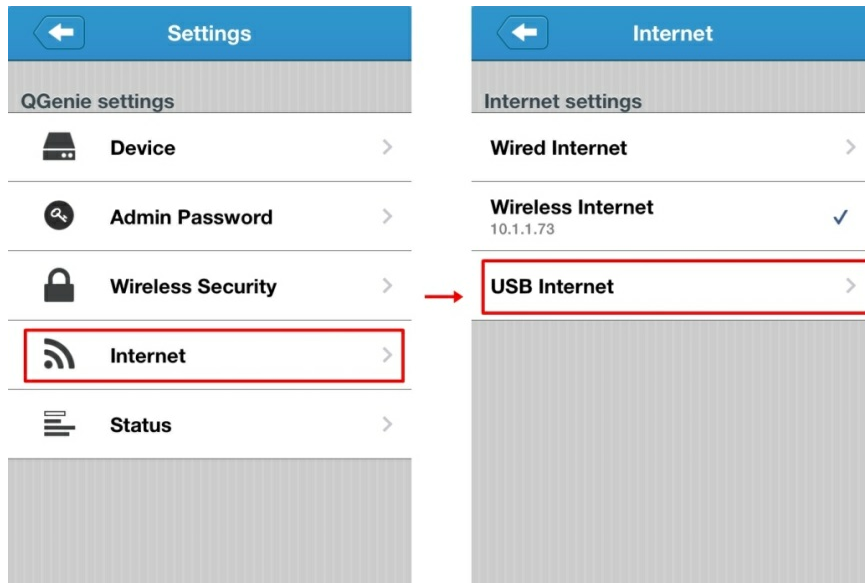
. "OK()"

: QGenie "WPA-Enterprise" "WPA2-Enterprise"

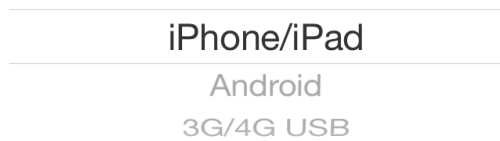
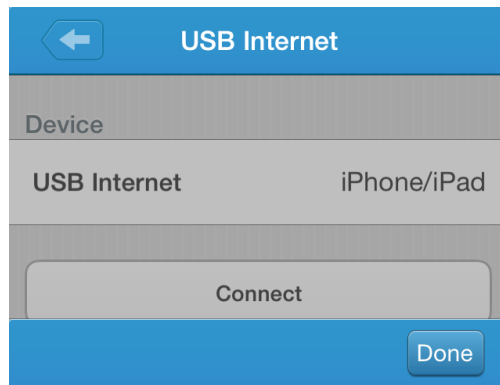


USB

1. QGenie USB (3G/4G ,)
2. "Internet()" "USB Internet(USB)"



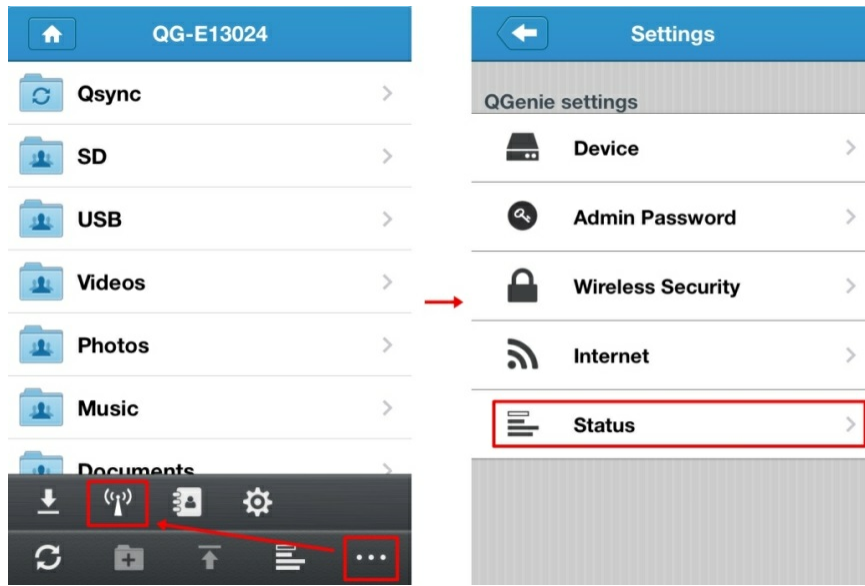
3. USB , Connect() .



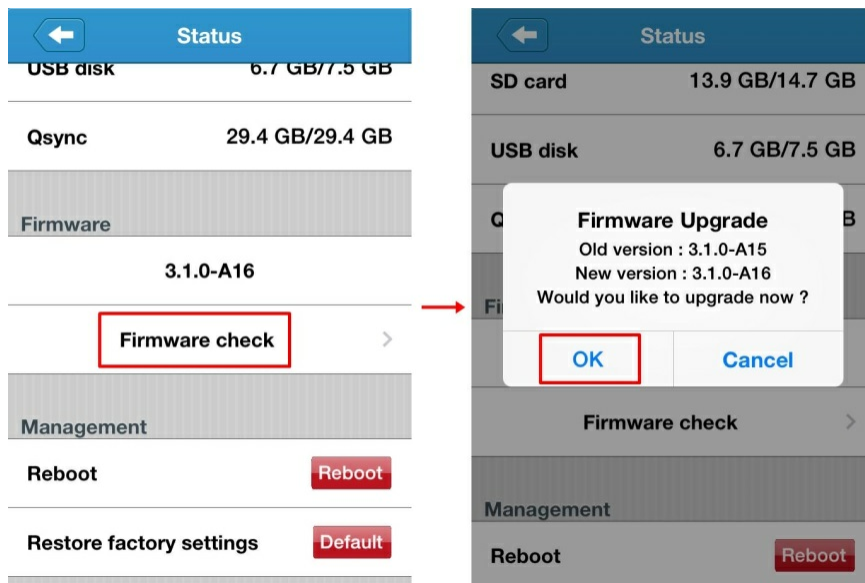
, QGenie .

가 , QGenie

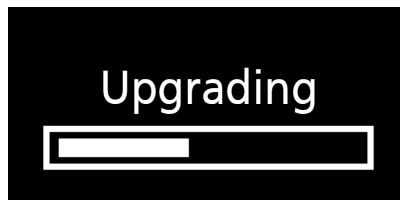
1. QGenie . QGenie LAN .
2. Qfile QGenie .
3. " " " () " "Status()" .



4. "Firmware check()" "OK()" . QGenie가 . QGenie가 "The current firmware is latest()" 가)" 가 .



5. QGenie OLED "Upgrading()"



6. QGenie가

1.5.4

()



가

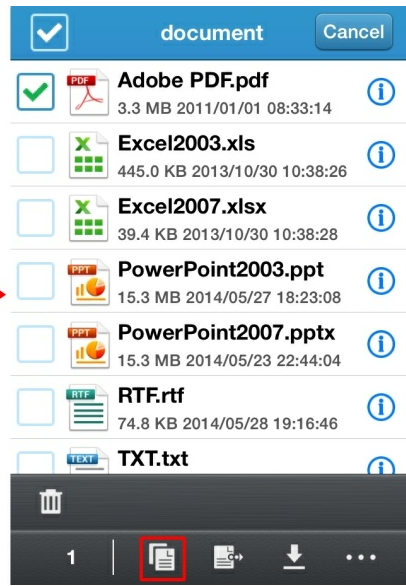
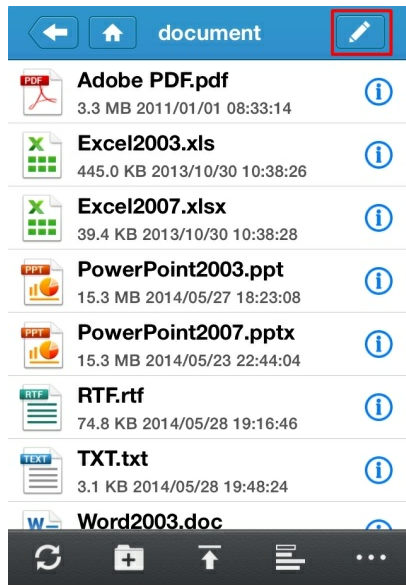
	.
	.
	:
	.(가)
1	

/

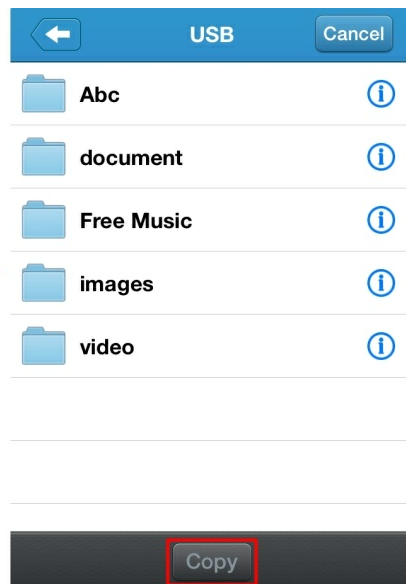
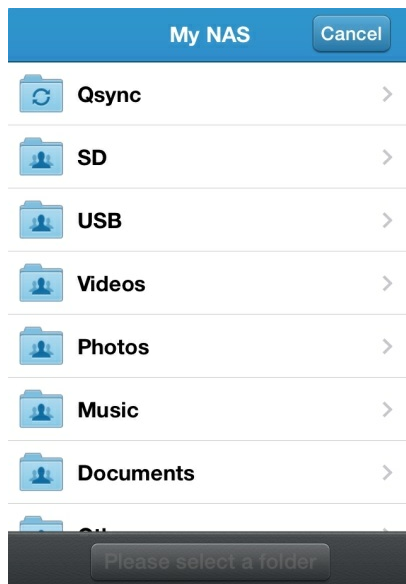
1. " " () ,

" " ()



]

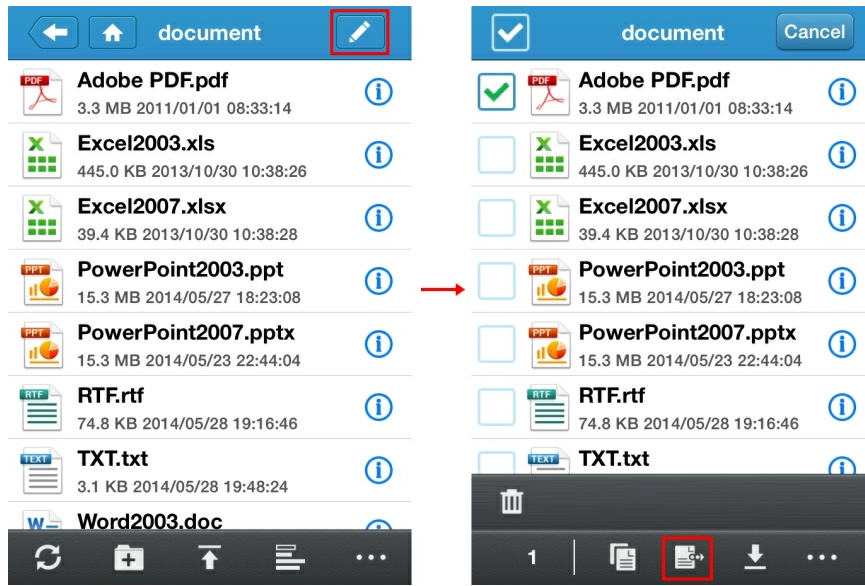


2. "Copy()"

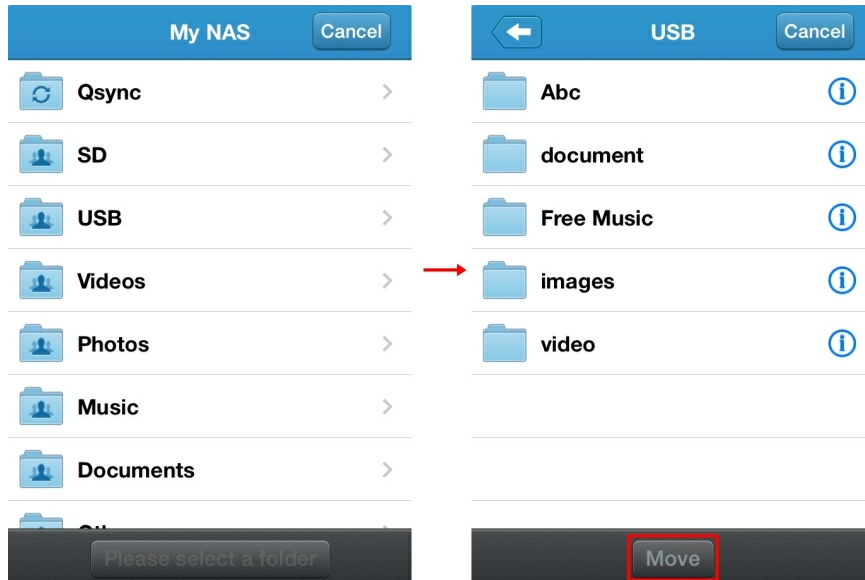


1. "  ()



"  " ()  "

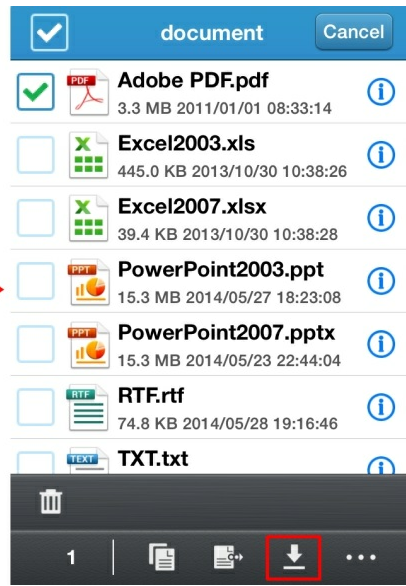
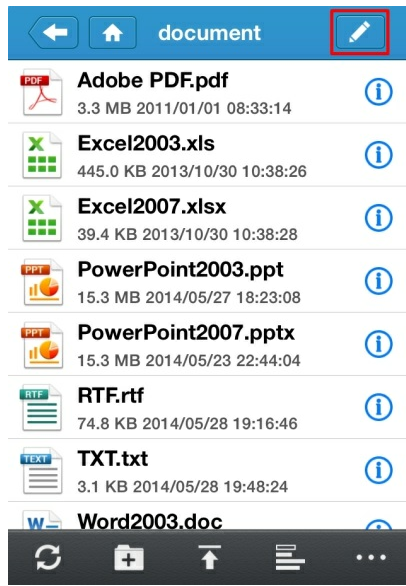


2. "Move()"

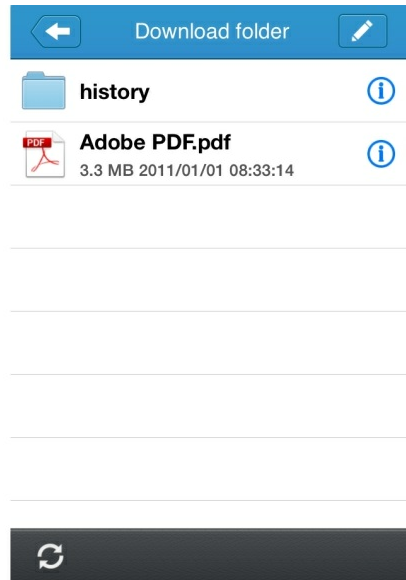


1. " /  , " ()

"  " () .

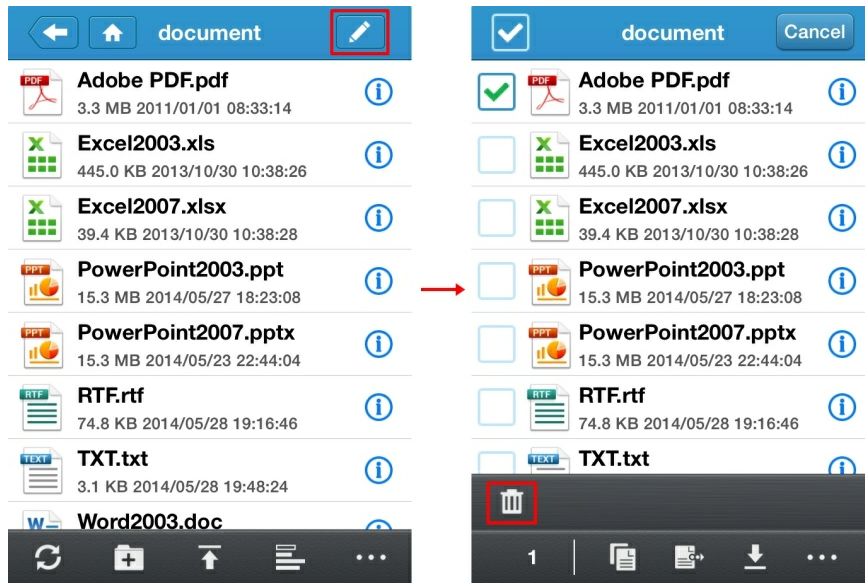


2. 가 " " .

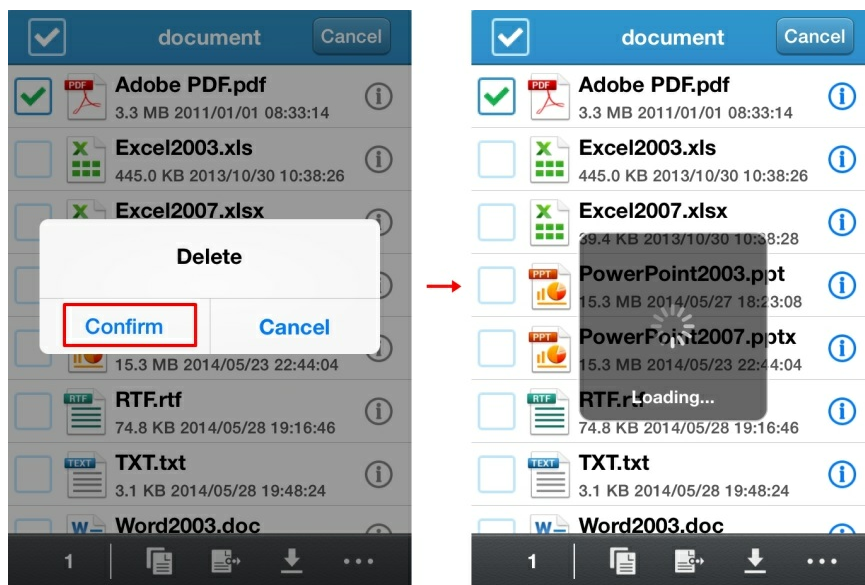


1. "  ()

"  "  .

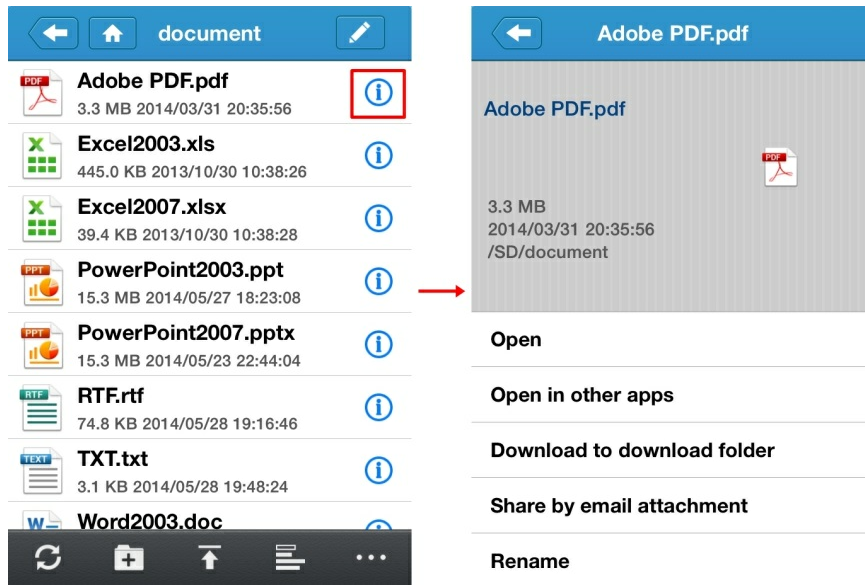


2. / ,

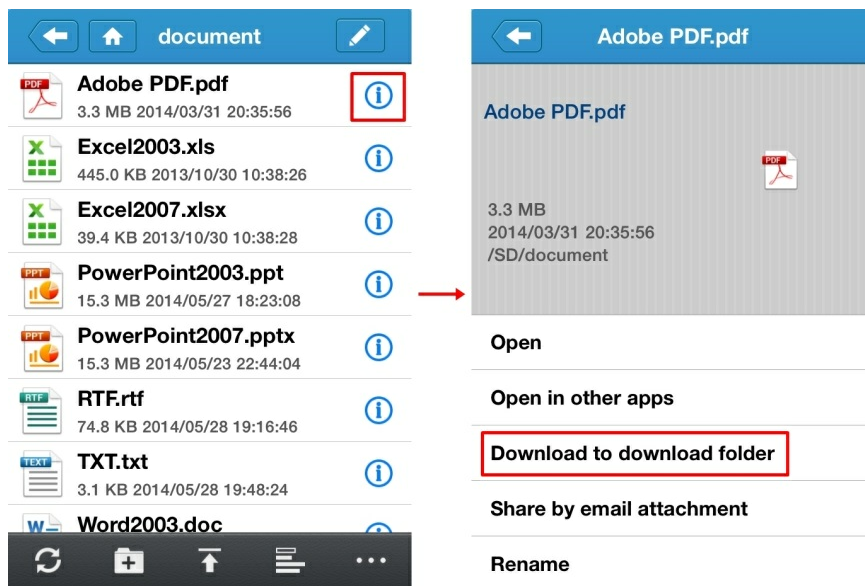


1.5.5 Accesso e gestione dei file (Avanzate)

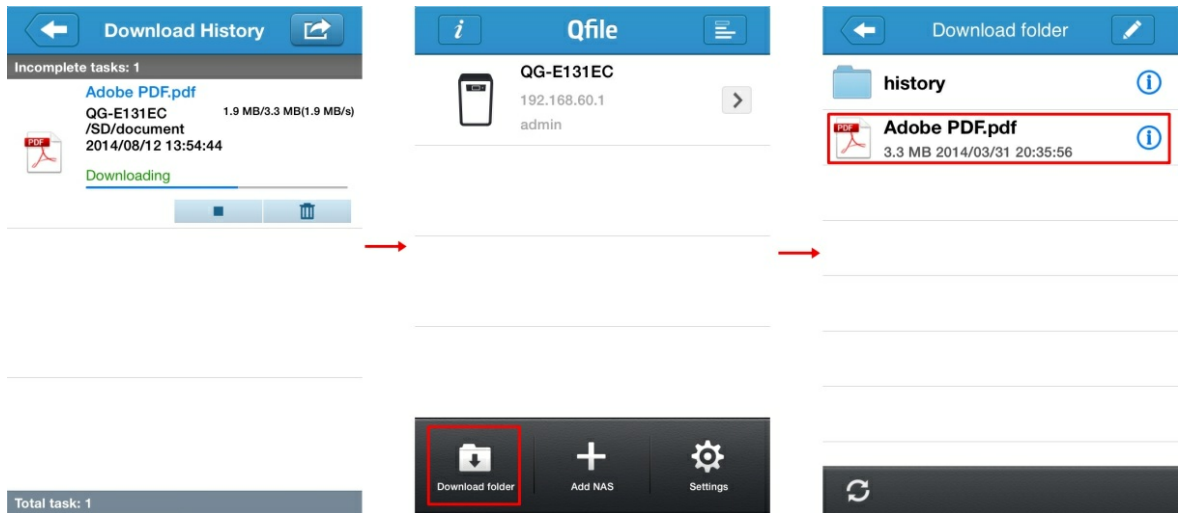
/ " ⓘ " () 가 .



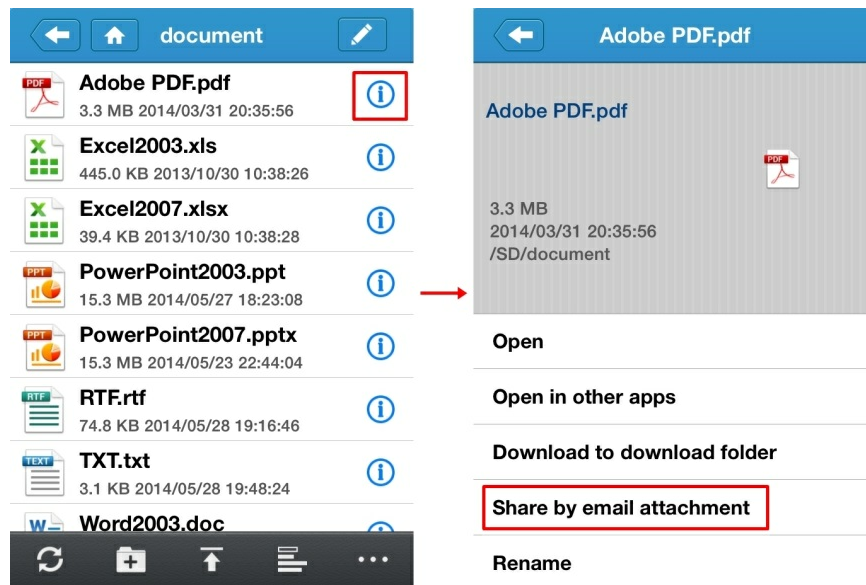
1. / " () " "Download to download folder()"



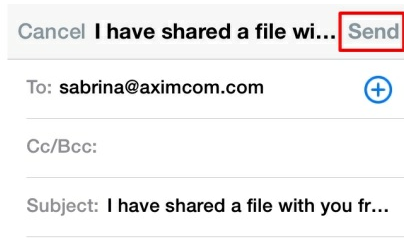
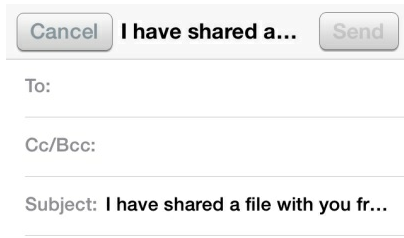
2. "Download folder()"



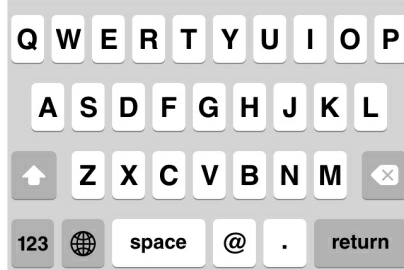
1. " ⓘ " () "Share by email attachment()"



2. "Send()"



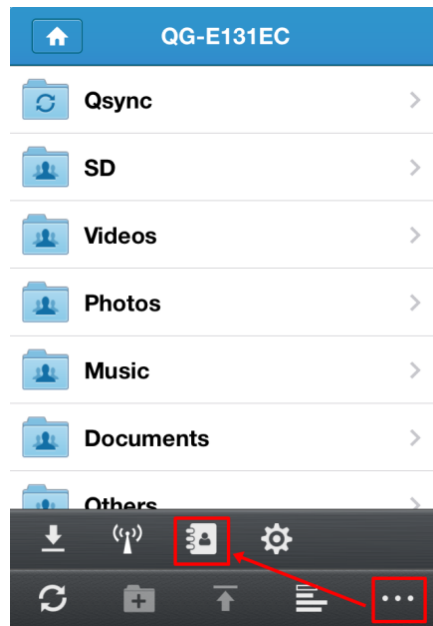
I have shared a file with you from Qfile.



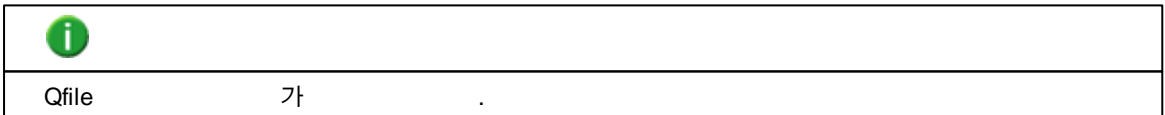
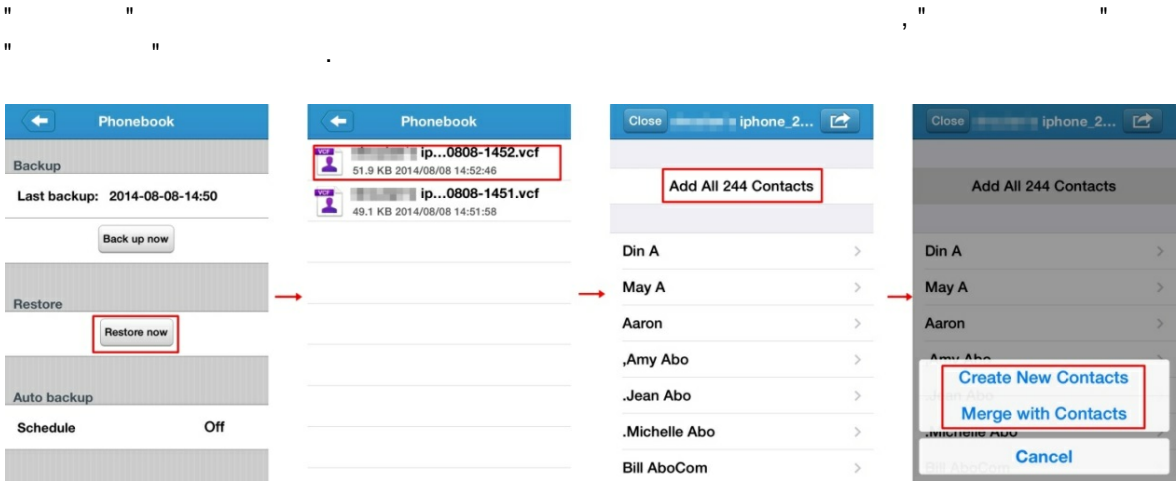
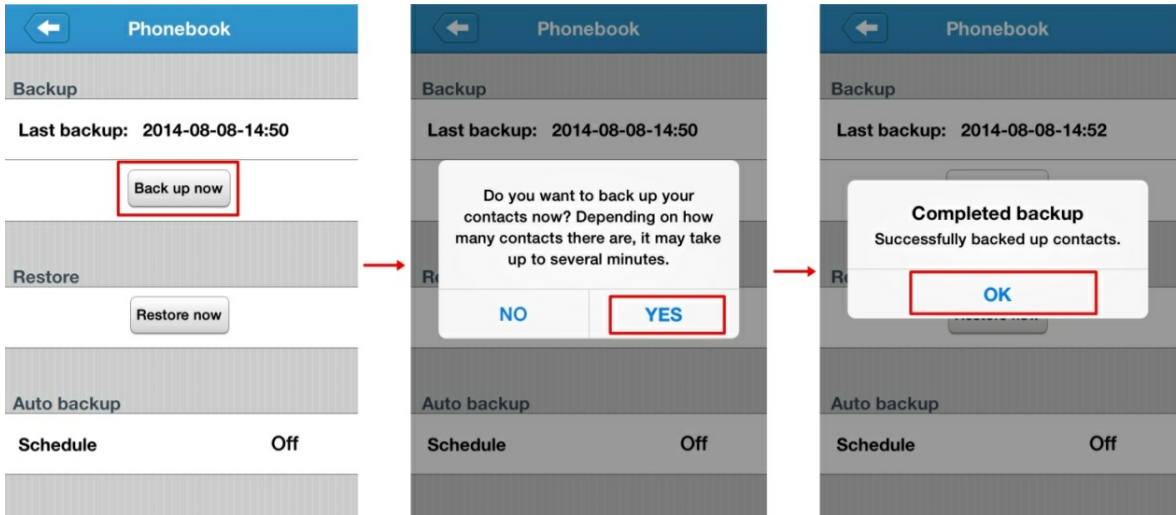
20MB

1.5.6 QGenie / QGenie

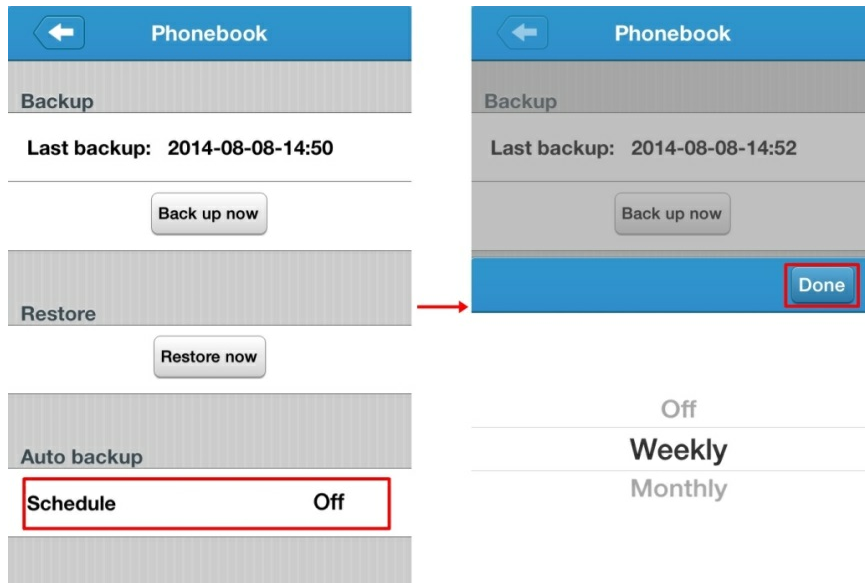
1. QGenie QGenie’ LAN
2. Qfile QGenie
3. " " " " " "



가 QGenie

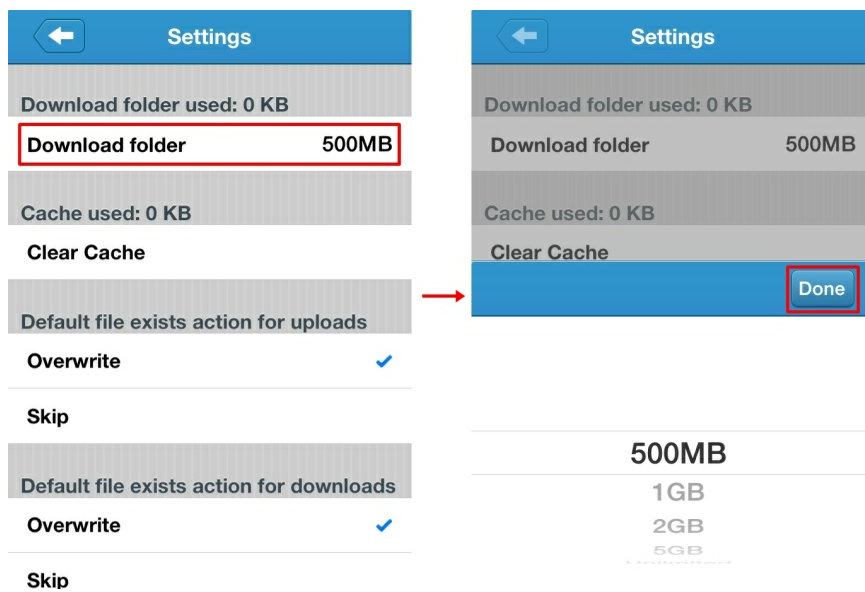


QGenie
 \Qsync\Phonebook\

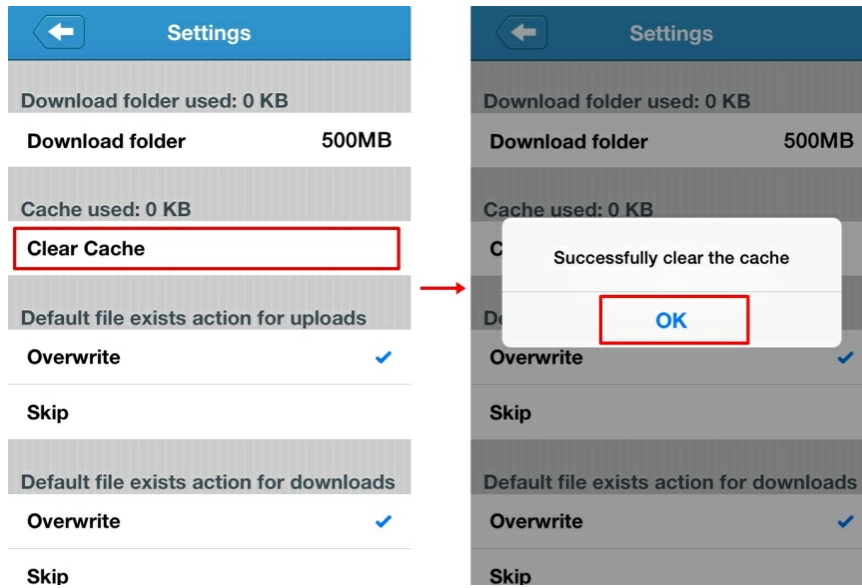


1.5.7 Qfile

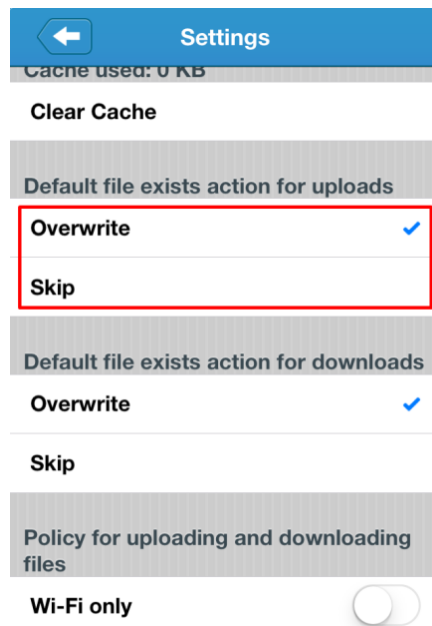
Qfile



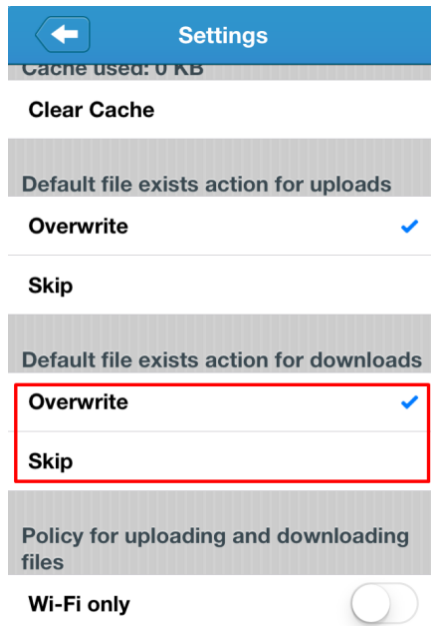
"Clear Cache()"



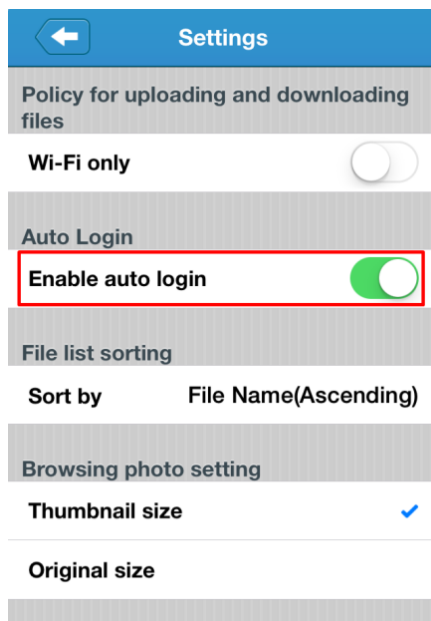
/
 , "Overwrite()" "Skip()"



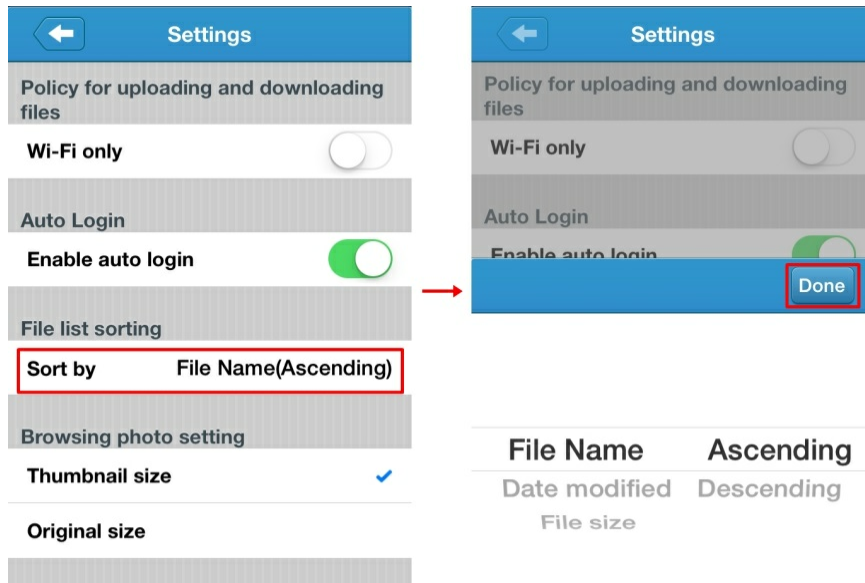
()" , "Overwrite()" "Skip



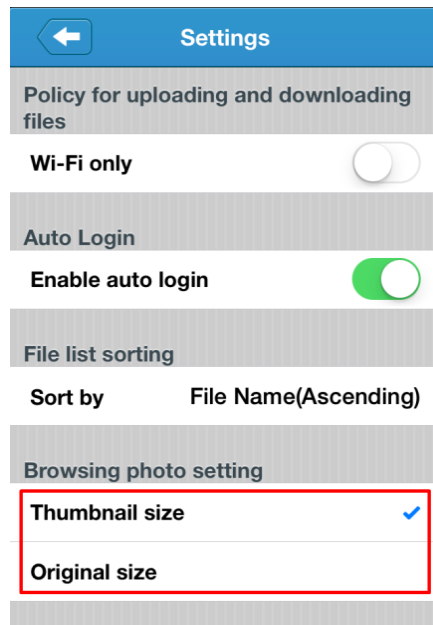
QGenie



"File Name()", "Data modified()", "File size()"

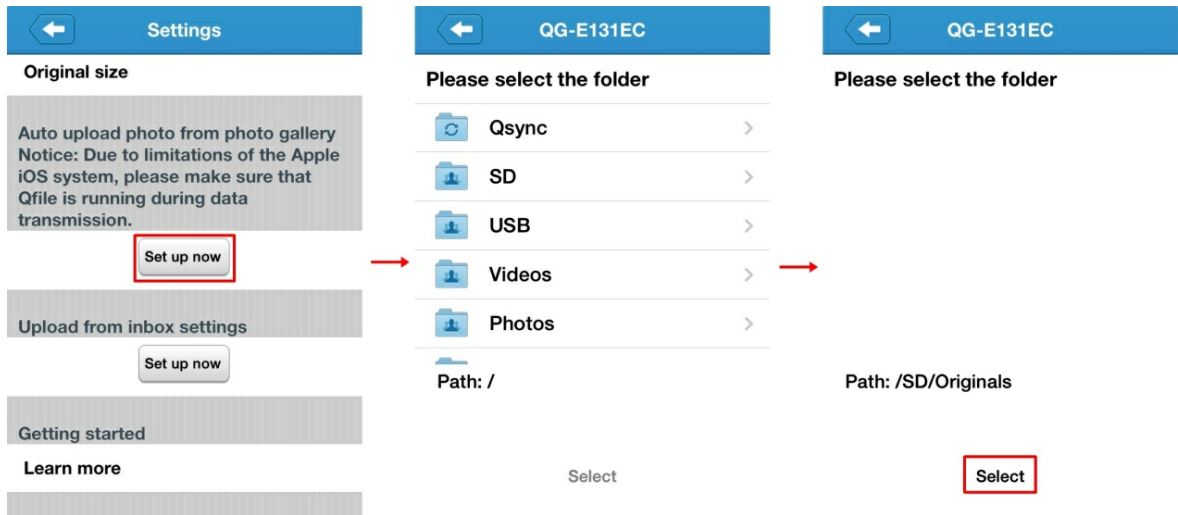


"Thumbnail size()" "Original size()"



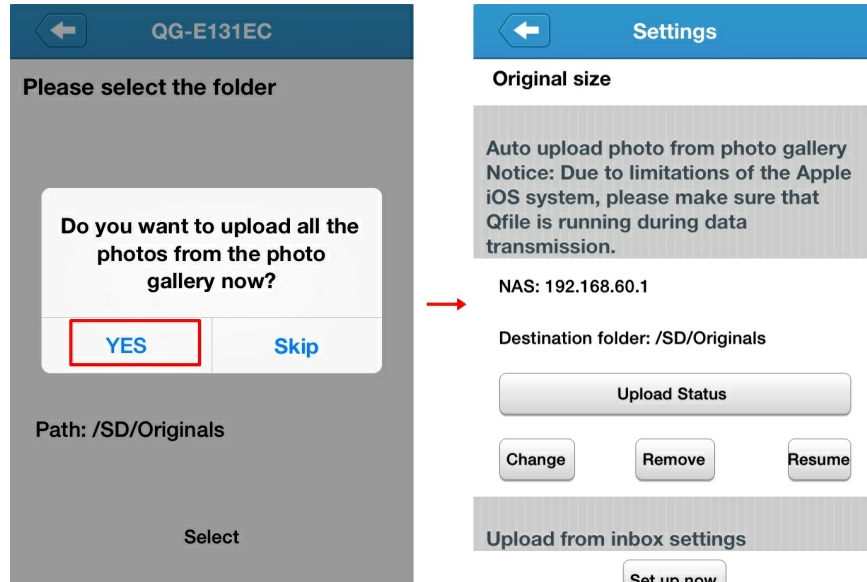
QGenie

1. "Set up now()" , "Select()"

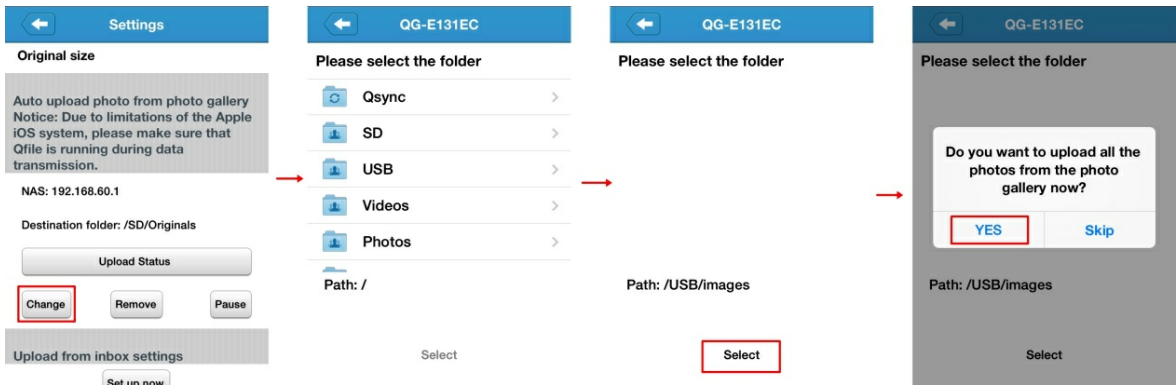


2. "Yes()"

. "Skip()"



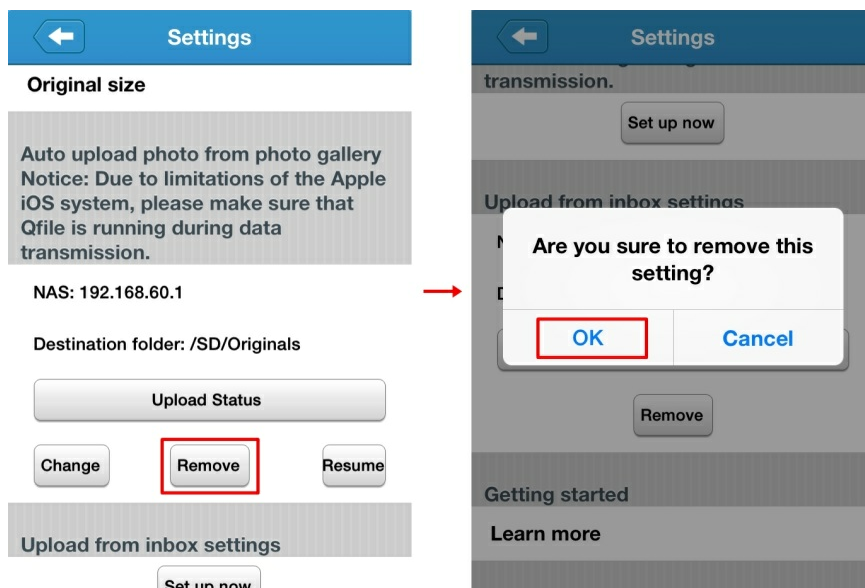
/"Yes()" / "Change()" , "Select()"



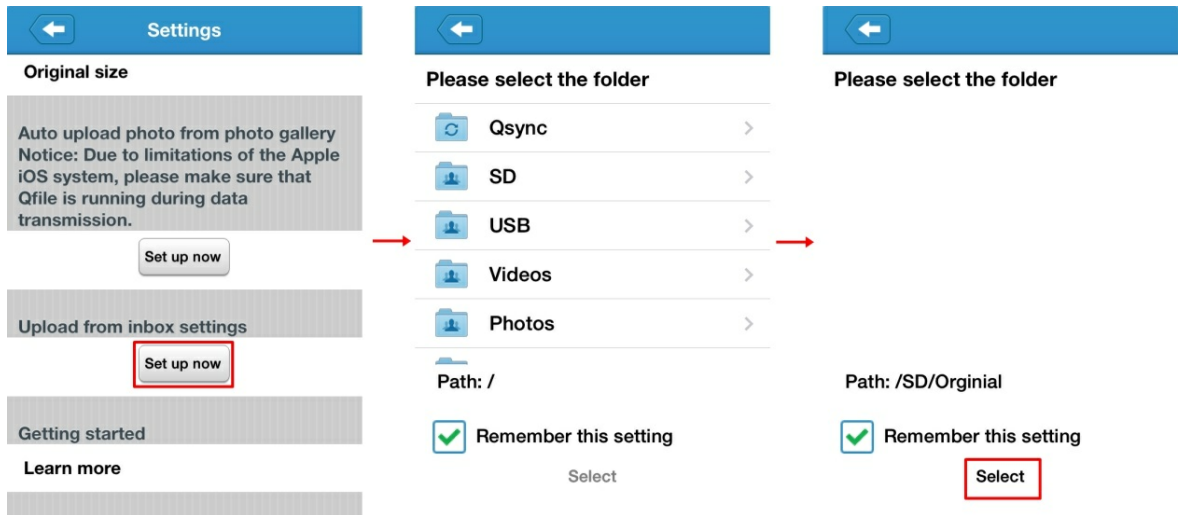
"Remove()"

"OK()"

..

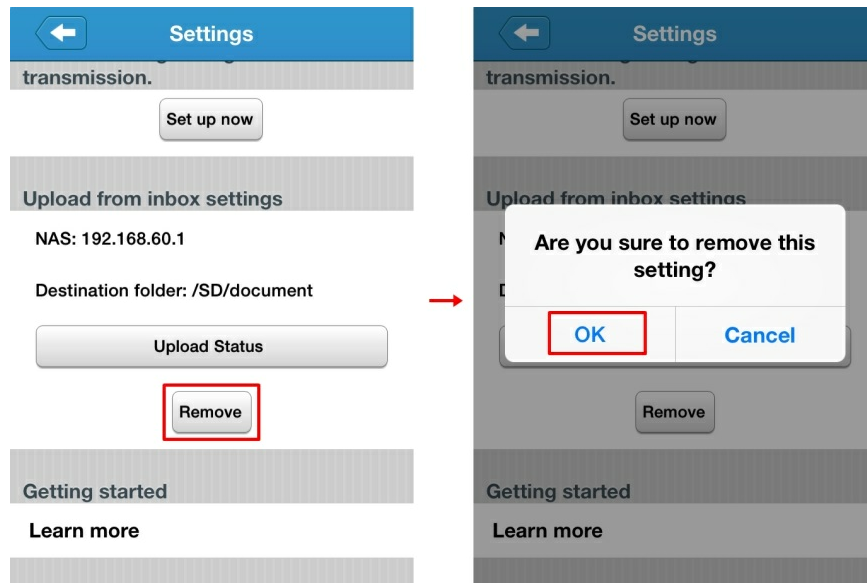


"Select()" ,
 QGenie
 "Set up now()" ,



"Remove()"

"OK()"



1.6 Qfinder

QGenie /

QGenie

가

QGenie

Qfinder

QGenie

()

QGenie

QGenie

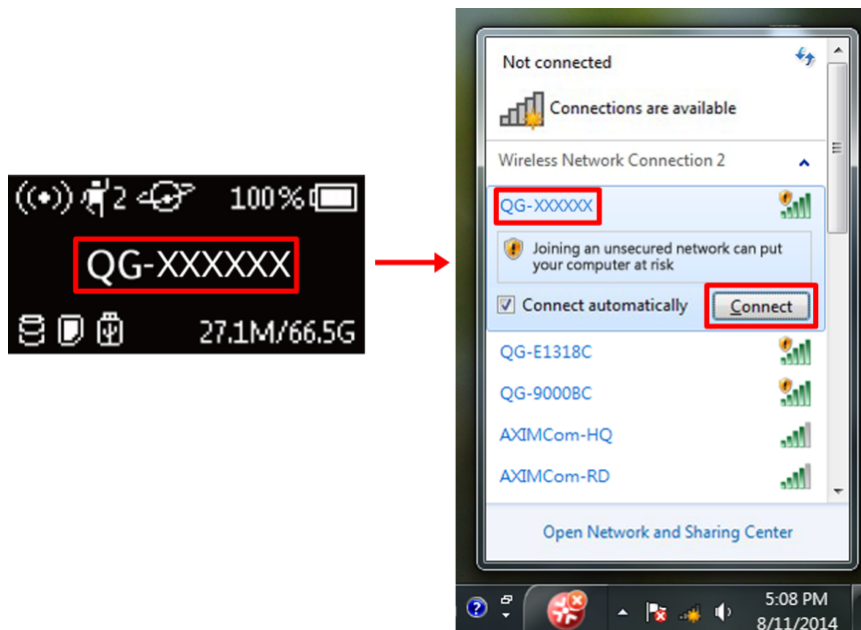
QGenie

Qfinder

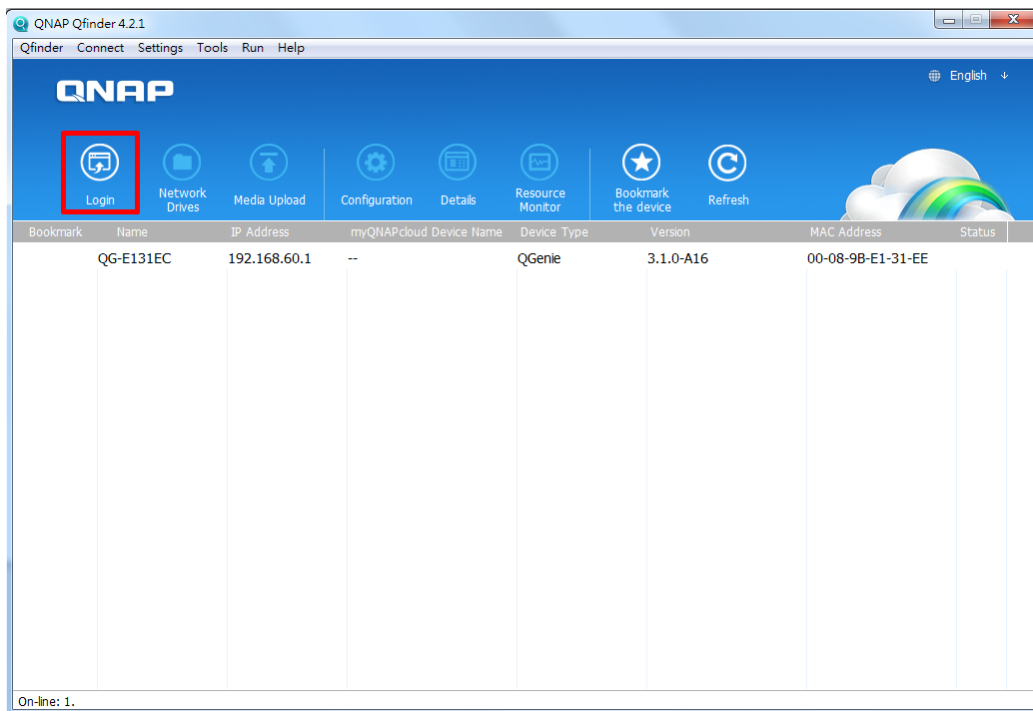
QGenie

1.6.1

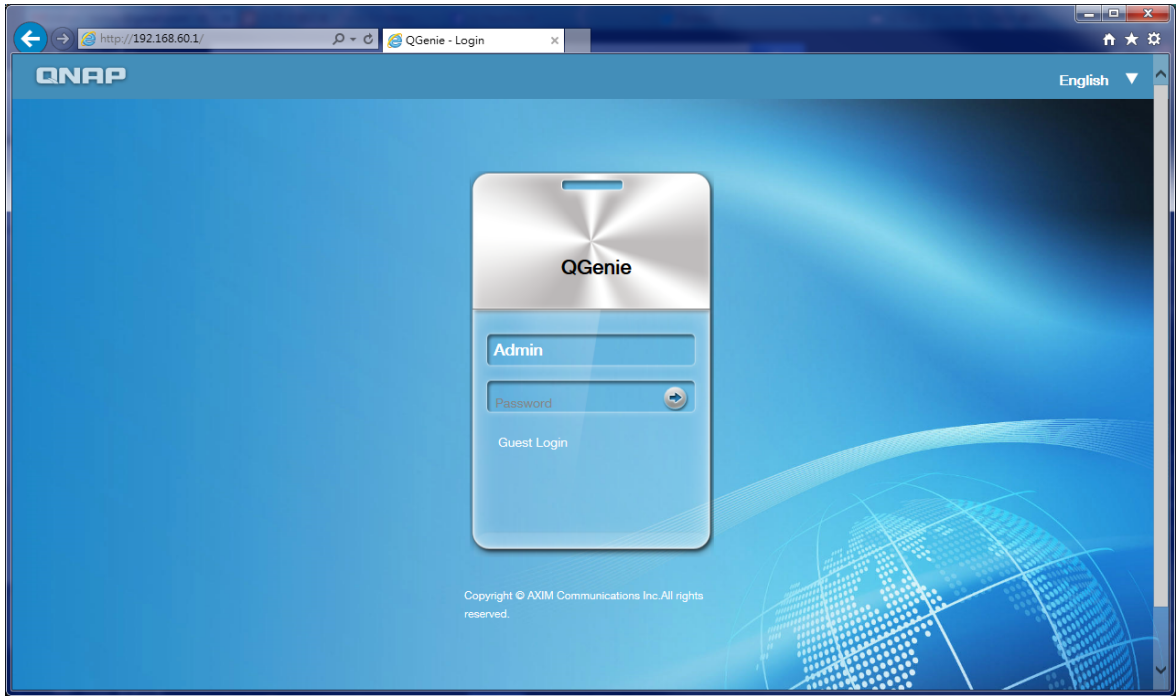
1. PC QGenie LAN



2. Qfinder "Login()"



3. 가 <http://192.168.60.1/> 가



4.

가		
	QGenie	QGenie
	Qsync/SD /USB	SD /USB

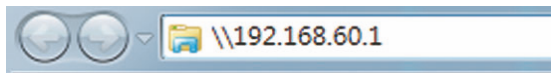
:

1.6.2 () QGenie

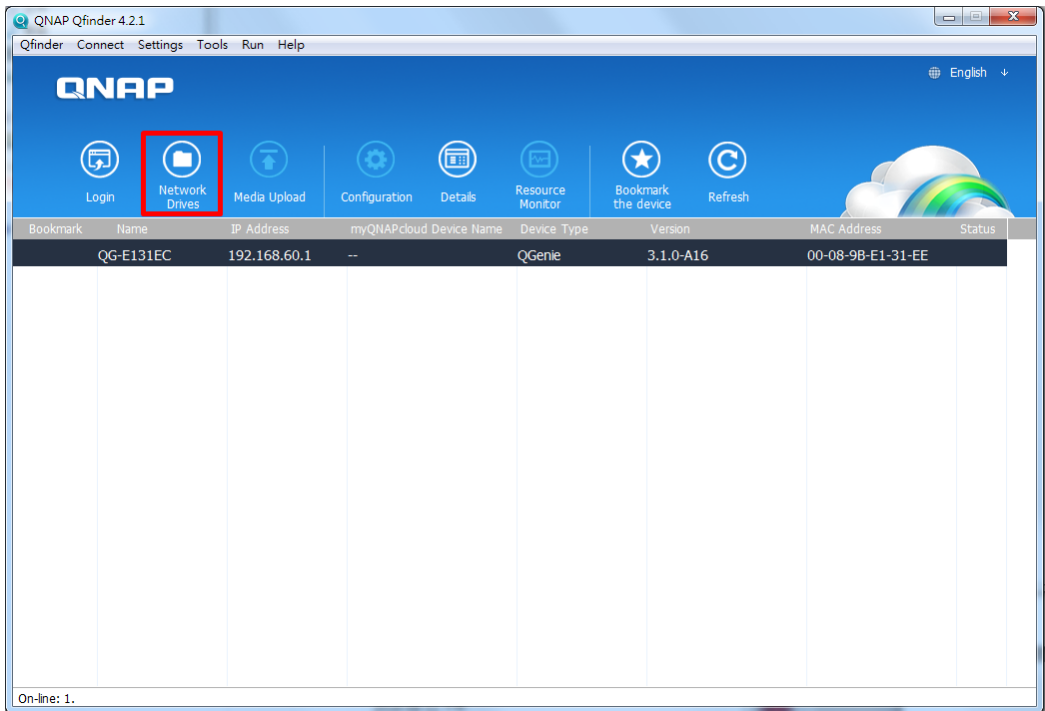
Windows PC QGenie

1. LAN QGenie PC
2. Windows QGenie 2가 가

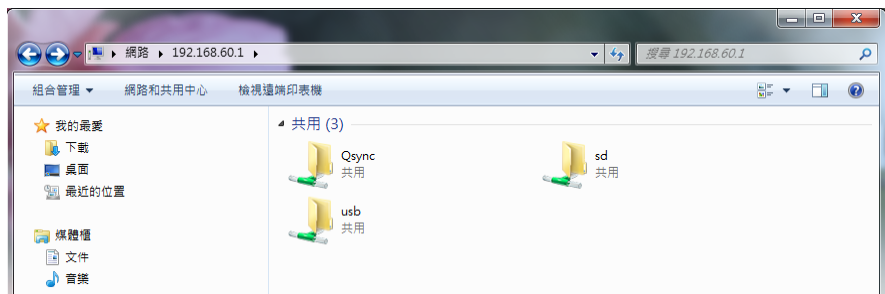
1: Windows Explorer "\\192.168.60.1"



2: Qfinder "Network Drives()"



3. Qsync, SD USB

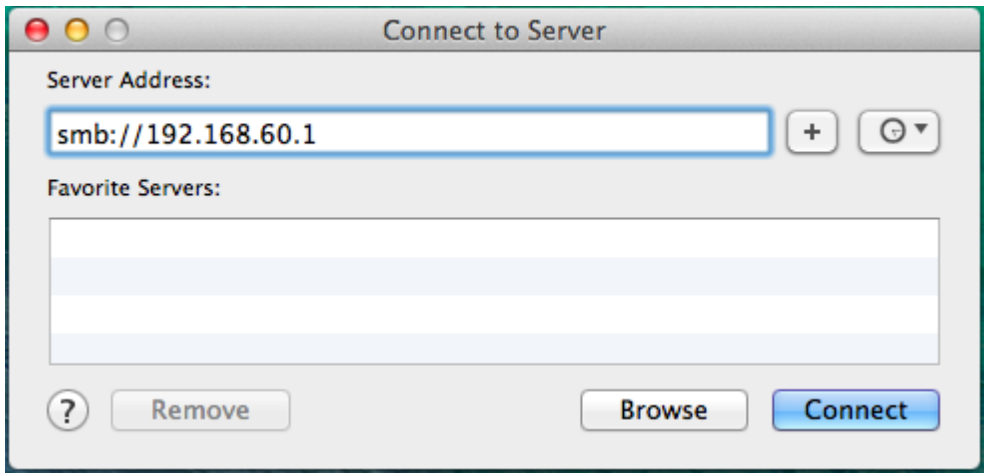


Mac QGenie

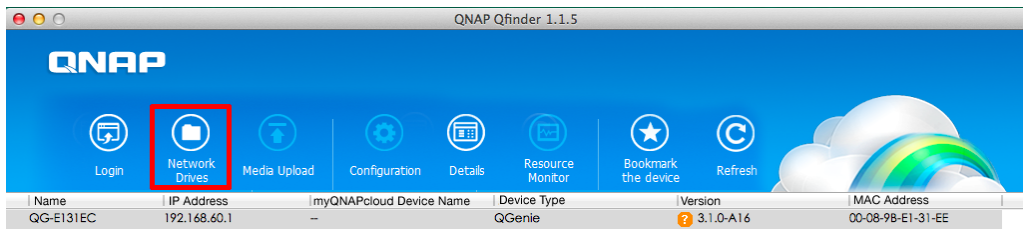
1. LAN QGenie Mac
2. Mac QGenie

2가 가

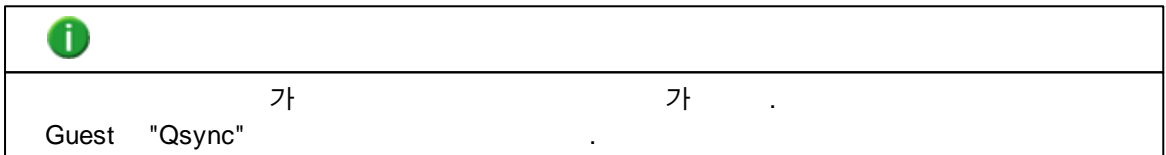
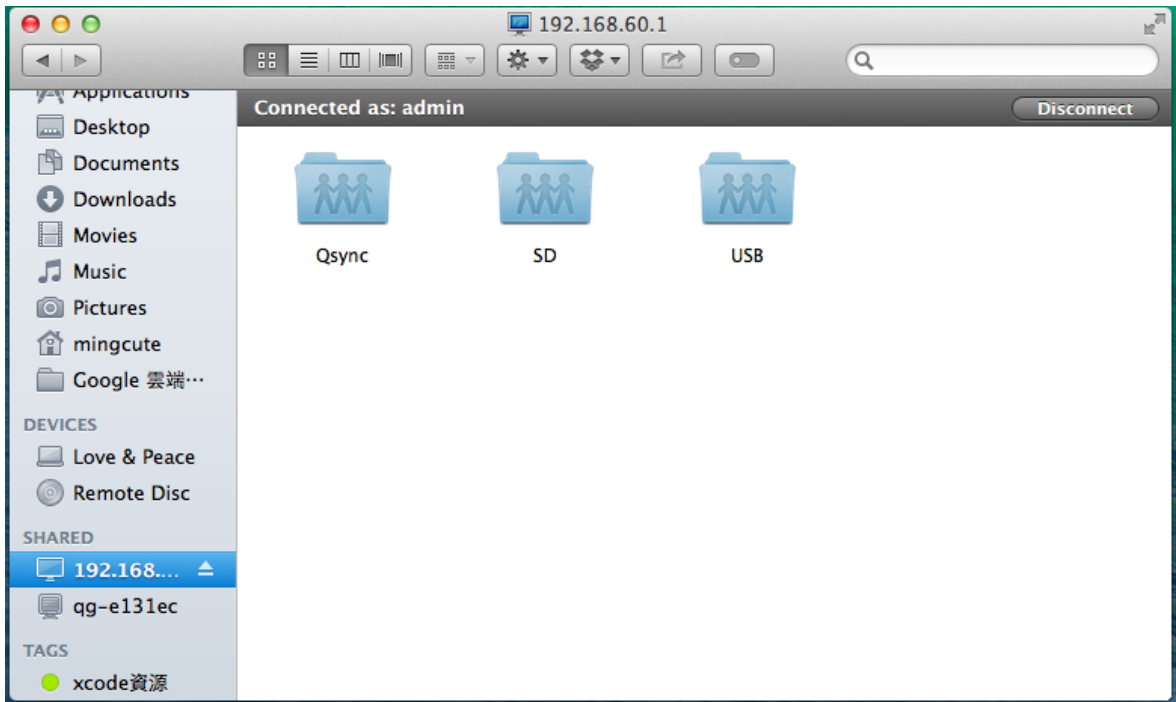
1: "Go()" "Connect to Server()" , "smb://192.168.60.1"



2: Qfinder "Network Drive()"

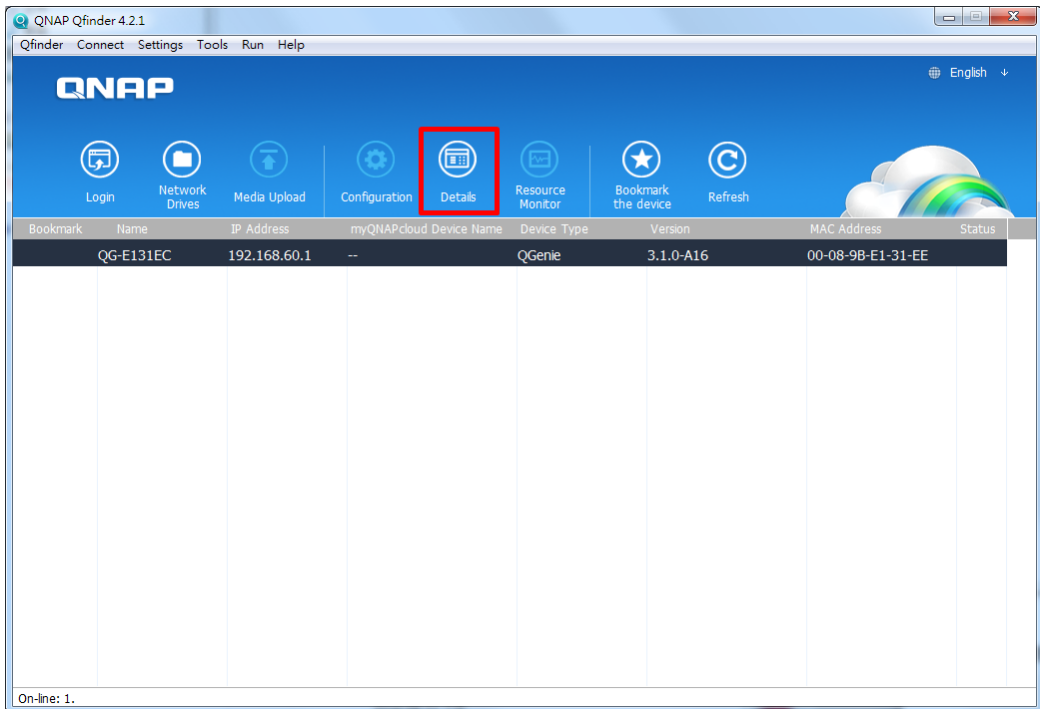


3. Qsync, SD USB

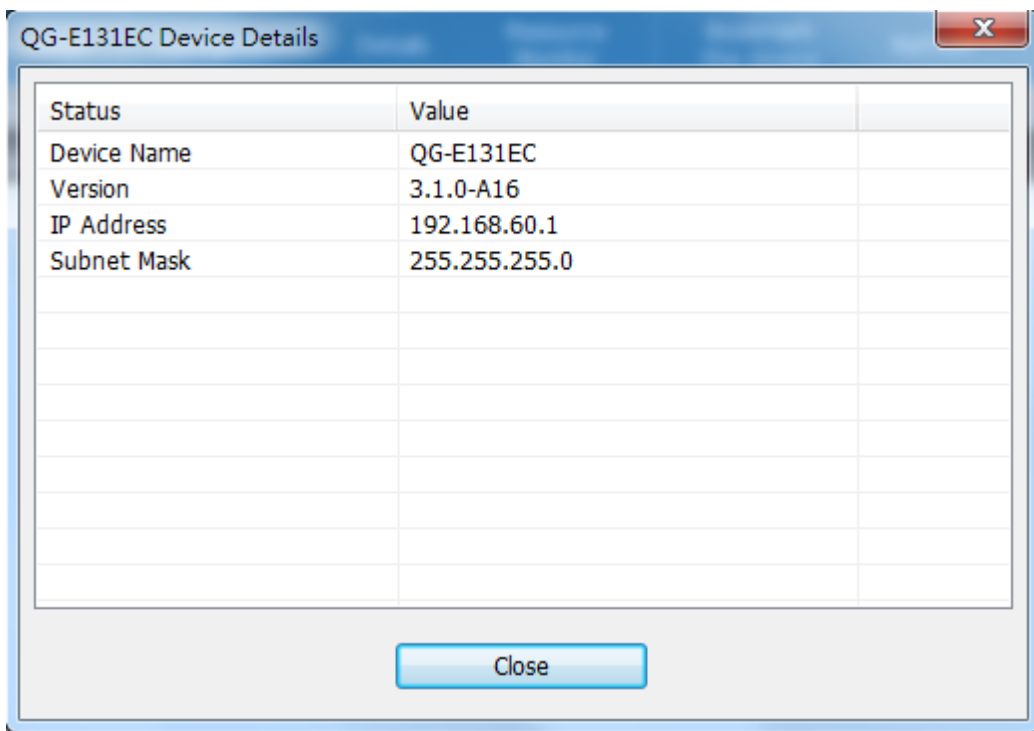


1.6.3 QGenie

1. QGenie LAN PC .
2. Qfinder "Details() " .



3. QGenie 가 .



1.7 QGenie /

QGenie 가 ,

QGenie

QGenie

QGenie

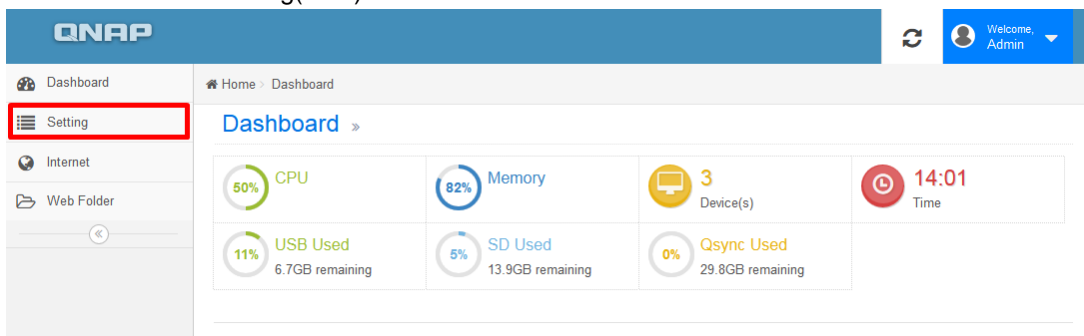
USB

QGenie

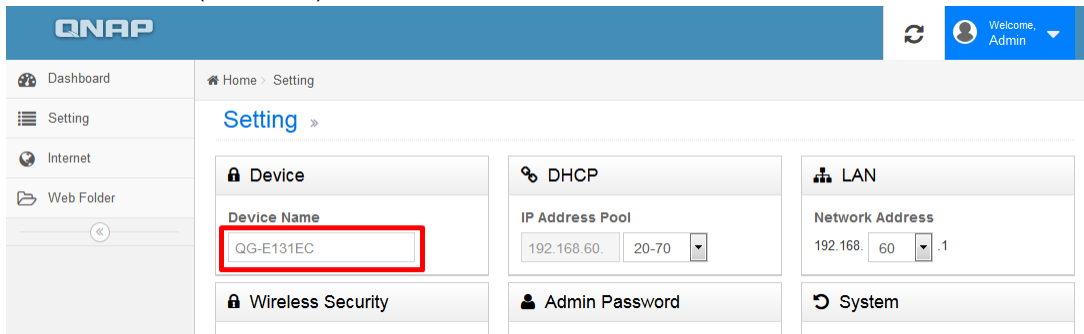
QGenie

1.7.1

- 1.
2. "Setting()"

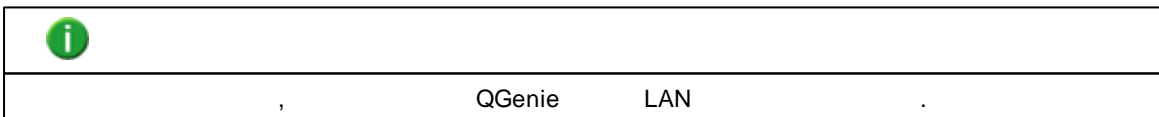


3. "Device Name()"

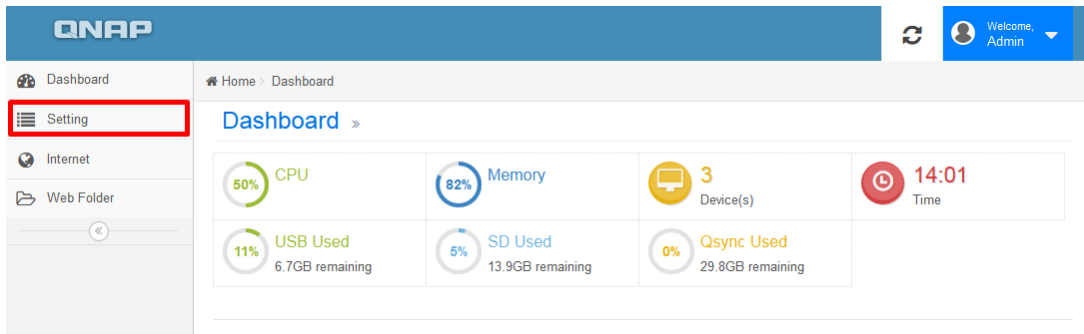


4. "Save()"

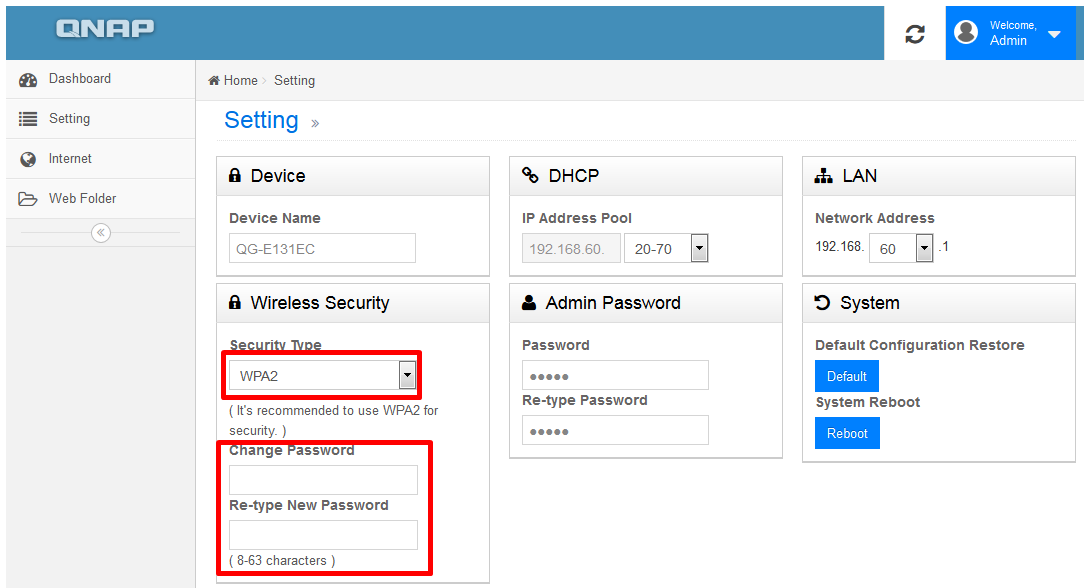
QGenie가




- 1.
2. "Setting()"



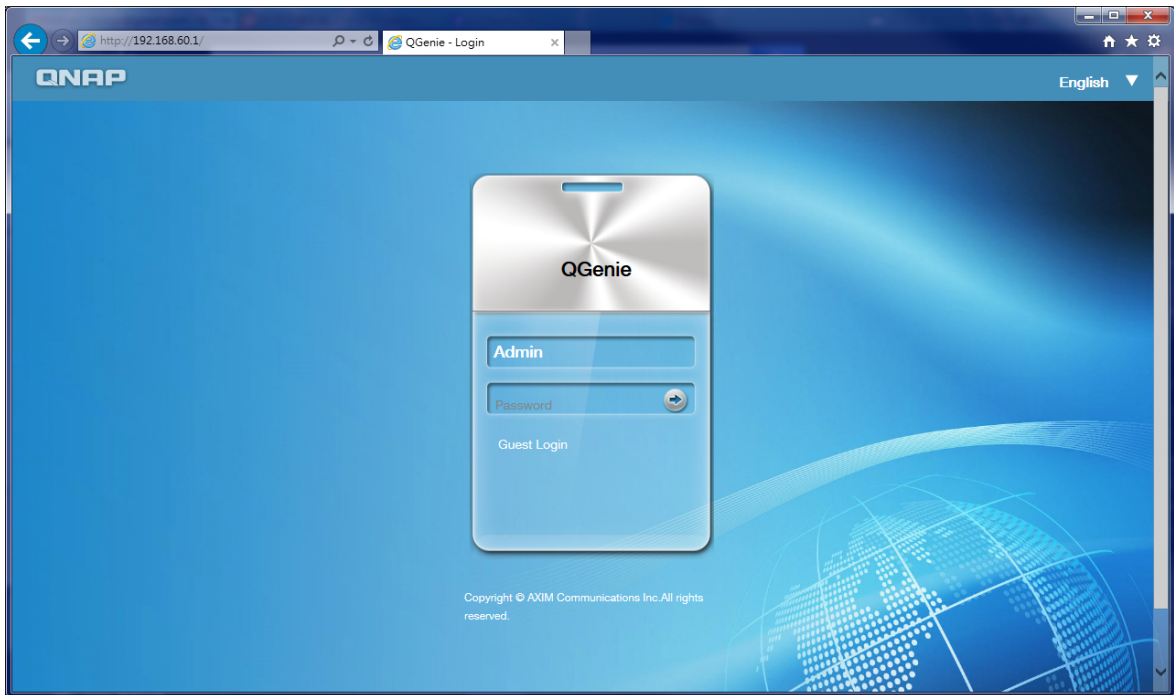
3. "Security Type()" WPA2



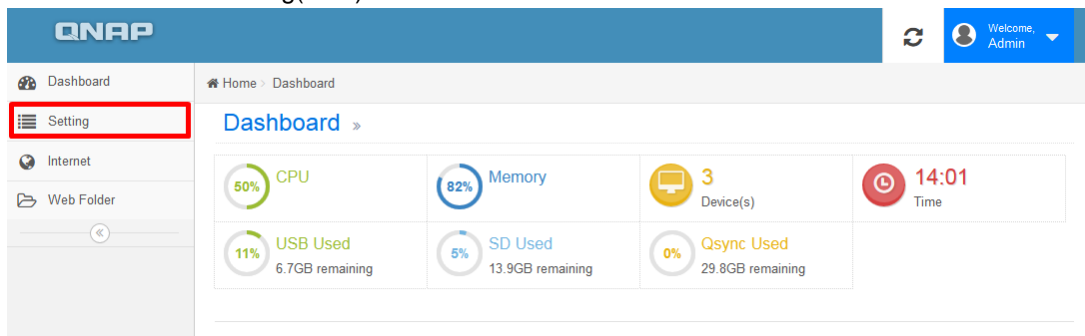
4. , "Save()"


<ul style="list-style-type: none"> ▪ QGenie ▪ WPA/WPA2, 8 ~ 63 ▪ WEP, 5 ~ 13

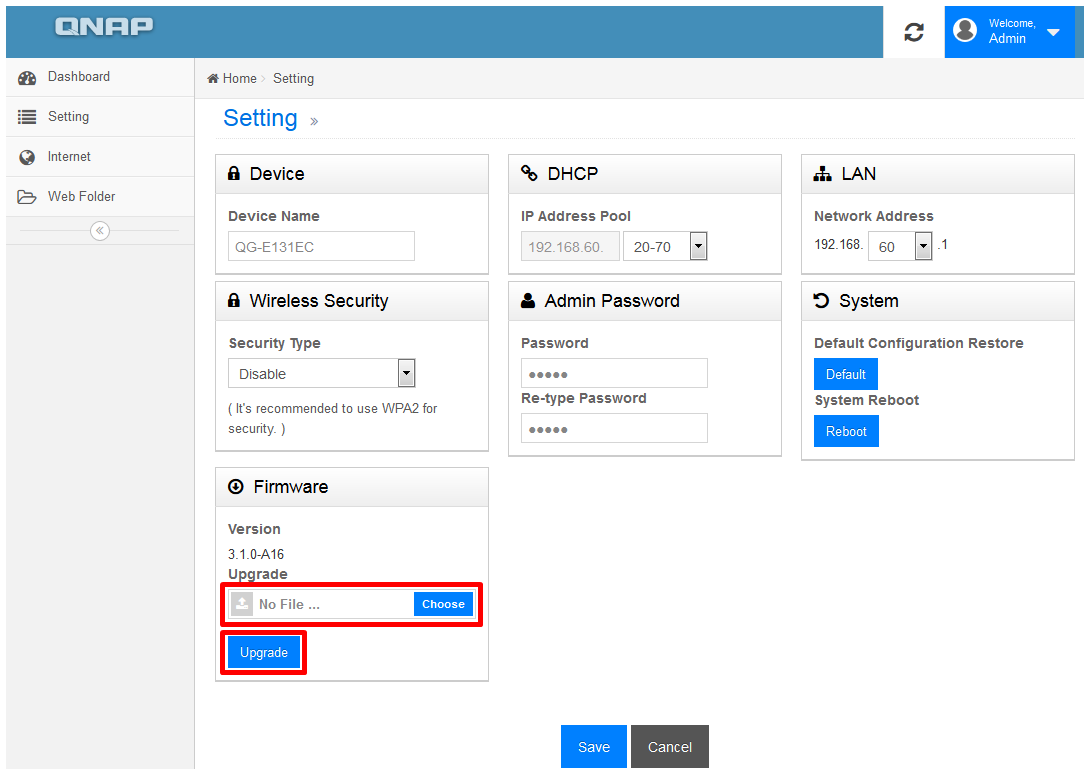
1. QGenie . PC QGenie LAN
2. <http://192.168.60.1/>



3. "Setting()"



4. "Firmware()"가 . PC
"Update()" .



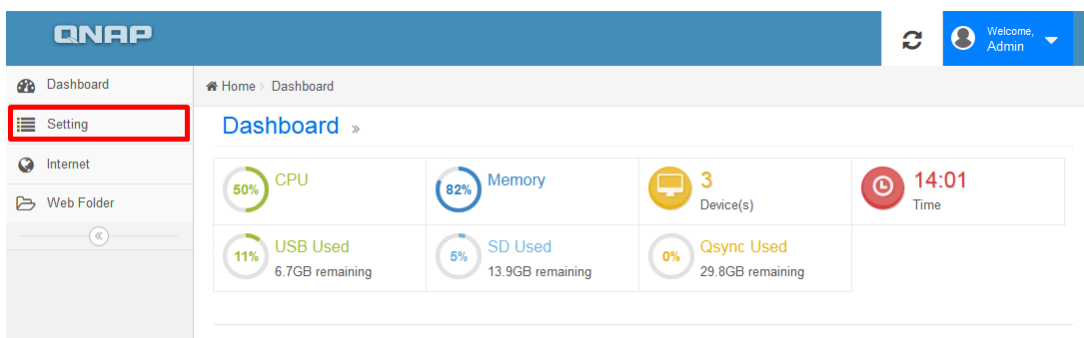
5. QGenie OLED

"Upgrading()"



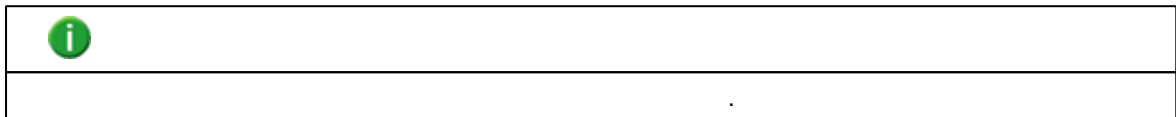
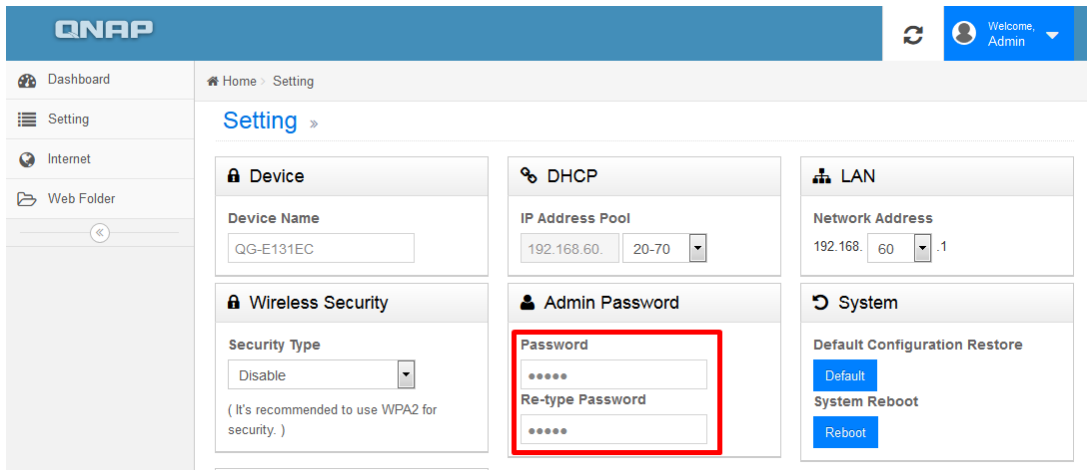
1.

"Setting()"

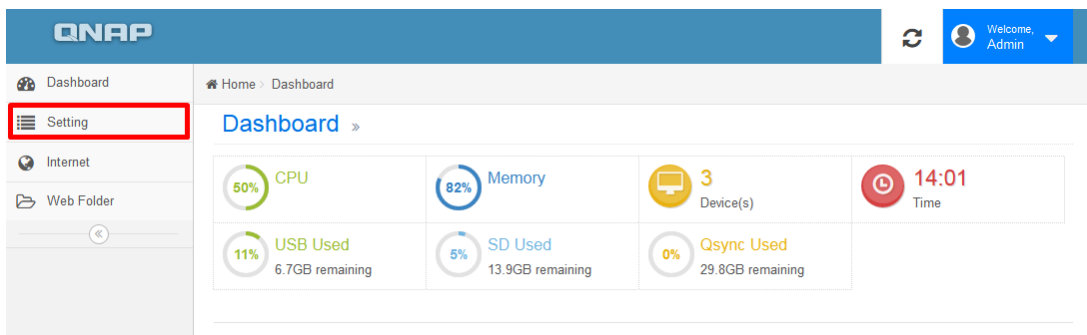


2. "Admin Password()"

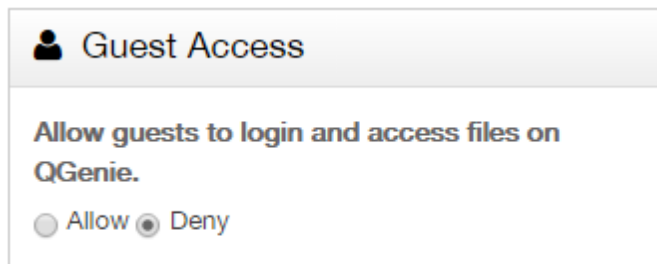
, "Save()"



1. (3.1.1)
 "Setting()"



2. "Guest Access()"가 "Deny()."

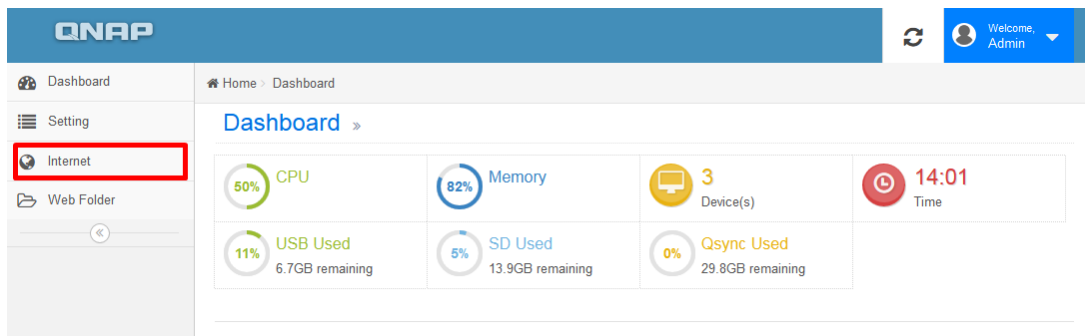


3. "Allow()" (Samba), Qfile

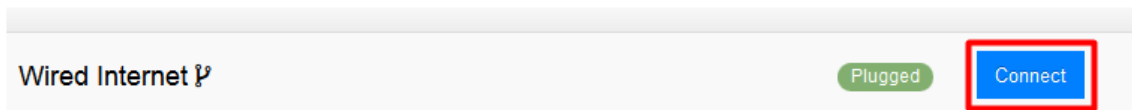
1.7.2 QGenie

- QGenie 374
- QGenie
 - QGenie
 - USB
 - QGenie (1) (iPhone/Android)
 - 3G/4G USB

-
- "Internet()"



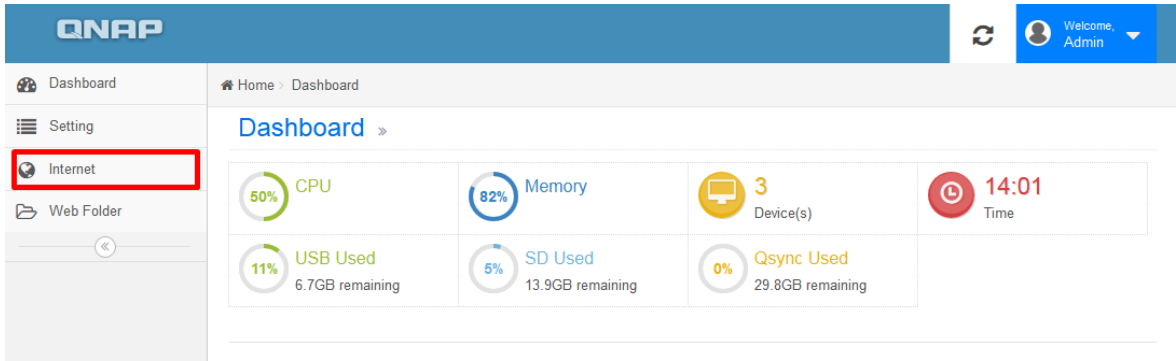
- "Wired Internet()" "Connect()"



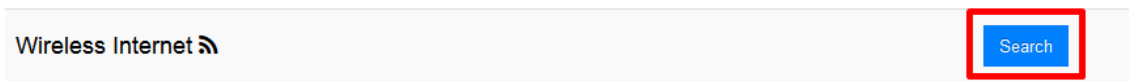
- PPPoE : If you have an exact username and password, choose this.
- Static IP : If you already have an IP address, choose this.
- DHCP : If you have no any information from your network provider, choose this.

- DHCP: 가
- IP: DHCP , IP
- PPPoE: QGenie ADSL/VDSL ,

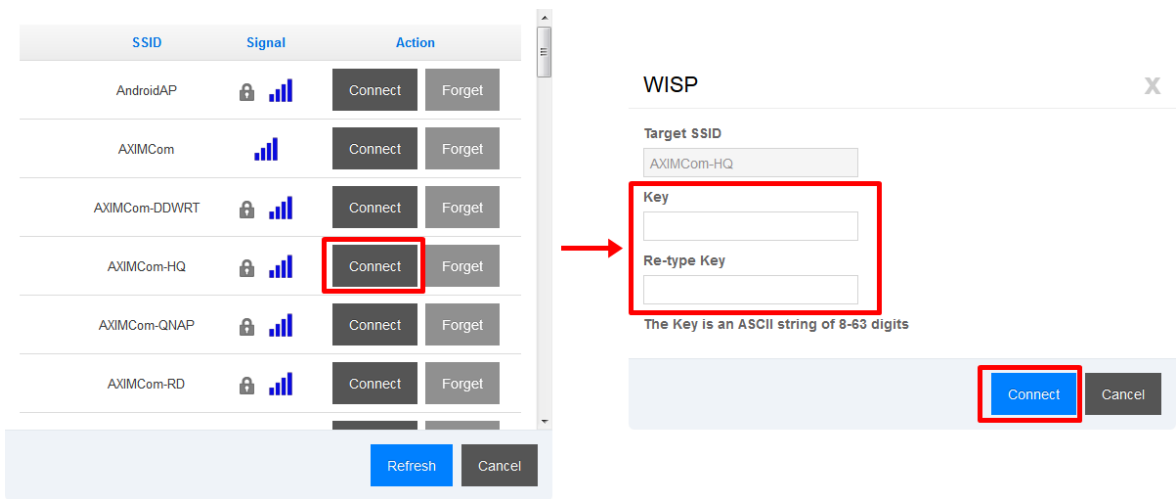
-
- "Internet()"



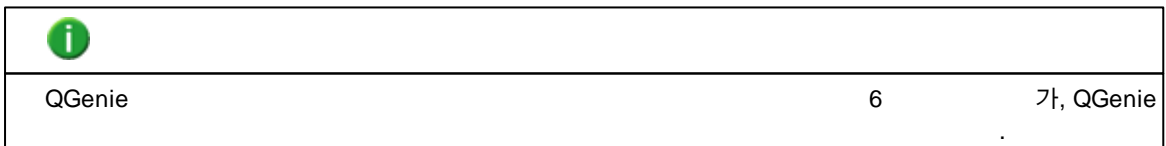
3. "Search()"



4.

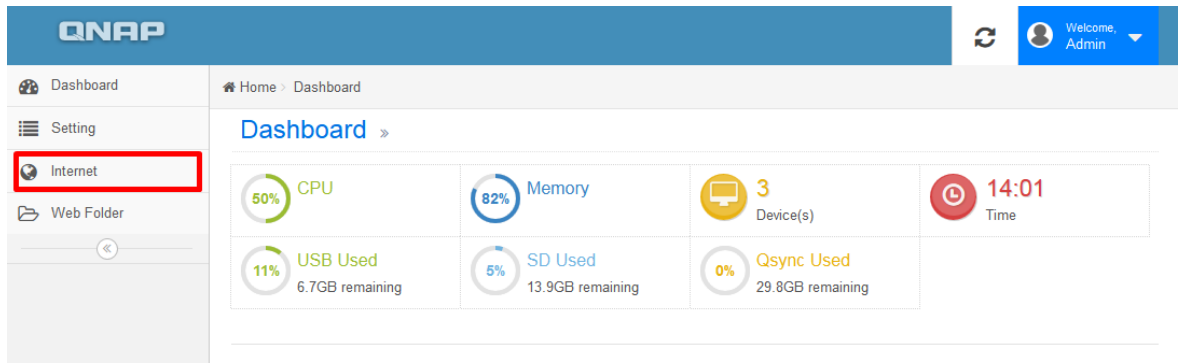


QGenie가 . QGenie

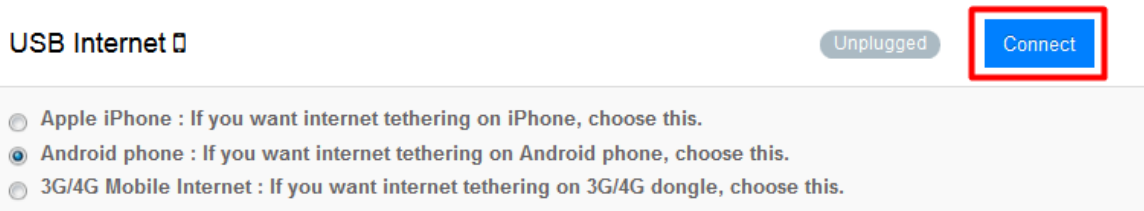


USB

- 1.
2. "Internet()"

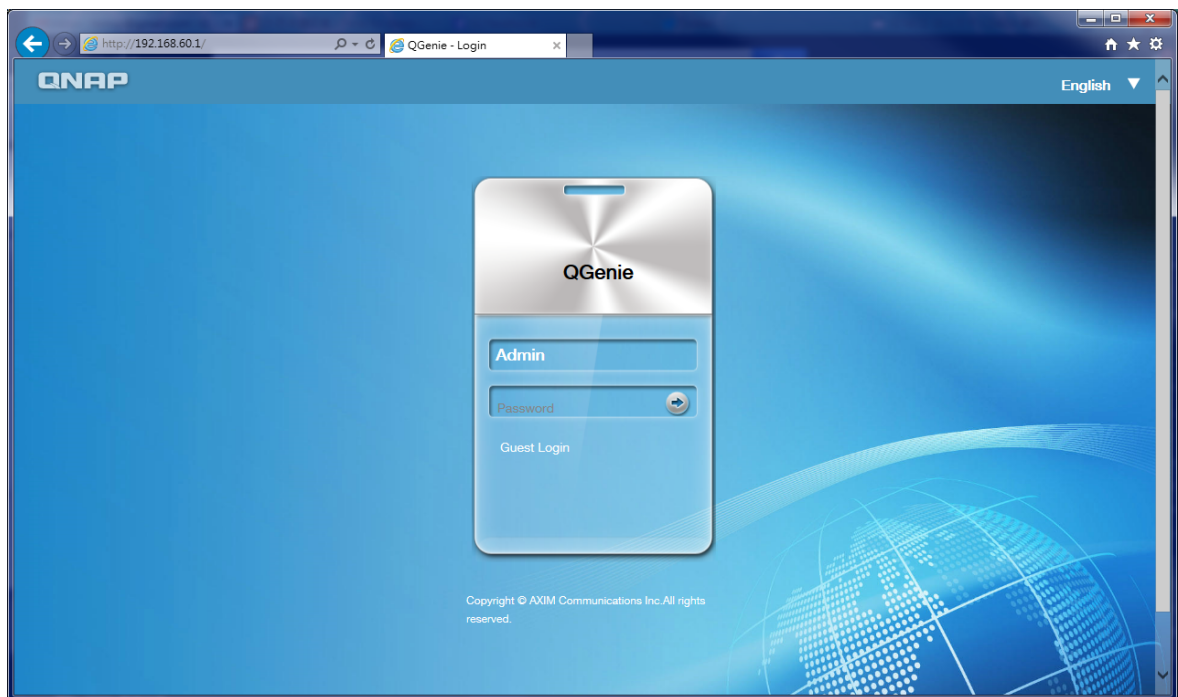


3. USB , "Connect()" .

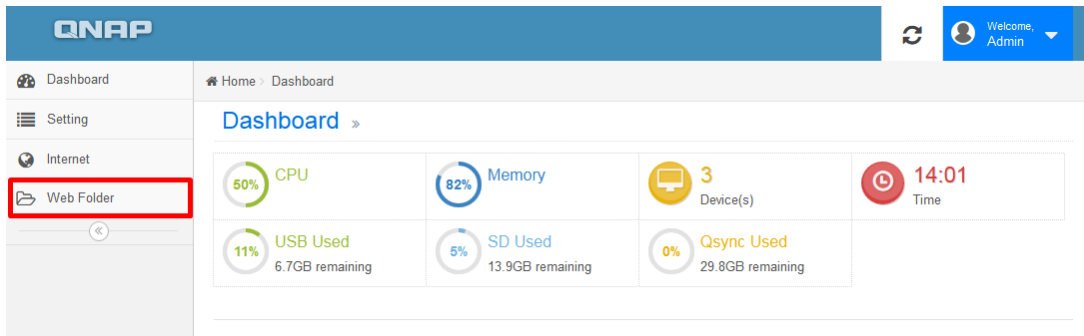


1.7.3 QGenie

1. PC QGenie’ LAN <http://192.168.60.1/>
 . Admin Guest .



2. [] SD / USB .

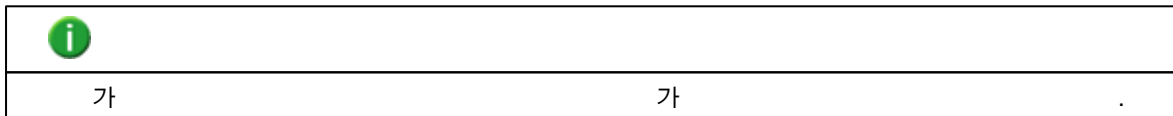


4. SD USB

Index of /

Name	Last Modified	Size	Type
Parent Directory/		-	Directory
Documents/	2011-Jan-01 00:00:08	-	Directory
Music/	2011-Jan-01 00:00:08	-	Directory
Others/	2011-Jan-01 00:00:08	-	Directory
Photos/	2014-Aug-08 05:03:04	-	Directory
Qsync/	1970-Jan-01 00:00:00	-	Directory
SD/	2014-Aug-14 04:32:16	-	Directory
USB/	1970-Jan-01 00:00:00	-	Directory
Videos/	2014-Aug-08 05:01:16	-	Directory

QGenie

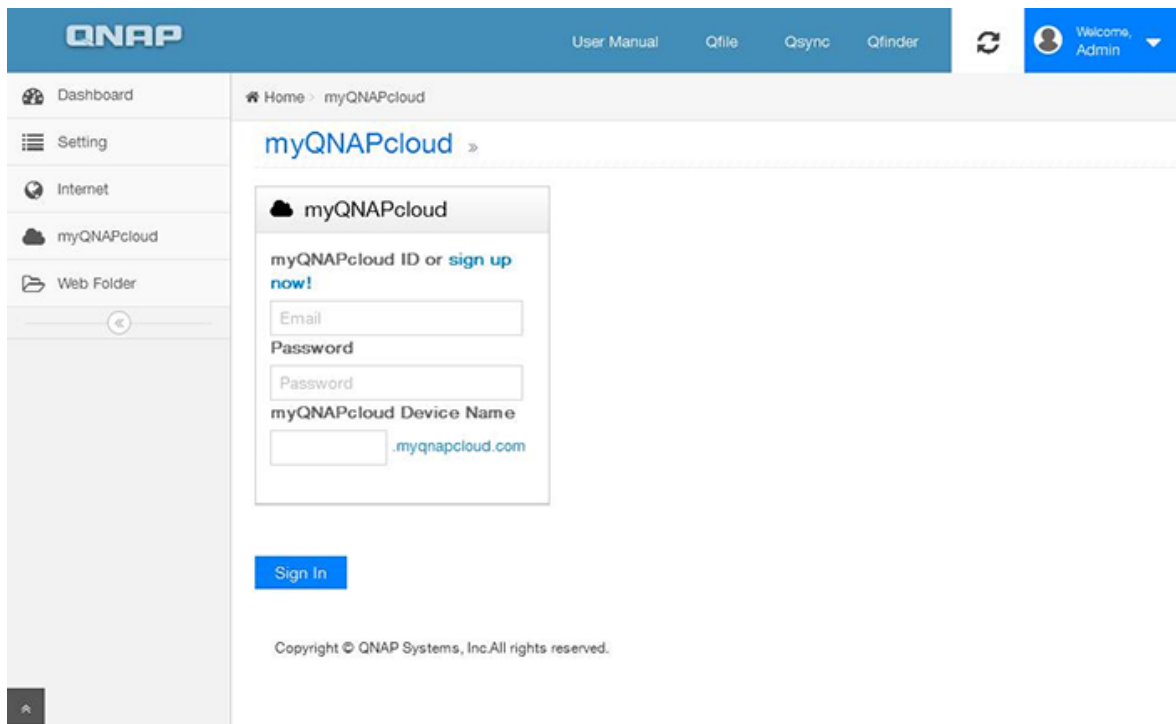


1.8 myQNAPcloud

(3.1.1+ QGenie)

myQNAPcloud UPnP , NAS IP myQNAPcloud QGenie , UPnP , QGenie .

myQNAPcloud QGenie가 UPnP myQNAPcloud , QGenie .




myQNAPcloud ID

myQNAPcloud ID가 , .
 [가 !] myQNAPcloud ID .

QGenie myQNAPcloud

myQNAPcloud ID, QGenie myQNAPcloud .

myQNAPcloud »

 myQNAPcloud

myQNAPcloud ID or [sign up now!](#)


Password

myQNAPcloud Device Name

 [.myqnapcloud.com](#)

Sign In


: ' UPNP . "Sign In()"

 myQNAPcloud

myQNAPcloud ID (QID)

myQNAPcloud Device Name

UPNP Test

Status : Signed In
Last Update Status :  OK

Sign Out Manage myQNAPcloud Account

QGenie7 | myQ [NAPcloud](#)

myQNAPcloud QGenie

"Sign Out()" QGenie가 myQNAPcloud

1.9

QGenie

1.9.1

1. QGenie 가
2. QGenie
 - , , ,
 -
 -
 - 가
 - 가
3. TV , QGenie TV
4. QGenie
 - QGenie
 - USB / QGenie QGenie 가 QGenie
 - 가
5. QGenie 가 QGenie가 QGenie
6. QGenie 가 QGenie QGenie
7. QGenie 2.4GHz 가 QGenie 가
8. QGenie 가 가
9. QGenie 2~3 QGenie USB /
10. QGenie ,
11. QGenie ,

. QGenie USB 1500mA

12. QGenie USB , QGenie가

1.9.2

QGenie

1.9.3

1. QGenie SD 가

2. QGenie QGenie 가

3. USB SD 가

4. QGenie SD 가

5. QGenie

6. FAT SD/SDHC 4GB

, exFAT NTFS SD/SDHC

1.10

CPU	MIPS 24KEc 600MHz
Dram	64MB
	16MB
SSD	32GB
WiFi	802.11n 1T1R 150Mbps
LAN	100Megabit RJ-45 1
OLED	
LED	,
USB	USB 3.0 1
SD	SDXC 1
	,
	WiFi / /
	115(H) x 58.5(W) x 17.5(D) mm

	122g
(W)	0.8w
	<ul style="list-style-type: none"> ▪ 0 °C ~ 45 °C(32 °F ~ 112 °F) () ▪ 0 °C ~ 45 °C(32 °F ~ 112 °F) ()

OS	<ul style="list-style-type: none"> ▪ Windows XP, Vista, Windows 7(32/64), Windows 8(32/64), Windows Server 2003/2008 R2/2012 ▪ Apple Mac OS X ▪ Linux & UNIX
	<ul style="list-style-type: none"> ▪ ADSL/VDSL(PPPoE) ▪ (DHCP) ▪ / LAN(DHCP) ▪ ()
	<ul style="list-style-type: none"> ▪ Microsoft Internet Explorer 10+ ▪ Mozilla Firefox 8+ ▪ Apple Safari 4+ ▪ Google Chrome

/	<ul style="list-style-type: none"> ▪ Qfile(iOS/Android) ▪ Qsync(Windows) ▪ Qfinder(Windows)
	<ul style="list-style-type: none"> ▪ / ▪
(**)	<ul style="list-style-type: none"> ▪ : JPG, GIF, PNG, TIFF, BMP ▪ : DOC, DOCX, PPT, PPTX, XLS, XLSX, KEY, NUMBERS, PAGES, TXT, RTF, PDF ▪ : MP3, AAC, M4A, AIF, WAV, WMA, OGG, APE, FLAC ▪ : WMV, AVI, MKV, RM, RMVB, XVID, MP4, MOV, 3GP, MPG, M4V <p>(**)</p> <p>. QGenie Qfile</p> <p>/ .</p>
	<p>FAT32, NTFS, exFAT, HFS+, ext2, ext3, ext4(2TB)</p>

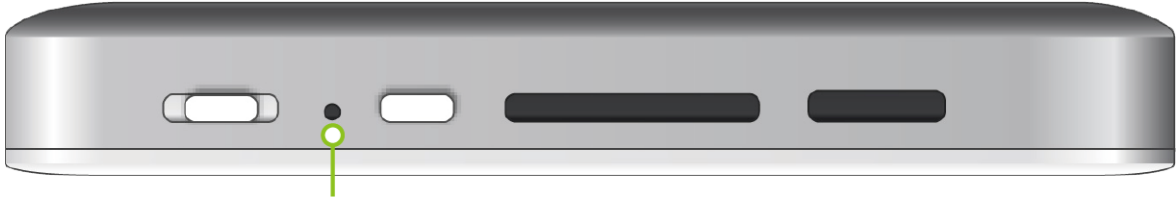
	<ul style="list-style-type: none"> ▪ Qfile API ▪ WebDAV ▪ (CIFS/Samba) ▪ UPnP ▪ Bonjour
USB	<ul style="list-style-type: none"> ▪ iPhone (iOS 6, iOS7) ▪ Android (4.0/4.1/4.2/4.3/4.4) ▪ 4G/3G/LTE USB
	/
	<ul style="list-style-type: none"> ▪ ▪ ▪

1.11

가 가 , QGenie

QGenie

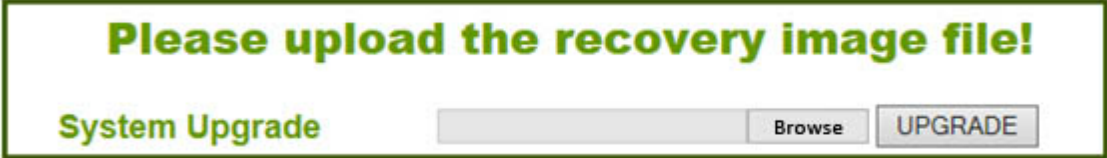
- 1.
2. QGenie PC
3. PC IP 192.168.60.2 , 255.255.255.0 , 192.168.60.1
4. QGenie <http://192.168.60.1/>



Hold reset and move slide to Wi-Fi sharing mode



5. "Browse()", , "UPGRADE()"



6. QGenie가 . QGenie PC

7. , _____ QGenie



2.

2.1

QGenie가 _____ .

_____ .

QGenie _____ 가 _____ .

_____ 가 _____ .

_____ .

QGenie가

2.1.1 QGenie가

- QGenie 가 . PC USB AC

2.1.2

-
- 가
- 가
-
-
-)
- 가 5 °C 가 가

2.1.3 QGenie 가

- QGenie
-
- QGenie
- , 가 5 °C (41 °F) 가

2.1.4 가

- USB , QGenie가
- PC가 QGenie
- QGenie 가 USB
- 가 QGenie

2.1.5

- USB
- 가 10 °C ~ 35 °C (50 °F - 95 °F)
- USB AC 가
- , OLED

2.1.6

-
- QGenie USB

2.1.7 QGenie가

-
- QGenie 가
-
- QGenie USB 1500mA
- USB , QGenie가

2.2

가

2.2.1

가

-
-

2.3

가

가

LAN

2.3.1

가

- USB USB USB
- USB AC USB 가
- 가
- 가

2.3.2

- USB
-
- 가 10°C ~ 30 (50°F - 86°F)
- USB AC 가 USB AC
- 가 가

2.3.3

가

- (:) USB AC , PC

2.3.4

- 가
- PC USB AC

2.3.5

LAN

- LAN

2.4

가

2.4.1 QGenie가

- USB
- QGenie
- QGenie 60% QGenie
- 가 가
- QGenie USB 1.5A 가 1.5A
-
-

2.5

LAN

LAN

가 /

(SSID)

"QG"

LAN

LAN

LAN

2.5.1 LAN , 가 /

- QGenie , LAN
- (2.4GHz , , QGenie)
QGenie
가 , QGenie
- *
QGenie
- QGenie가 LAN 가
- QGenie 가 (20)
- QGenie , (*)
- USB QGenie LAN
- QGenie USB AC SD LAN
USB

* QGenie ,

2.5.2 (SSID) "QG"

- QGenie OLED

2.5.3 LAN

- QGenie가 USB USB
- LAN USB 가 LAN
가 LAN USB 가
- QGenie ,

2.6

2.6.1

- 가 ,
QGenie LAN
- (2.4GHz , , QGenie)
QGenie
가 , QGenie
- *
QGenie가 LAN 가
- QGenie SSID

- QGenie WPA-Enterprise WPA2-Enterprise

- LAN ID

*QGenie

2.7

 (SSID)
 _____?
 _____?

2.7.1 (SSID)

?

- SSID 6
- 가 가 가

2.7.2 QGenie ?

- 20 QGenie

2.8

 /

2.8.1 /

 "Qfile" ?
 "Qfile"
 _____ (iOS).

2.8.1.1

- SD /USB 가 QGenie
- LAN , QGenie LAN
- Qfile , QGenie
- Android 가 QGenie USB
- DRM(Digital Rights Management)

2.8.1.2

- (2.4GHz , , QGenie)
 . QGenie

2.8.1.3 Qfile

?

- ["Specifications\(\)" -> "Software\(\)" -> "Multimedia Formats\(\)"](#)

2.8.1.4 Qfile

- Qfile

2.8.1.5

(iOS) .

- "Settings()" – "Privacy()" – "Photos()" , Qfile
 가
- iOS 5 "Settings()" – "Location Services()" .

2.8.2

(SD , USB ,)

(SD , USB ,)

2.8.2.1

- (2.4GHz , , QGenie)
 . QGenie

2.8.2.2

(SD , USB ,)

- 가 가
-
- Android 4.4 , SD
- iOS
 iOS 5: - Location() , Qfile
 iOS 6 (): - Privacy() - Qfile 가

2.8.2.3

(SD , USB ,)

-
- 가 가

- Android 4.4 , SD
- iOS Qfile

2.9 USB

QGenie USB

_____.

_____.

LAN PC

2.9.1 QGenie USB

- USB , USB
- USB

2.9.2

- QGenie USB 가
-

2.9.3 LAN PC

- USB QGenie USB
- LAN USB , LAN USB 가 , 가

2.10 Qfile

Qfile

Qfile ?

Qfile

"Qfile" ?

Qfile QGenie

2.10.1 Qfile

- 가

2.10.2 Qfile ?

- "Specifications()" -> "Software()" -> "Multimedia Formats()"

2.10.3 Qfile

- Qfile

2.10.4 Qfile

- Qfile

?

(i) ’



2.10.5 Qfile

QGenie

1. QGenie가
2. "Setting()"

2.11 myQNAPcloud

QGenie myQNAPcloud

2.11.1 QGenie myQNAPcloud

1. QGenie가
2. myQNAPcloud ID 가

- 3. 가
 - 4. 가 UPNP
- 2.12 가**

QGenie

QGenie LAN

2.12.1

- [?](#)
3 (QGenie가 Wi-Fi).

2.12.2 QGenie LAN

LAN ?

2.12.2.1 ?

- , QGenie . QNAP

2.12.2.2 QGenie ?

- WEP, WPA WPA2 , WPA2

2.12.2.3

- ["How do I use the Reset Switch? \(?\)"](#)
-

2.13

QGenie가

2.13.1 QGenie

- 가
- QNAP
- QGenie Qfile

2.13.2 QGenie가

- QGenie 60% (QGenie).
- 가
- SD USB
- USB
- USB AC
-
-
-
- QGenie , _____

2.14 USB

USB QGenie

2.14.1 USB QGenie

- USB 가 ,
- QGenie USB
- iOS

3.

QGenie 가

1. &

2. QGenie

3. QNAP _____

4. QNAP

5. QNAP _____

6.

QNAP

QNAP _____ 가

&

: 07:00~18:00(), ~
: +1-909-595-2782

가 909-595-2782

()

09:30~18:30 ~ : +886-2-2641 2000 6

09:30~18:30 ~ : +86-10-62682131

09:00~17:00 ~ : +49-89-381562991

08:30~17:30 ~ : +31(0)107600830

08:30~16:30 ~ : +44(0)2036-081-969

9:00-18:00() : +7 (495) 587 76 20

4. GNU

GNU

3, 2007 6 29

Copyright © 2007 Free Software Foundation, Inc. <<http://fsf.org/>>

GNU

GNU

. Free Software

Foundation
가

GNU

가 . 가
"License only()"

가 , 가
가 ,
가

10

. 2

3. 'Anti-Circumvention Law()

가 1996 12 20 WPI 11

가 가 , 가
가 , 3

4.

가 , 7
가 ,
가 가 ,

5.

4 ,

a) 가 가

b) 7 가
가 4 "keep intact all notices(
)"

c) 가 7 가
가

가
d)) , 가 , Appropriate Legal Notices()
) , 가 , Appropriate Legal Notices()
가 , 가
, 가
가 "aggregate()" .
가

6. 4 5 가 가 가
, 가

a)
, ()
b) (1) 가 ,
(2) 가
3 ()

c) , 가 6b

d) () , 가
가) , (3
가) ,
가
e) P2P 가 가 6d
가 가
가 가

"User product()" (1) , 가 가
"consumer product()" , (2)
가 , "normally used()"
가

"Installation Information()" 가

가
, 가 (가)
가 . 3 가
(: ROM)
가 ,
가 ,
(
) ,

7. 가 .
"Additional permissions(가)"

가 가 가
가 , 가
가
가 ,
가 . (가 가
) 가 가
가 가
, 가 가 가
(가 가
) .

a) 15 16

b)
Appropriate Legal Notices()

c) ,

d)

e) ,

f) 가 () ,
가 () ,

가 가 10 "further restrictions()"
가 가 가
가 , 가 가
, 가 가
가 가
가 가
가 가
가 가

가 가
가 가
8. 가 (11)

가 가 (a) 가 (b) 60
가 30 가 가
10 가 가

9. 가 P2P 가 가 가

10. 가 가 가 3 가

"entity transaction()"
가 가 가 가 가 가
가 가 가 가 가 가
(-)

11.

"contributor()"

"contributor version()"

"essential patent claims()"

가
"control()"

2 가

,"patent license()"

(가 " ")

가 가 가
가가 가 (1) 가

(2)
(3)

"Knowingly relying()" 가

가 가 가
가 가 가

가 가 가
가 가 가

"discriminatory()"

가 3 가 (a) 3 가
() (b) 가 가

3
, 2007 3 28 가 가

가

12.

가 , 가 가 가 가 가 가 가 가

13. GNU Affero

가 , GNU Affero 3
가 가 가
GNU Affero
, 13

14. Free Software Foundation

GNU Affero /
later version(가)" GNU "or any 가
가 Free Software Foundation 가
가 Free Software Foundation GNU
GNU 가
가 가 가

15.

, /
"AS IS()"
가 ,

16.

/ (3)
가 가

17. 15 16

가

가

가 가

,
가

.