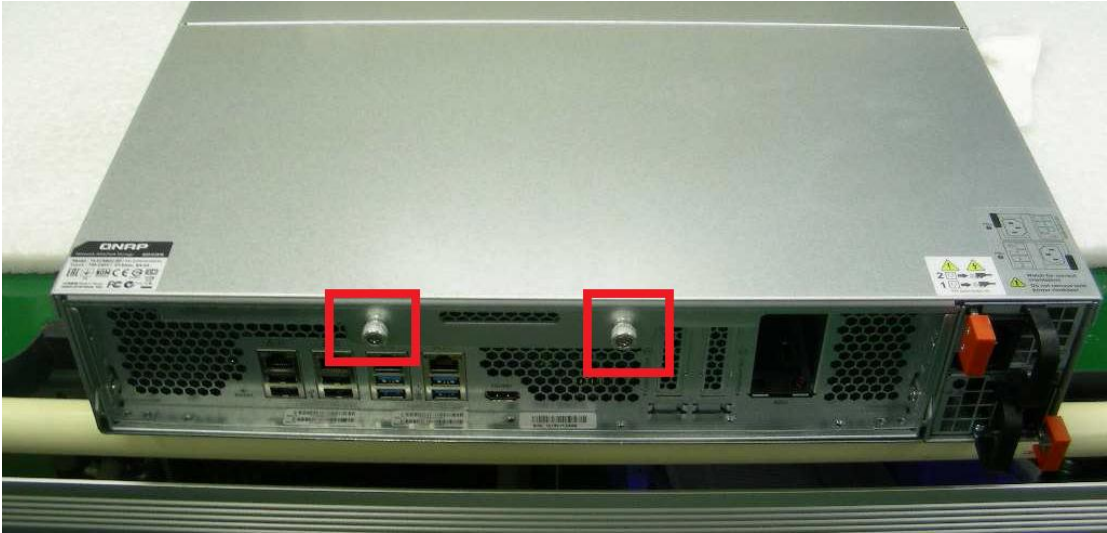


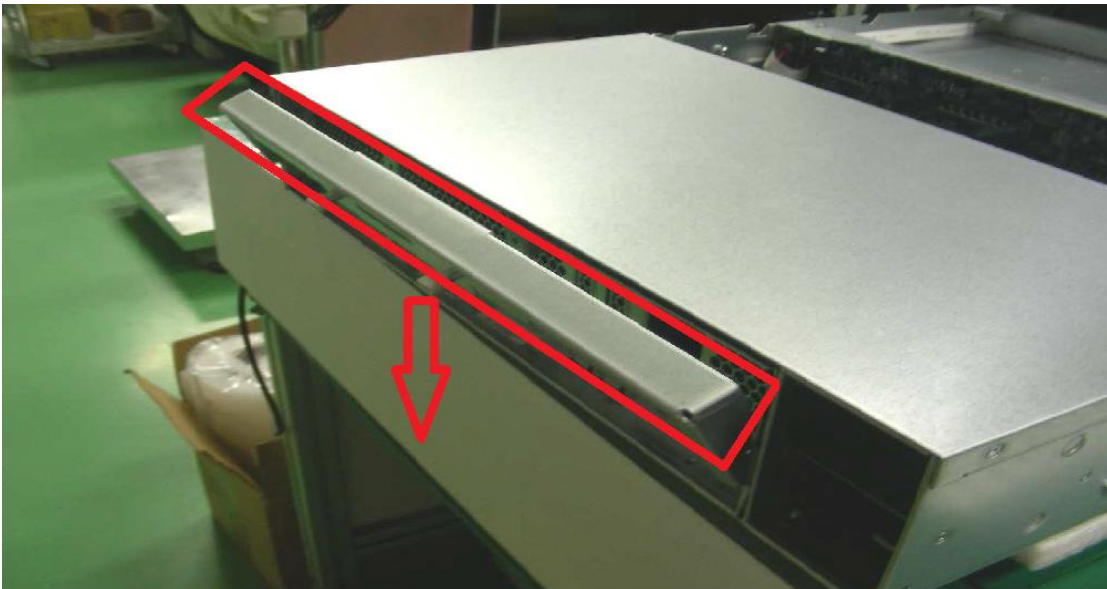
TVS-EC1280U-SAS-RP Disassembly SOP

Mainboard :

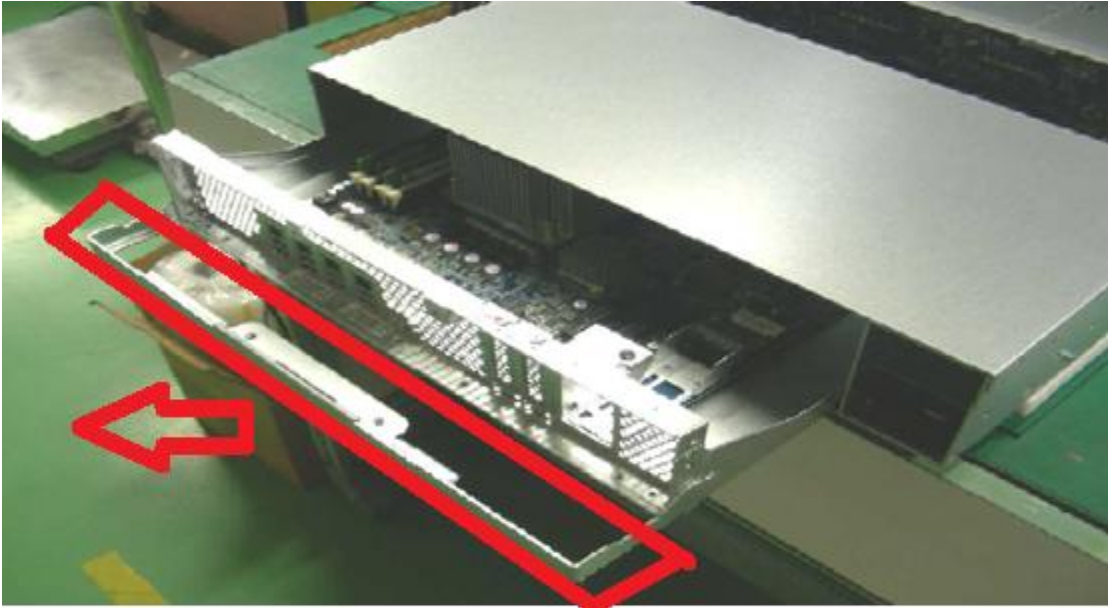
1. Loosen both screws



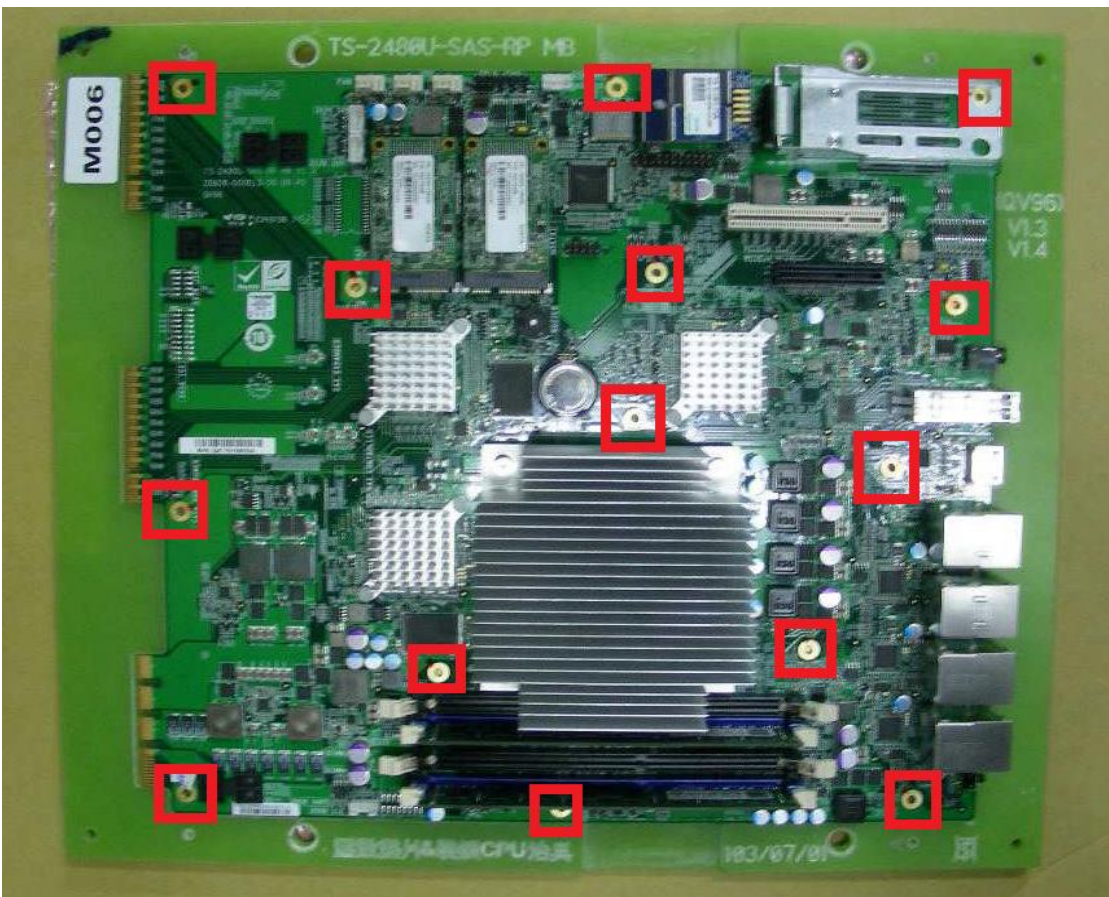
2. Pull down the handle



3. Extract the mainboard tray

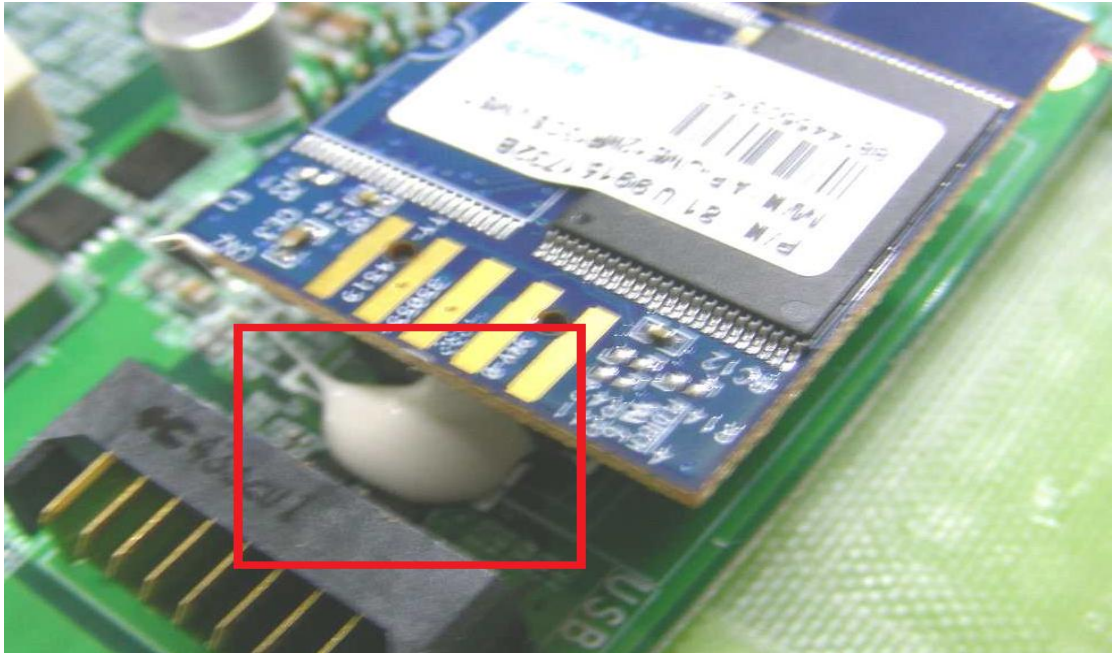


4. Loosen all screws on mainboard

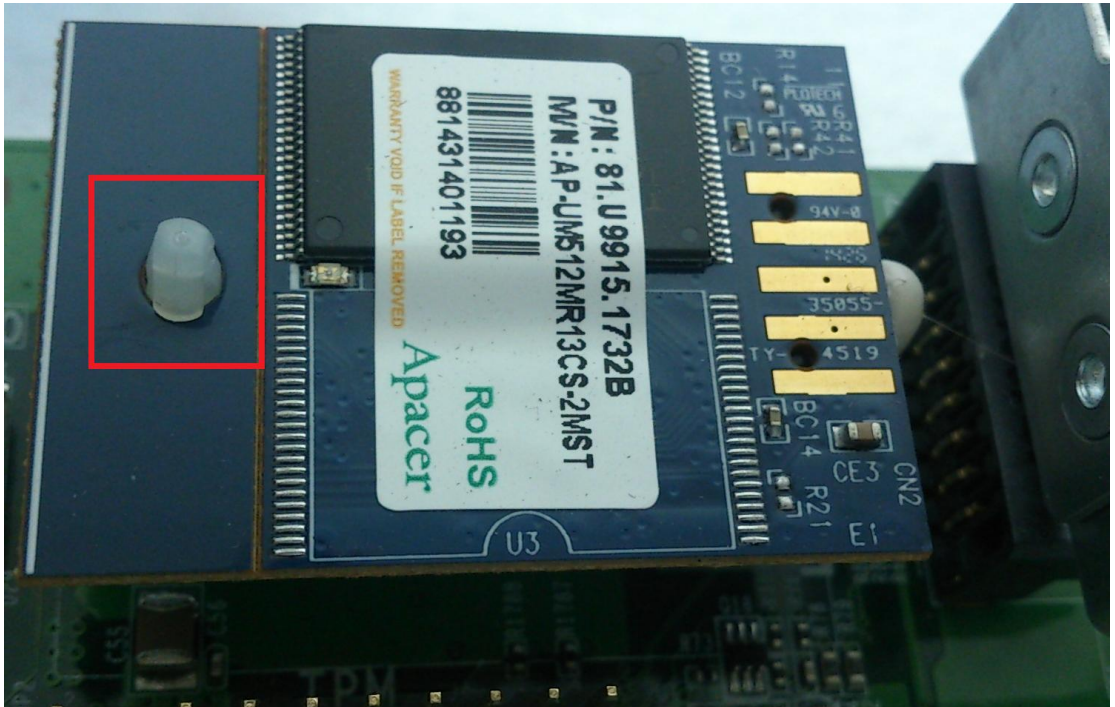


DOM :

1. There is glue fastening the DOM connector and mainboard. It has to be removed with long nose pliers before separating the DOM from mainboard.

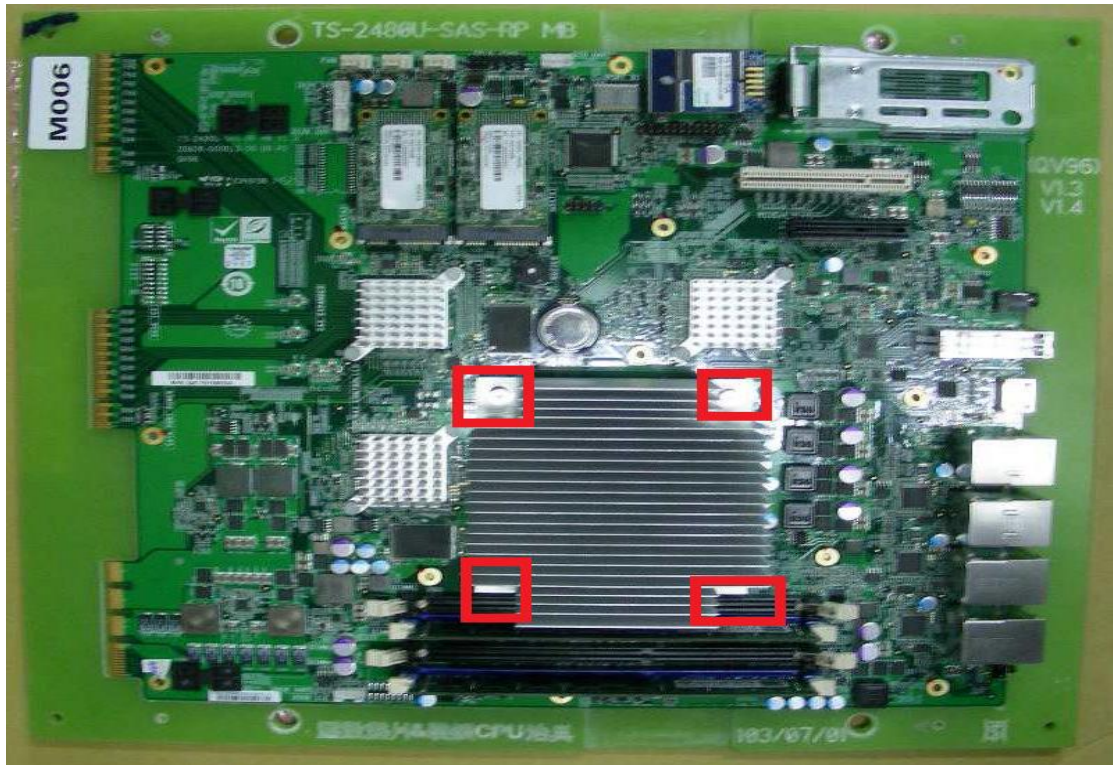


2. Remove DOM



CPU :

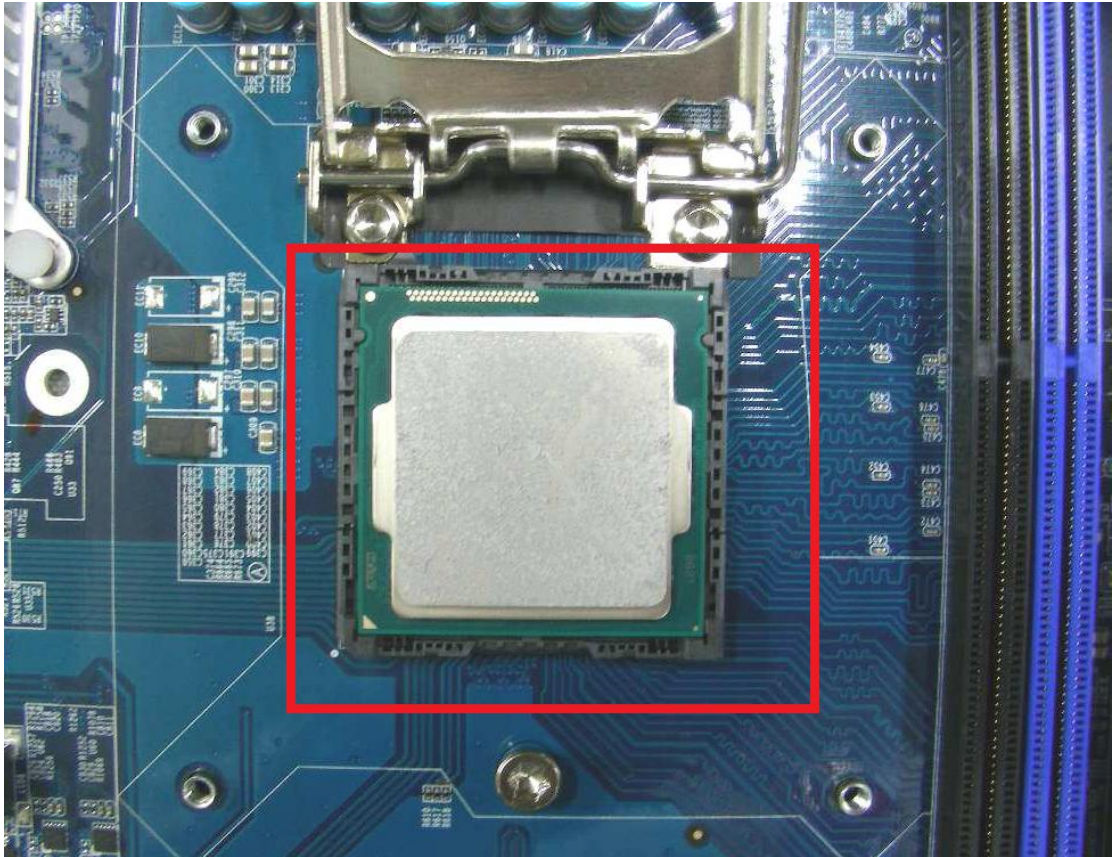
1. Loosen 4 screws



2. Pull the handle

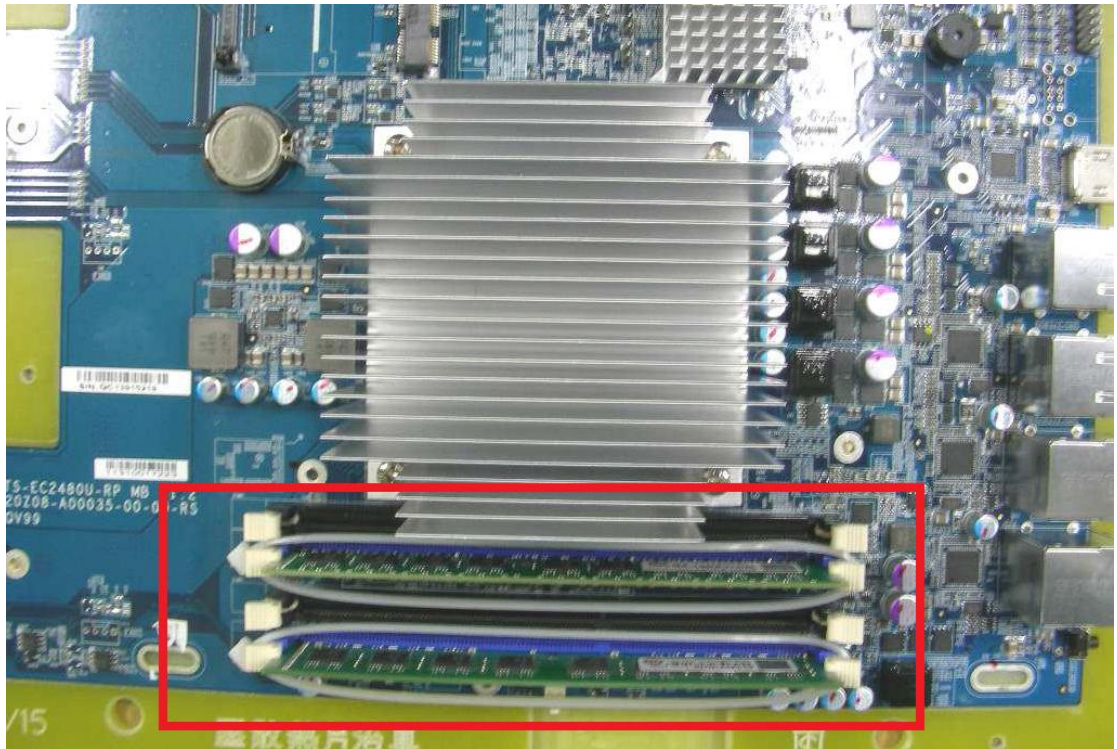


3. Remove CPU



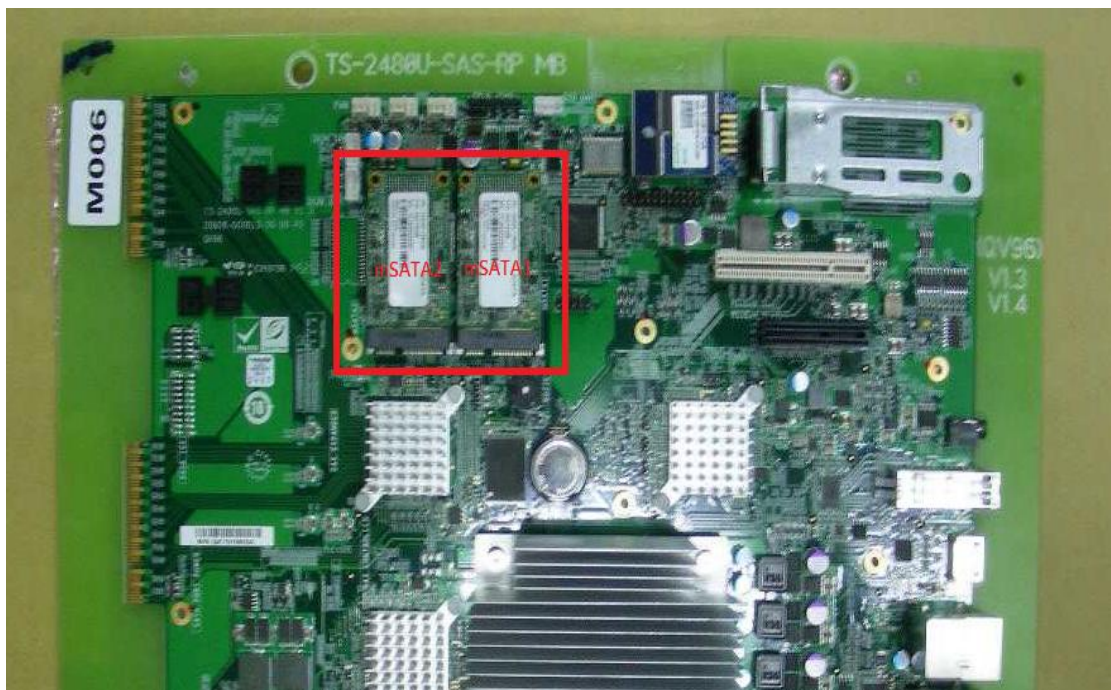
RAM :

1. Remove RAM



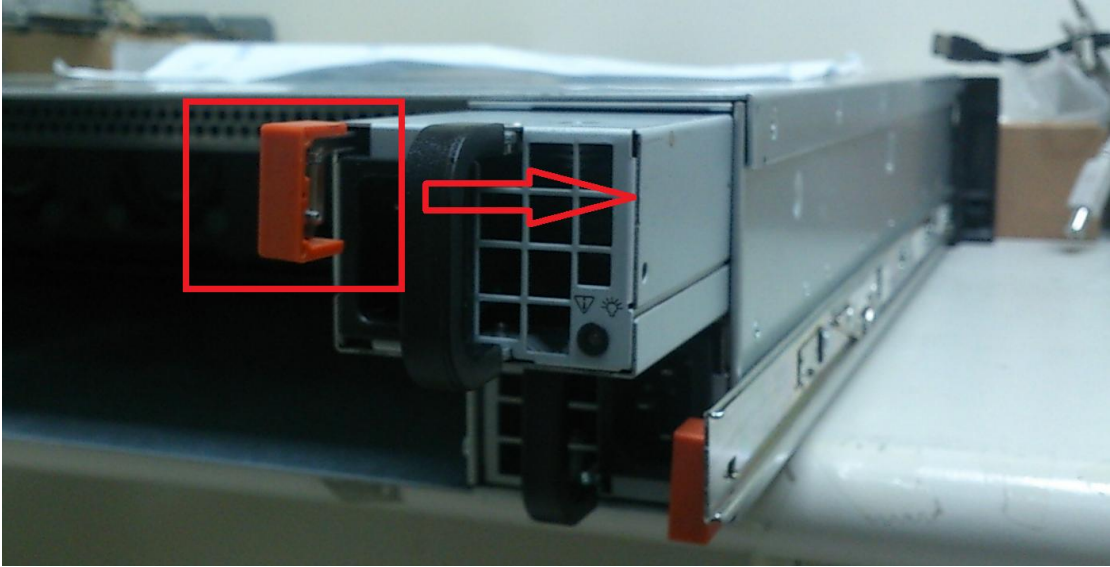
mSATA :

- Remove 2 mSATA



Power :

1. Push the switch and extract the power supply

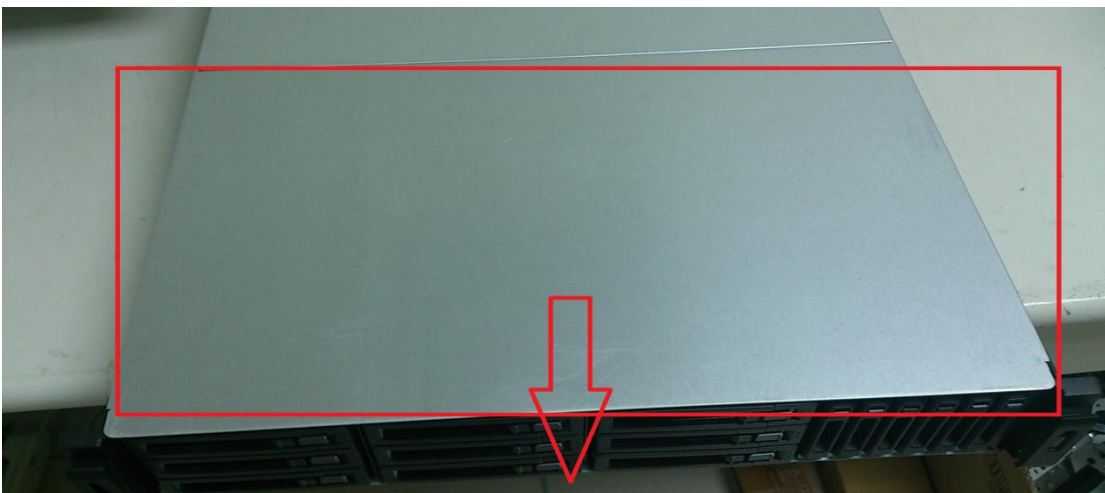


Fan :

1. Loosen both sides screw



2. Push the cover and open it

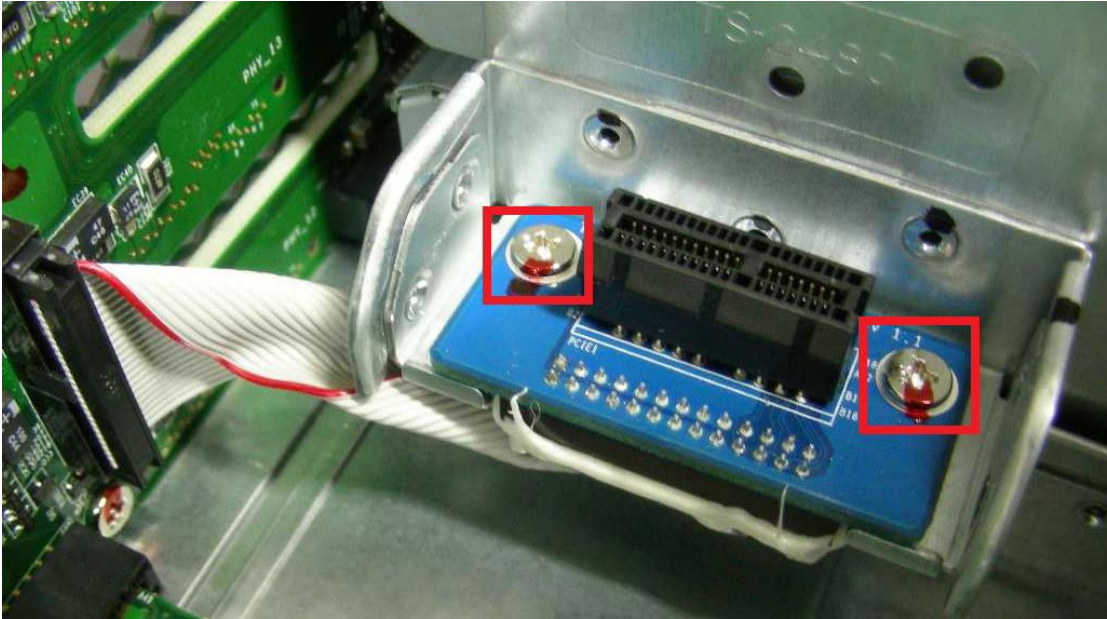


3. Extract fan module

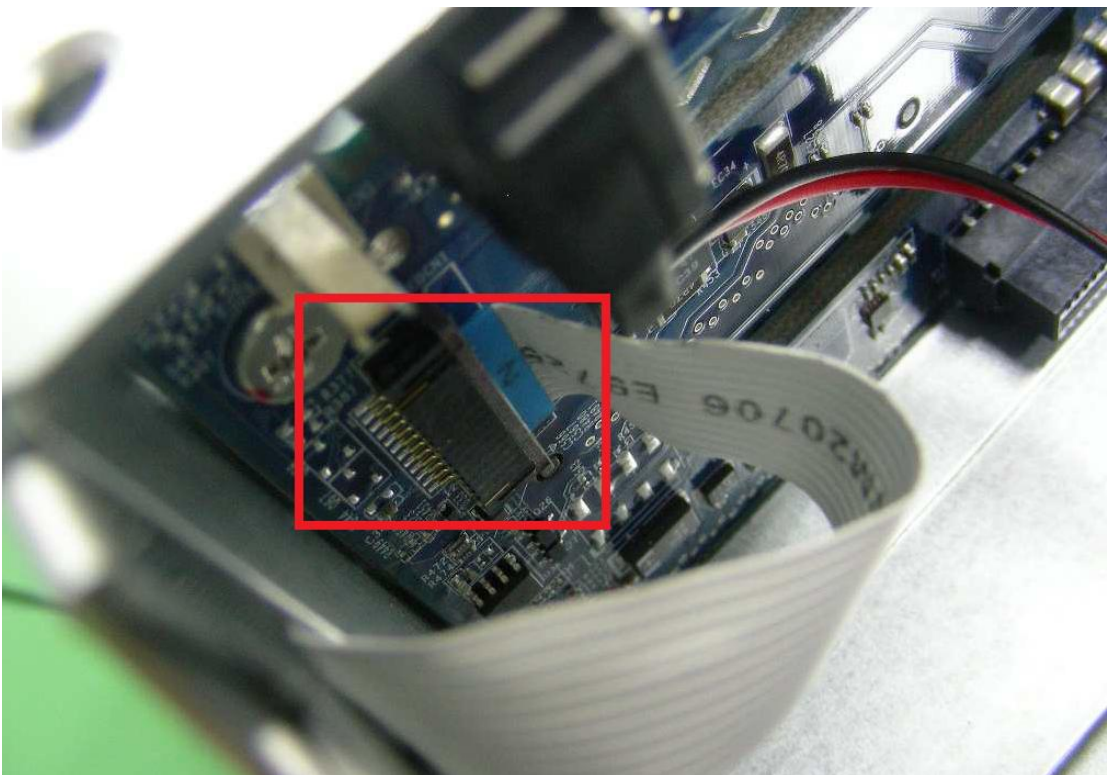


Backplane :

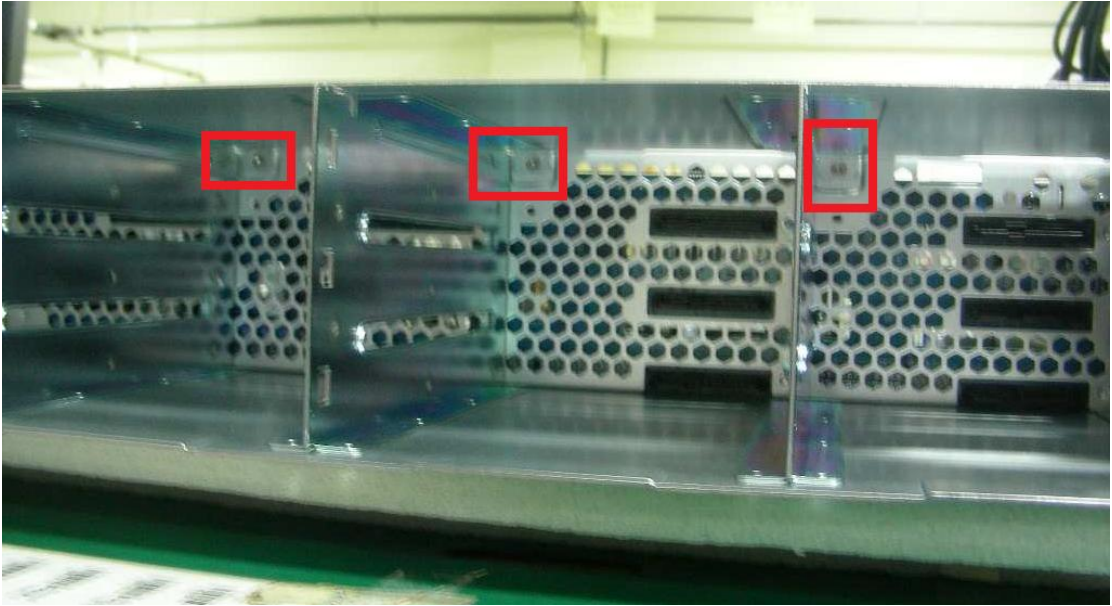
1. Remove HDD tray, power modules, fan module, mainboard tray
2. Loosen fan connector screws



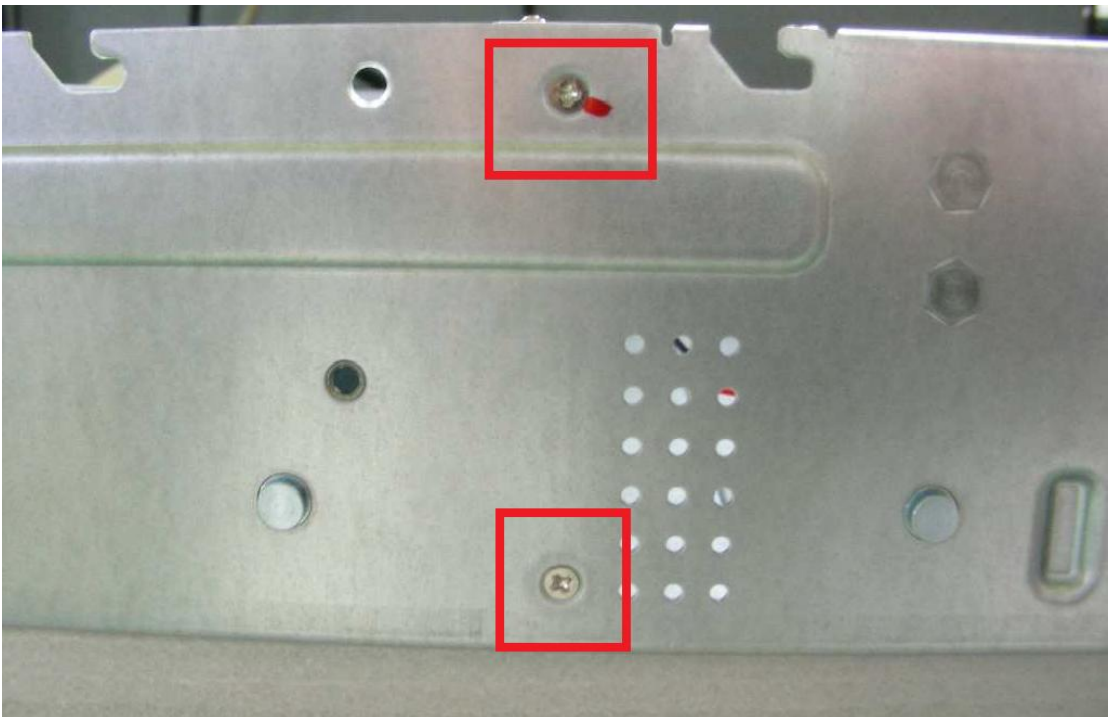
3. Remove the cable



4. Loosen three screws



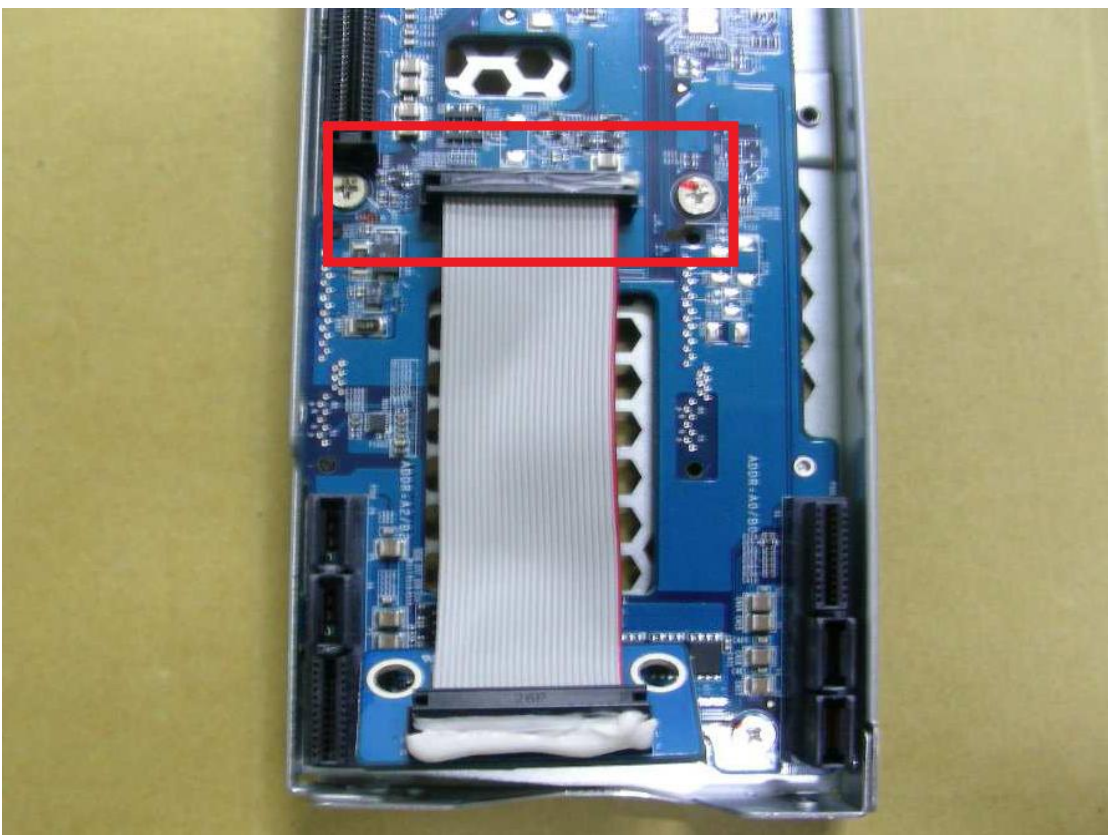
5. Loosen both sides screws



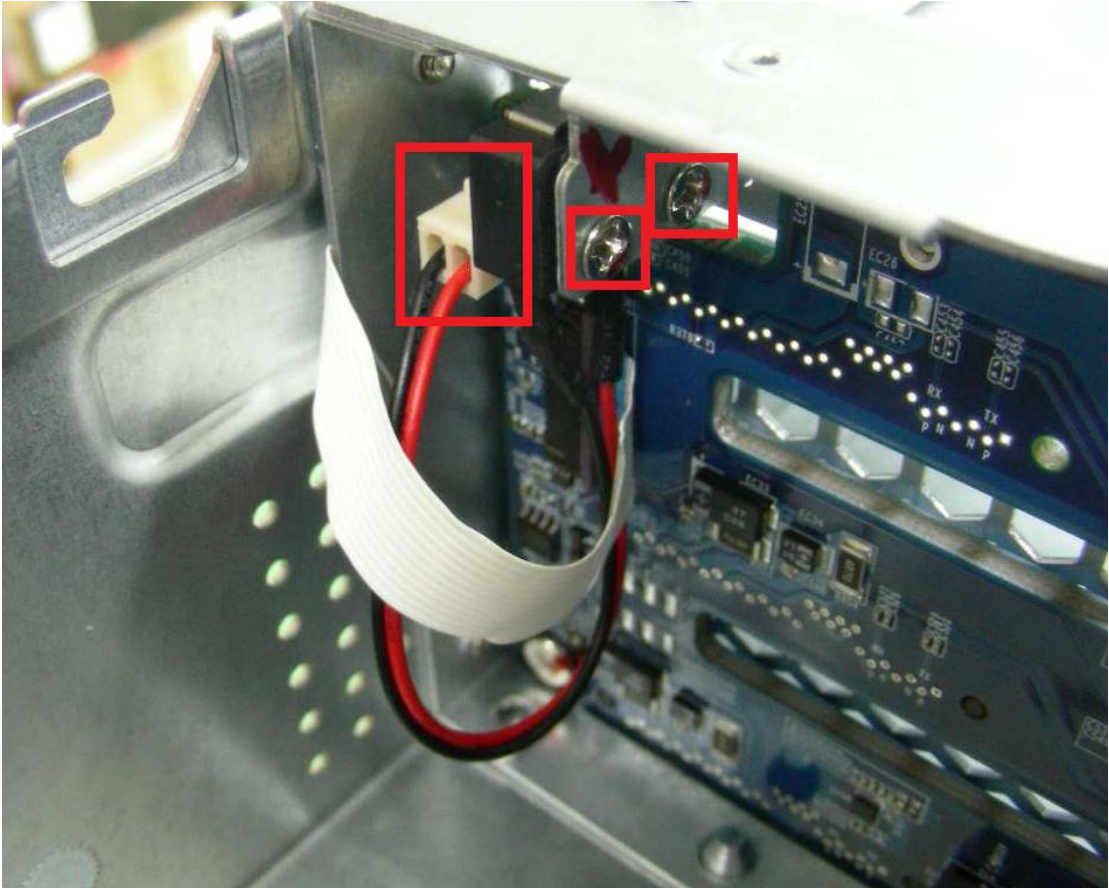
6. Extract the backplane



7. Remove fan module connector



8. Loosen switch screws and remove switch connector



9. Loosen all screws on backplane

